

Hsp60 Antibody
Purified Rabbit Polyclonal Antibody (Pab)
Catalog # AP22115a**Specification**

Hsp60 Antibody - Product Information

Application	IF, WB, IHC-P,E
Primary Accession	P10809
Other Accession	P31081 , Q5NVM5
Reactivity	Human, Mouse
Predicted	Bovine
Host	Rabbit
Clonality	polyclonal
Isotype	Rabbit IgG
Calculated MW	61055

Hsp60 Antibody - Additional Information**Gene ID** 3329**Other Names**

60 kDa heat shock protein, mitochondrial, 60 kDa chaperonin, Chaperonin 60, CPN60, Heat shock protein 60, HSP-60, Hsp60, HuCHA60, Mitochondrial matrix protein P1, P60 lymphocyte protein, HSPD1, HSP60

Target/Specificity

This Hsp60 antibody is generated from a rabbit immunized with a KLH conjugated synthetic peptide between 340-374 amino acids from the human region of human Hsp60.

Dilution

IF~~1:25
WB~~1:2000
IHC-P~~1:25

Format

Purified polyclonal antibody supplied in PBS with 0.09% (W/V) sodium azide. This antibody is purified through a protein A column, followed by peptide affinity purification.

Storage

Maintain refrigerated at 2-8°C for up to 2 weeks. For long term storage store at -20°C in small aliquots to prevent freeze-thaw cycles.

Precautions

Hsp60 Antibody is for research use only and not for use in diagnostic or therapeutic procedures.

Hsp60 Antibody - Protein Information**Name** HSPD1

Synonyms HSP60

Function Chaperonin implicated in mitochondrial protein import and macromolecular assembly. Together with Hsp10, facilitates the correct folding of imported proteins. May also prevent misfolding and promote the refolding and proper assembly of unfolded polypeptides generated under stress conditions in the mitochondrial matrix (PubMed:[11422376](#), PubMed:[1346131](#)). The functional units of these chaperonins consist of heptameric rings of the large subunit Hsp60, which function as a back- to-back double ring. In a cyclic reaction, Hsp60 ring complexes bind one unfolded substrate protein per ring, followed by the binding of ATP and association with 2 heptameric rings of the co-chaperonin Hsp10. This leads to sequestration of the substrate protein in the inner cavity of Hsp60 where, for a certain period of time, it can fold undisturbed by other cell components. Synchronous hydrolysis of ATP in all Hsp60 subunits results in the dissociation of the chaperonin rings and the release of ADP and the folded substrate protein (Probable).

Cellular Location

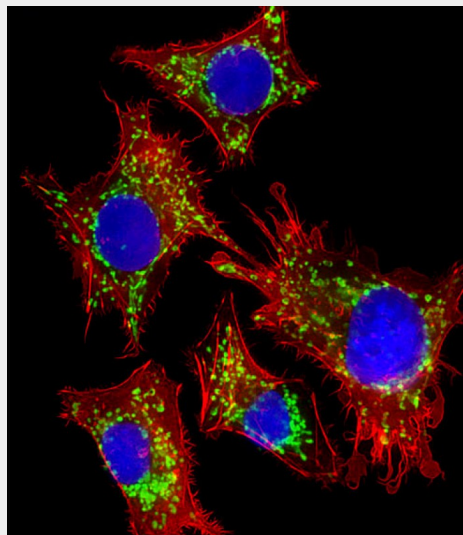
Mitochondrion matrix.

Hsp60 Antibody - Protocols

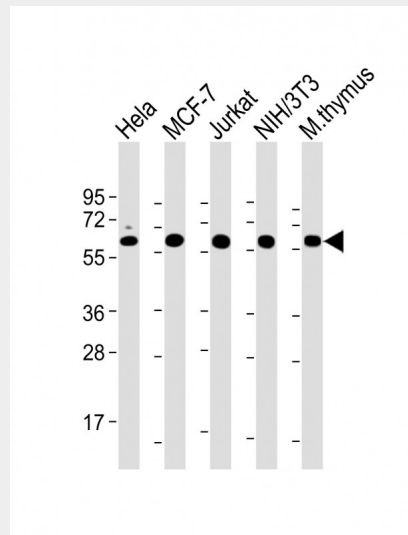
Provided below are standard protocols that you may find useful for product applications.

- [Western Blot](#)
- [Blocking Peptides](#)
- [Dot Blot](#)
- [Immunohistochemistry](#)
- [Immunofluorescence](#)
- [Immunoprecipitation](#)
- [Flow Cytometry](#)
- [Cell Culture](#)

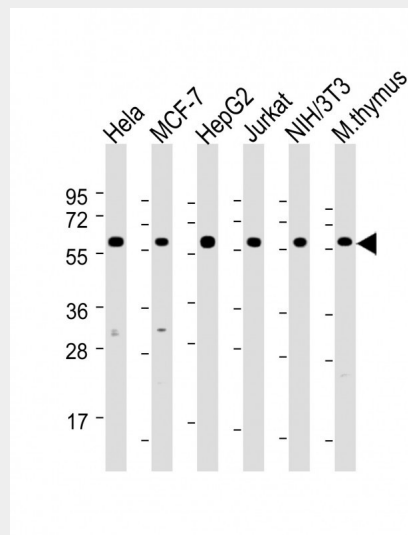
Hsp60 Antibody - Images



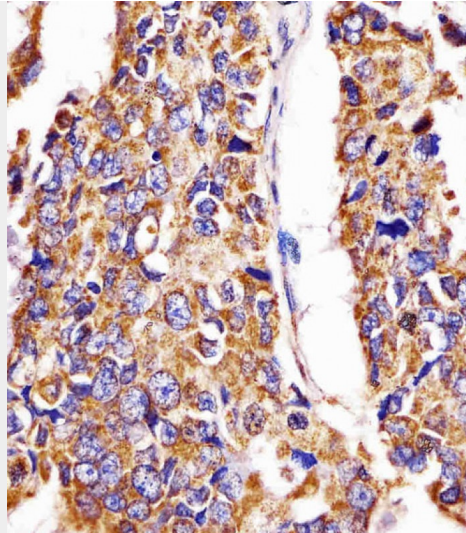
Immunofluorescent analysis of 4% paraformaldehyde-fixed, 0.1% Triton X-100 permeabilized HepG2 (human liver hepatocellular carcinoma cell line) cells labeling Hsp60 with AP22115a at 1/25 dilution, followed by Dylight® 488-conjugated goat anti-rabbit IgG (NK179883) secondary antibody at 1/200 dilution (green). Immunofluorescence image showing cytoplasm staining on HepG2 cell line. The nuclear counter stain is DAPI (blue).



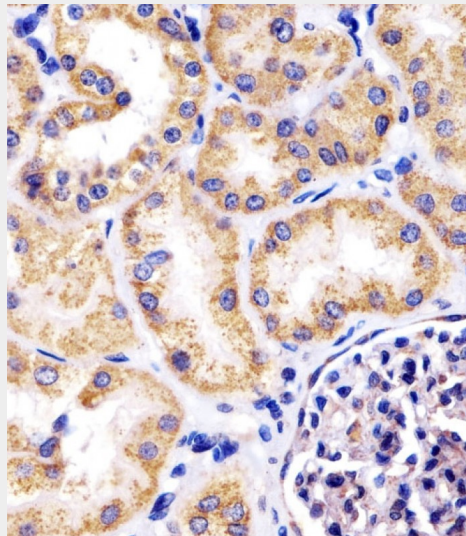
All lanes : Anti-Hsp60 Antibody at 1:2000 dilution Lane 1: HeLa whole cell lysate Lane 2: MCF-7 whole cell lysate Lane 3: Jurkat whole cell lysate Lane 4: NIH/3T3 whole cell lysate Lane 5: mouse thymus lysate Lysates/proteins at 20 μ g per lane. Secondary Goat Anti-Rabbit IgG, (H+L), Peroxidase conjugated at 1/10000 dilution. Predicted band size : 61 kDa Blocking/Dilution buffer: 5% NFDM/TBST.



All lanes : Anti-Hsp60 Antibody at 1:2000 dilution Lane 1: HeLa whole cell lysate Lane 2: MCF-7 whole cell lysate Lane 3: HepG2 whole cell lysate Lane 4: Jurkat whole cell lysate Lane 5: NIH/3T3 whole cell lysate Lane 6: mouse thymus lysate Lysates/proteins at 20 μ g per lane. Secondary Goat Anti-Rabbit IgG, (H+L), Peroxidase conjugated at 1/10000 dilution. Predicted band size : 61 kDa Blocking/Dilution buffer: 5% NFDM/TBST.



AP22115a staining Hsp60 in human lung adenocarcinoma tissue sections by Immunohistochemistry (IHC-P - paraformaldehyde-fixed, paraffin-embedded sections). Tissue was fixed with formaldehyde and blocked with 3% BSA for 0.5 hour at room temperature; antigen retrieval was by heat mediation with a citrate buffer (pH6). Samples were incubated with primary antibody (1/25) for 1 hour at 37°C. A undiluted biotinylated goat polyvalent antibody was used as the secondary antibody.



AP22115a staining Hsp60 in human kidney tissue sections by Immunohistochemistry (IHC-P - paraformaldehyde-fixed, paraffin-embedded sections). Tissue was fixed with formaldehyde and blocked with 3% BSA for 0.5 hour at room temperature; antigen retrieval was by heat mediation with a citrate buffer (pH6). Samples were incubated with primary antibody (1/25) for 1 hour at 37°C. A undiluted biotinylated goat polyvalent antibody was used as the secondary antibody.

Hsp60 Antibody - Background

Implicated in mitochondrial protein import and macromolecular assembly. May facilitate the correct folding of imported proteins. May also prevent misfolding and promote the refolding and proper assembly of unfolded polypeptides generated under stress conditions in the mitochondrial matrix.

Hsp60 Antibody - References

Jindal S., et al. Mol. Cell. Biol. 9:2279-2283(1989).
Venner T.J., et al. DNA Cell Biol. 9:545-552(1990).
Hansen J.J., et al. Hum. Genet. 112:71-77(2003).
Tan J., et al. Submitted (SEP-2005) to the EMBL/GenBank/DDBJ databases.
Ota T., et al. Nat. Genet. 36:40-45(2004).