

**Cyclophilin B Antibody**  
**Purified Rabbit Polyclonal Antibody (Pab)**  
**Catalog # AP22114a**

**Specification**

---

**Cyclophilin B Antibody - Product Information**

Application	WB, IHC-P, FC,E
Primary Accession	<a href="#">P23284</a>
Other Accession	<a href="#">P24369</a>
Reactivity	Human, Mouse, Rat
Predicted	Mouse
Host	Rabbit
Clonality	polyclonal
Isotype	Rabbit IgG
Calculated MW	23743

**Cyclophilin B Antibody - Additional Information**

**Gene ID** 5479

**Other Names**

Peptidyl-prolyl cis-trans isomerase B, PPIase B, 5.2.1.8, CYP-S1, Cyclophilin B, Rotamase B, S-cyclophilin, SCYLP, PPIB, CYPB

**Target/Specificity**

This Cyclophilin B antibody is generated from a rabbit immunized with a KLH conjugated synthetic peptide between 161-195 amino acids from the human region of human Cyclophilin B.

**Dilution**

WB~~1:2000  
IHC-P~~1:25  
FC~~1:25

**Format**

Purified polyclonal antibody supplied in PBS with 0.09% (W/V) sodium azide. This antibody is purified through a protein A column, followed by peptide affinity purification.

**Storage**

Maintain refrigerated at 2-8°C for up to 2 weeks. For long term storage store at -20°C in small aliquots to prevent freeze-thaw cycles.

**Precautions**

Cyclophilin B Antibody is for research use only and not for use in diagnostic or therapeutic procedures.

**Cyclophilin B Antibody - Protein Information**

**Name** PPIB

## Synonyms CYPB

**Function** PPIase that catalyzes the cis-trans isomerization of proline imidic peptide bonds in oligopeptides and may therefore assist protein folding.

## Cellular Location

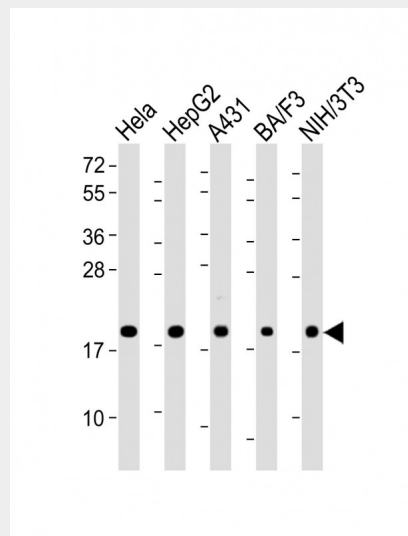
Virion. Note=(Microbial infection)

## Cyclophilin B Antibody - Protocols

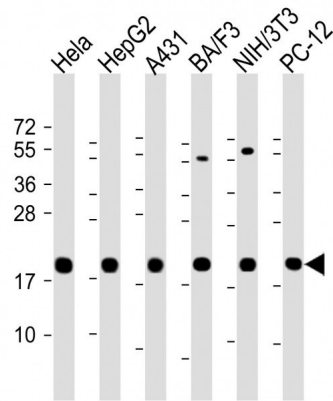
Provided below are standard protocols that you may find useful for product applications.

- [Western Blot](#)
- [Blocking Peptides](#)
- [Dot Blot](#)
- [Immunohistochemistry](#)
- [Immunofluorescence](#)
- [Immunoprecipitation](#)
- [Flow Cytometry](#)
- [Cell Culture](#)

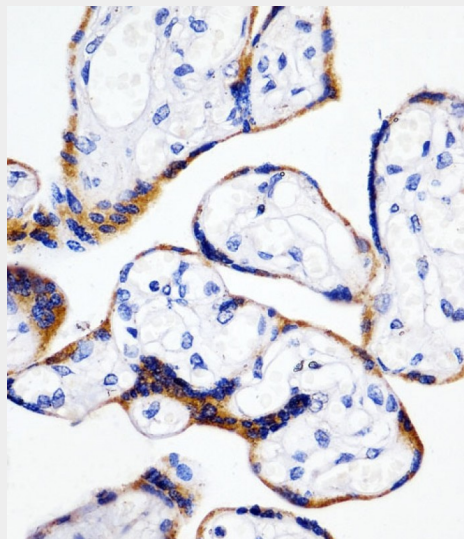
## Cyclophilin B Antibody - Images



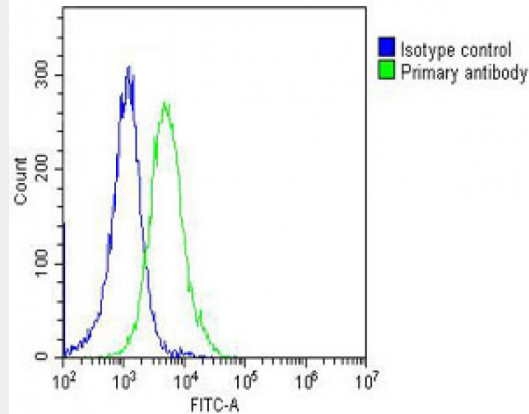
All lanes : Anti-Cyclophilin B Antibody at 1:2000 dilution Lane 1: HeLa whole cell lysate Lane 2: HepG2 whole cell lysate Lane 3: A431 whole cell lysate Lane 4: BA/F3 whole cell lysate Lane 5: NIH/3T3 whole cell lysate Lysates/proteins at 20  $\mu$ g per lane. Secondary Goat Anti-Rabbit IgG, (H+L), Peroxidase conjugated at 1/10000 dilution. Predicted band size : 24 kDa Blocking/Dilution buffer: 5% NFDM/TBST.



All lanes : Anti-Cyclophilin B Antibody at 1:2000 dilution Lane 1: HeLa whole cell lysate Lane 2: HepG2 whole cell lysate Lane 3: A431 whole cell lysate Lane 4: BA/F3 whole cell lysate Lane 5: NIH/3T3 whole cell lysate lane 6: PC-12 whole cell lysate Lysates/proteins at 20 µg per lane. Secondary Goat Anti-Rabbit IgG, (H+L), Peroxidase conjugated at 1/10000 dilution. Predicted band size : 24 kDa Blocking/Dilution buffer: 5% NFD/MTBST.



AP22114a staining Cyclophilin B in human placenta tissue sections by Immunohistochemistry (IHC-P - paraformaldehyde-fixed, paraffin-embedded sections). Tissue was fixed with formaldehyde and blocked with 3% BSA for 0.5 hour at room temperature; antigen retrieval was by heat mediation with a citrate buffer (pH6). Samples were incubated with primary antibody (1/25) for 1 hours at 37°C. A undiluted biotinylated goat polyvalent antibody was used as the secondary antibody.



Overlay histogram showing HeLa cells stained with AP22114a (green line). The cells were fixed with 2% paraformaldehyde (10 min) and then permeabilized with 90% methanol for 10 min. The cells were then incubated in 2% bovine serum albumin to block non-specific protein-protein interactions followed by the antibody (AP22114a, 1:25 dilution) for 60 min at 37°C. The secondary antibody used was Goat-Anti-Rabbit IgG, DyLight® 488 Conjugated Highly Cross-Adsorbed(OH191631) at 1/200 dilution for 40 min at 37°C. Isotype control antibody (blue line) was rabbit IgG (1µg/1x10<sup>6</sup> cells) used under the same conditions. Acquisition of >10, 000 events was performed.

### Cyclophilin B Antibody - Background

PPlases accelerate the folding of proteins. It catalyzes the cis-trans isomerization of proline imidic peptide bonds in oligopeptides.

### Cyclophilin B Antibody - References

- Spik G.,et al.J. Biol. Chem. 266:10735-10738(1991).
- Ota T.,et al.Nat. Genet. 36:40-45(2004).
- Ebert L.,et al.Submitted (JUN-2004) to the EMBL/GenBank/DDBJ databases.
- Zody M.C.,et al.Nature 440:671-675(2006).
- Mural R.J.,et al.Submitted (JUL-2005) to the EMBL/GenBank/DDBJ databases.