

RPS27 Antibody (C-Term)
Purified Rabbit Polyclonal Antibody (Pab)
Catalog # AP22099b

Specification

RPS27 Antibody (C-Term) - Product Information

Application	WB,E
Primary Accession	P42677
Other Accession	Q3T0B7 , Q71UM5 , Q6ZWY3 , P24051 , Q2KHT7 , Q96564 , Q6ZWU9 , Q7RVN2 , Q5RBK1 , Q71TY3 , P47904 , G1TZ76
Reactivity	Human
Predicted	Bovine, Mouse, Rat, Rabbit, Xenopus
Host	Rabbit
Clonality	polyclonal
Isotype	Rabbit IgG
Calculated MW	9461

RPS27 Antibody (C-Term) - Additional Information

Gene ID 6232

Other Names

40S ribosomal protein S27, Metallopan-stimulin 1, MPS-1, RPS27, MPS1

Target/Specificity

This RPS27 antibody is generated from a rabbit immunized with a KLH conjugated synthetic peptide between 46-76 amino acids from human RPS27.

Dilution

WB~~1:2000

Format

Purified polyclonal antibody supplied in PBS with 0.09% (W/V) sodium azide. This antibody is purified through a protein A column, followed by peptide affinity purification.

Storage

Maintain refrigerated at 2-8°C for up to 2 weeks. For long term storage store at -20°C in small aliquots to prevent freeze-thaw cycles.

Precautions

RPS27 Antibody (C-Term) is for research use only and not for use in diagnostic or therapeutic procedures.

RPS27 Antibody (C-Term) - Protein Information

Name RPS27 ([HGNC:10416](#))

Synonyms MPS1

Function Component of the small ribosomal subunit (PubMed:[23636399](#), PubMed:[8706699](#)). The ribosome is a large ribonucleoprotein complex responsible for the synthesis of proteins in the cell (PubMed:[23636399](#)). Required for proper rRNA processing and maturation of 18S rRNAs (PubMed:[25424902](#)). Part of the small subunit (SSU) processome, first precursor of the small eukaryotic ribosomal subunit. During the assembly of the SSU processome in the nucleolus, many ribosome biogenesis factors, an RNA chaperone and ribosomal proteins associate with the nascent pre-rRNA and work in concert to generate RNA folding, modifications, rearrangements and cleavage as well as targeted degradation of pre-ribosomal RNA by the RNA exosome (PubMed:[34516797](#)).

Cellular Location

Cytoplasm. Nucleus, nucleolus

Tissue Location

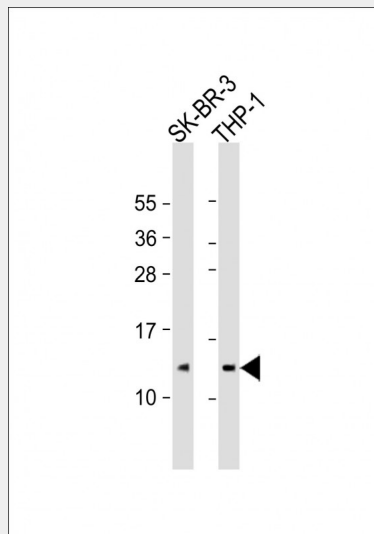
Expressed in a wide variety of actively proliferating cells and tumor tissues.

RPS27 Antibody (C-Term) - Protocols

Provided below are standard protocols that you may find useful for product applications.

- [Western Blot](#)
- [Blocking Peptides](#)
- [Dot Blot](#)
- [Immunohistochemistry](#)
- [Immunofluorescence](#)
- [Immunoprecipitation](#)
- [Flow Cytometry](#)
- [Cell Culture](#)

RPS27 Antibody (C-Term) - Images



All lanes : Anti-RPS27 Antibody (C-Term) at 1:2000 dilution Lane 1: SK-BR-3 whole cell lysate Lane 2: THP-1 whole cell lysate Lysates/proteins at 20 µg per lane. Secondary Goat Anti-Rabbit IgG, (H+L), Peroxidase conjugated at 1/10000 dilution. Predicted band size : 9 kDa Blocking/Dilution buffer: 5% NFDN/TBST.

RPS27 Antibody (C-Term) - References

- Fernandez-Pol J.A., et al. J. Biol. Chem. 268:21198-21204(1993).
Tsui S.K.W., et al. Biochem. Mol. Biol. Int. 40:611-616(1996).
Yoshihama M., et al. Genome Res. 12:379-390(2002).
Ota T., et al. Nat. Genet. 36:40-45(2004).
Gregory S.G., et al. Nature 441:315-321(2006).