

**RPL4 Antibody (C-Term)**  
**Purified Rabbit Polyclonal Antibody (Pab)**  
**Catalog # AP22092b**

**Specification**

---

**RPL4 Antibody (C-Term) - Product Information**

Application	WB,E
Primary Accession	<a href="#">P36578</a>
Other Accession	<a href="#">Q28346</a> , <a href="#">Q9D8E6</a> , <a href="#">Q5RCR3</a> , <a href="#">P50878</a>
Reactivity	Human, Rat
Predicted	Mouse
Host	Rabbit
Clonality	polyclonal
Isotype	Rabbit IgG
Calculated MW	47697

**RPL4 Antibody (C-Term) - Additional Information**

**Gene ID** 6124

**Other Names**

60S ribosomal protein L4, 60S ribosomal protein L1, RPL4, RPL1

**Target/Specificity**

This RPL4 antibody is generated from a rabbit immunized with a KLH conjugated synthetic peptide between 392-424 amino acids from human RPL4.

**Dilution**

WB~~1:2000

**Format**

Purified polyclonal antibody supplied in PBS with 0.09% (W/V) sodium azide. This antibody is purified through a protein A column, followed by peptide affinity purification.

**Storage**

Maintain refrigerated at 2-8°C for up to 2 weeks. For long term storage store at -20°C in small aliquots to prevent freeze-thaw cycles.

**Precautions**

RPL4 Antibody (C-Term) is for research use only and not for use in diagnostic or therapeutic procedures.

**RPL4 Antibody (C-Term) - Protein Information**

**Name** RPL4

**Synonyms** RPL1

**Function** Component of the large ribosomal subunit. The ribosome is a large ribonucleoprotein complex responsible for the synthesis of proteins in the cell.

**Cellular Location**

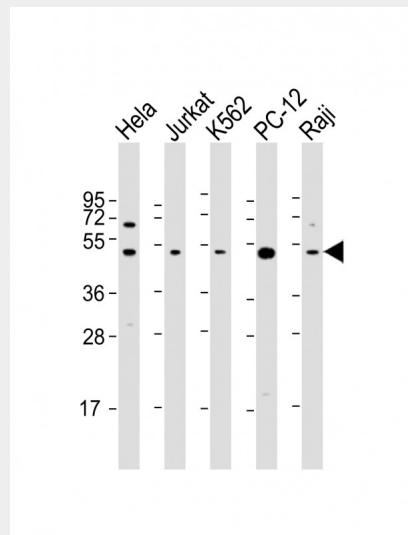
Cytoplasm.

**RPL4 Antibody (C-Term) - Protocols**

Provided below are standard protocols that you may find useful for product applications.

- [Western Blot](#)
- [Blocking Peptides](#)
- [Dot Blot](#)
- [Immunohistochemistry](#)
- [Immunofluorescence](#)
- [Immunoprecipitation](#)
- [Flow Cytometry](#)
- [Cell Culture](#)

**RPL4 Antibody (C-Term) - Images**



All lanes : Anti-RPL4 Antibody (C-Term) at 1:2000 dilution Lane 1: HeLa whole cell lysate Lane 2: Jurkat whole cell lysate Lane 3: K562 whole cell lysate Lane 4: PC-12 whole cell lysate Lane 5: Raji whole cell lysate Lysates/proteins at 20 µg per lane. Secondary Goat Anti-Rabbit IgG, (H+L), Peroxidase conjugated at 1/10000 dilution. Predicted band size : 48 kDa Blocking/Dilution buffer: 5% NFDM/TBST.

**RPL4 Antibody (C-Term) - References**

- Bagni C.,et al.Biochim. Biophys. Acta 1216:475-478(1993).  
Bagni C.,et al.Submitted (JAN-2004) to the EMBL/GenBank/DDBJ databases.  
Kato S.,et al.Submitted (NOV-1993) to the EMBL/GenBank/DDBJ databases.  
Yoshihama M.,et al.Genome Res. 12:379-390(2002).  
Ota T.,et al.Nat. Genet. 36:40-45(2004).