

**GAS6 Antibody (Center)**  
**Purified Rabbit Polyclonal Antibody (Pab)**  
**Catalog # AP22089c**

**Specification**

---

**GAS6 Antibody (Center) - Product Information**

Application	WB,E
Primary Accession	<a href="#">O14393</a>
Reactivity	Human, Rat
Host	Rabbit
Clonality	polyclonal
Isotype	Rabbit IgG
Calculated MW	74925

**GAS6 Antibody (Center) - Additional Information**

**Gene ID** 2621

**Other Names**

Growth arrest-specific protein 6, GAS-6, AXL receptor tyrosine kinase ligand, GAS6, AXLLG

**Target/Specificity**

This GAS6 antibody is generated from a rabbit immunized with a KLH conjugated synthetic peptide between 242-275 amino acids from the Central region of human GAS6.

**Dilution**

WB~~1:2000

**Format**

Purified polyclonal antibody supplied in PBS with 0.09% (W/V) sodium azide. This antibody is purified through a protein A column, followed by peptide affinity purification.

**Storage**

Maintain refrigerated at 2-8°C for up to 2 weeks. For long term storage store at -20°C in small aliquots to prevent freeze-thaw cycles.

**Precautions**

GAS6 Antibody (Center) is for research use only and not for use in diagnostic or therapeutic procedures.

**GAS6 Antibody (Center) - Protein Information**

**Name** GAS6 ([HGNC:4168](#))

**Synonyms** AXLLG

**Function** Ligand for tyrosine-protein kinase receptors AXL, TYRO3 and MER whose signaling is implicated in cell growth and survival, cell adhesion and cell migration. GAS6/AXL signaling plays a

role in various processes such as endothelial cell survival during acidification by preventing apoptosis, optimal cytokine signaling during human natural killer cell development, hepatic regeneration, gonadotropin-releasing hormone neuron survival and migration, platelet activation, or regulation of thrombotic responses.

#### Cellular Location

Secreted.

#### Tissue Location

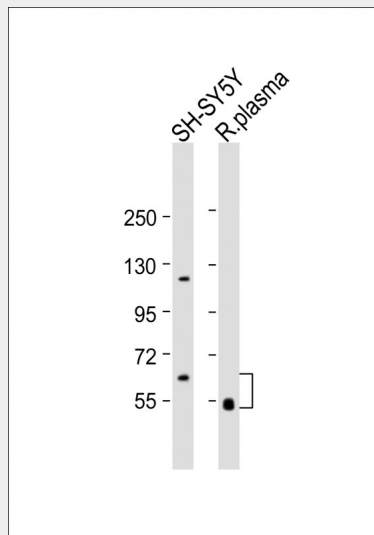
Plasma. Isoform 1 and isoform 2 are widely expressed, isoform 1 being expressed at higher levels than isoform 2 in most tissues. Isoform 2 is the predominant form in spleen

### GAS6 Antibody (Center) - Protocols

Provided below are standard protocols that you may find useful for product applications.

- [Western Blot](#)
- [Blocking Peptides](#)
- [Dot Blot](#)
- [Immunohistochemistry](#)
- [Immunofluorescence](#)
- [Immunoprecipitation](#)
- [Flow Cytometry](#)
- [Cell Culture](#)

### GAS6 Antibody (Center) - Images



All lanes : Anti-GAS6 Antibody (Center) at 1:2000 dilution Lane 1: rat plasma lysate Lane 2: SH-SY5Y whole cell lysate Lysates/proteins at 20  $\mu$ g per lane. Secondary Goat Anti-Rabbit IgG, (H+L), Peroxidase conjugated at 1/10000 dilution. Predicted band size : 80 kDa Blocking/Dilution buffer: 5% NFDM/TBST.

### GAS6 Antibody (Center) - Background

Ligand for tyrosine-protein kinase receptors AXL, TYRO3 and MER whose signaling is implicated in cell growth and survival, cell adhesion and cell migration. GAS6/AXL signaling plays a role in various processes such as endothelial cell survival during acidification by preventing apoptosis, optimal

cytokine signaling during human natural killer cell development, hepatic regeneration, gonadotropin-releasing hormone neuron survival and migration, platelet activation, or regulation of thrombotic responses.

#### **GAS6 Antibody (Center) - References**

- Manfioletti G.,et al.Mol. Cell. Biol. 13:4976-4985(1993).  
Munoz X.,et al.Hum. Mutat. 23:506-512(2004).  
Ota T.,et al.Nat. Genet. 36:40-45(2004).  
Dunham A.,et al.Nature 428:522-528(2004).  
Maree A.O.,et al.Submitted (OCT-2002) to the EMBL/GenBank/DDBJ databases.