

**ITIH4 Antibody (C-Term)**  
**Purified Rabbit Polyclonal Antibody (Pab)**  
**Catalog # AP22074b**

**Specification**

---

**ITIH4 Antibody (C-Term) - Product Information**

Application	WB, FC, E
Primary Accession	<a href="#">Q14624</a>
Reactivity	Human
Host	Rabbit
Clonality	polyclonal
Isotype	Rabbit IgG
Calculated MW	103357

**ITIH4 Antibody (C-Term) - Additional Information**

**Gene ID** 3700

**Other Names**

Inter-alpha-trypsin inhibitor heavy chain H4, ITI heavy chain H4, ITI-HC4, Inter-alpha-inhibitor heavy chain 4, Inter-alpha-trypsin inhibitor family heavy chain-related protein, IHRP, Plasma kallikrein sensitive glycoprotein 120, Gp120, PK-120, 70 kDa inter-alpha-trypsin inhibitor heavy chain H4, 35 kDa inter-alpha-trypsin inhibitor heavy chain H4, ITIH4, IHRP, ITIHL1, PK120

**Target/Specificity**

This ITIH4 antibody is generated from a rabbit immunized with a KLH conjugated synthetic peptide between 885-917 amino acids from human ITIH4.

**Dilution**

WB~~1:2000  
FC~~1:25

**Format**

Purified polyclonal antibody supplied in PBS with 0.09% (W/V) sodium azide. This antibody is purified through a protein A column, followed by peptide affinity purification.

**Storage**

Maintain refrigerated at 2-8°C for up to 2 weeks. For long term storage store at -20°C in small aliquots to prevent freeze-thaw cycles.

**Precautions**

ITIH4 Antibody (C-Term) is for research use only and not for use in diagnostic or therapeutic procedures.

**ITIH4 Antibody (C-Term) - Protein Information**

**Name** ITIH4

**Synonyms** IHRP, ITIHL1, PK120

**Function** Type II acute-phase protein (APP) involved in inflammatory responses to trauma. May also play a role in liver development or regeneration.

**Cellular Location**

Secreted.

**Tissue Location**

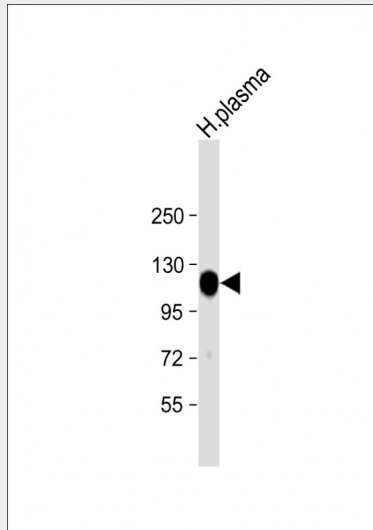
Liver specific.

**ITIH4 Antibody (C-Term) - Protocols**

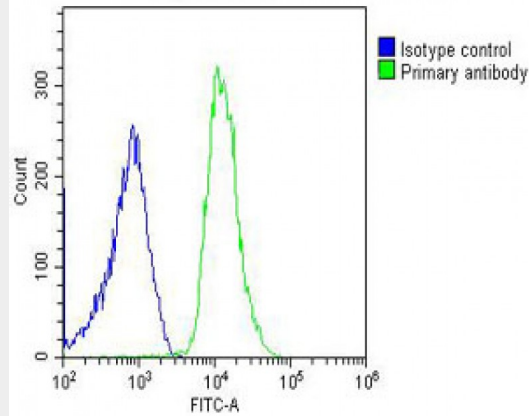
Provided below are standard protocols that you may find useful for product applications.

- [Western Blot](#)
- [Blocking Peptides](#)
- [Dot Blot](#)
- [Immunohistochemistry](#)
- [Immunofluorescence](#)
- [Immunoprecipitation](#)
- [Flow Cytometry](#)
- [Cell Culture](#)

**ITIH4 Antibody (C-Term) - Images**



Anti-ITIH4 Antibody (C-Term) at 1:2000 dilution + human plasma lysate Lysates/proteins at 20  $\mu$ g per lane. Secondary Goat Anti-Rabbit IgG, (H+L), Peroxidase conjugated at 1/10000 dilution. Predicted band size : 103 kDa Blocking/Dilution buffer: 5% NFDM/TBST.



Overlay histogram showing U-2OS cells stained with AP22074b (green line). The cells were fixed with 2% paraformaldehyde (10 min) and then permeabilized with 90% methanol for 10 min. The cells were then incubated in 2% bovine serum albumin to block non-specific protein-protein interactions followed by the antibody (AP22074b, 1:25 dilution) for 60 min at 37°C. The secondary antibody used was Goat-Anti-Rabbit IgG, DyLight® 488 Conjugated Highly Cross-Adsorbed(OH191631) at 1/200 dilution for 40 min at 37°C. Isotype control antibody (blue line) was rabbit IgG (1µg/1x10<sup>6</sup> cells) used under the same conditions. Acquisition of >10,000 events was performed.

#### **ITIH4 Antibody (C-Term) - Background**

Type II acute-phase protein (APP) involved in inflammatory responses to trauma. May also play a role in liver development or regeneration.

#### **ITIH4 Antibody (C-Term) - References**

- Nishimura H., et al. FEBS Lett. 357:207-211(1995).
- Saguchi K., et al. J. Biochem. 117:14-18(1995).
- Saguchi K., et al. J. Biochem. 119:898-905(1996).
- Ota T., et al. Nat. Genet. 36:40-45(2004).
- Kroczyńska B., et al. Biochem. Biophys. Res. Commun. 338:1467-1477(2005).