

**CCT8L2 Antibody (C-Term)**  
**Purified Rabbit Polyclonal Antibody (Pab)**  
**Catalog # AP22051b**

**Specification**

---

**CCT8L2 Antibody (C-Term) - Product Information**

|                   |                        |
|-------------------|------------------------|
| Application       | WB,E                   |
| Primary Accession | <a href="#">O96SF2</a> |
| Reactivity        | Human                  |
| Host              | Rabbit                 |
| Clonality         | polyclonal             |
| Isotype           | Rabbit IgG             |
| Calculated MW     | 59388                  |

**CCT8L2 Antibody (C-Term) - Additional Information**

**Gene ID** 150160

**Other Names**

Putative T-complex protein 1 subunit theta-like 2, CCT8L2, CESK1

**Target/Specificity**

This CCT8L2 antibody is generated from a rabbit immunized with a KLH conjugated synthetic peptide between 511-542 amino acids from human CCT8L2.

**Dilution**

WB~~1:2000

**Format**

Purified polyclonal antibody supplied in PBS with 0.09% (W/V) sodium azide. This antibody is purified through a protein A column, followed by peptide affinity purification.

**Storage**

Maintain refrigerated at 2-8°C for up to 2 weeks. For long term storage store at -20°C in small aliquots to prevent freeze-thaw cycles.

**Precautions**

CCT8L2 Antibody (C-Term) is for research use only and not for use in diagnostic or therapeutic procedures.

**CCT8L2 Antibody (C-Term) - Protein Information**

**Name** CCT8L2

**Synonyms** CESK1

**Function** Possible molecular chaperone; assists the folding of proteins upon ATP hydrolysis.

### Cellular Location

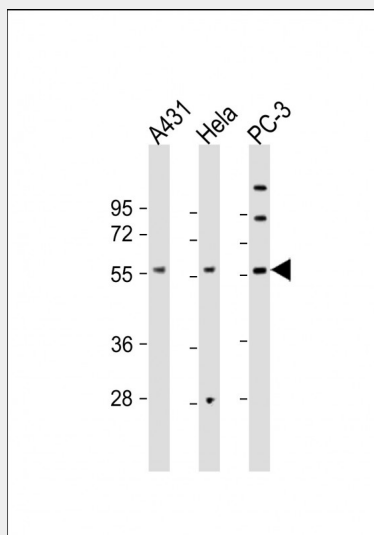
Cytoplasm {ECO:0000250|UniProtKB:P40227}.

### CCT8L2 Antibody (C-Term) - Protocols

Provided below are standard protocols that you may find useful for product applications.

- [Western Blot](#)
- [Blocking Peptides](#)
- [Dot Blot](#)
- [Immunohistochemistry](#)
- [Immunofluorescence](#)
- [Immunoprecipitation](#)
- [Flow Cytometry](#)
- [Cell Culture](#)

### CCT8L2 Antibody (C-Term) - Images



All lanes : Anti-CCT8L2 Antibody (C-Term) at 1:2000 dilution Lane 1: A431 whole cell lysate Lane 2: HeLa whole cell lysate Lane 3: PC-3 whole cell lysate Lysates/proteins at 20 µg per lane. Secondary Goat Anti-Rabbit IgG, (H+L), Peroxidase conjugated at 1/10000 dilution. Predicted band size : 59 kDa Blocking/Dilution buffer: 5% NFD/MTBST.

### CCT8L2 Antibody (C-Term) - Background

Possible molecular chaperone; assists the folding of proteins upon ATP hydrolysis.

### CCT8L2 Antibody (C-Term) - References

- Riazi M.A., et al. *Genomics* 62:90-94(1999).  
Collins J.E., et al. *Genome Biol.* 5:R84.1-R84.11(2004).  
Dunham I., et al. *Nature* 402:489-495(1999).  
Mural R.J., et al. Submitted (JUL-2005) to the EMBL/GenBank/DDBJ databases.