

GC Antibody (C-Term)
Purified Rabbit Polyclonal Antibody (Pab)
Catalog # AP22047b

Specification

GC Antibody (C-Term) - Product Information

Application	WB,E
Primary Accession	P02774
Reactivity	Human
Host	Rabbit
Clonality	polyclonal
Isotype	Rabbit IgG
Calculated MW	52918

GC Antibody (C-Term) - Additional Information

Gene ID 2638

Other Names

Vitamin D-binding protein, DBP, VDB, Gc-globulin, Group-specific component, GC

Target/Specificity

This GC antibody is generated from a rabbit immunized with a KLH conjugated synthetic peptide between 442-473 amino acids from human GC.

Dilution

WB~~1:2000

Format

Purified polyclonal antibody supplied in PBS with 0.09% (W/V) sodium azide. This antibody is purified through a protein A column, followed by peptide affinity purification.

Storage

Maintain refrigerated at 2-8°C for up to 2 weeks. For long term storage store at -20°C in small aliquots to prevent freeze-thaw cycles.

Precautions

GC Antibody (C-Term) is for research use only and not for use in diagnostic or therapeutic procedures.

GC Antibody (C-Term) - Protein Information

Name GC

Function Involved in vitamin D transport and storage, scavenging of extracellular G-actin, enhancement of the chemotactic activity of C5 alpha for neutrophils in inflammation and macrophage activation.

Cellular Location

Secreted.

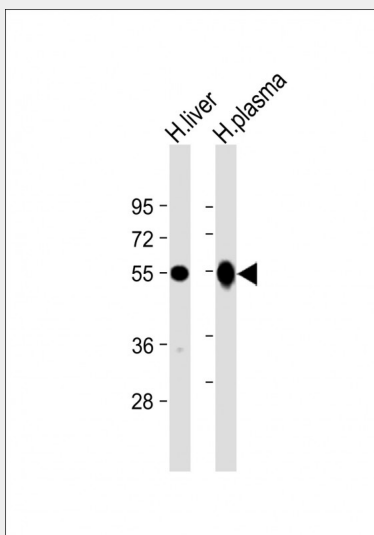
Tissue Location

Expressed in the liver. Found in plasma, ascites, cerebrospinal fluid and urine.

GC Antibody (C-Term) - Protocols

Provided below are standard protocols that you may find useful for product applications.

- [Western Blot](#)
- [Blocking Peptides](#)
- [Dot Blot](#)
- [Immunohistochemistry](#)
- [Immunofluorescence](#)
- [Immunoprecipitation](#)
- [Flow Cytometry](#)
- [Cell Culture](#)

GC Antibody (C-Term) - Images

All lanes : Anti-GC Antibody (C-Term) at 1:2000 dilution Lane 1: human liver lysate Lane 2: human plasma lysate Lysates/proteins at 20 μ g per lane. Secondary Goat Anti-Rabbit IgG, (H+L), Peroxidase conjugated at 1/10000 dilution. Predicted band size : 53 kDa Blocking/Dilution buffer: 5% NFDM/TBST.

GC Antibody (C-Term) - Background

Multifunctional protein found in plasma, ascitic fluid, cerebrospinal fluid, and urine and on the surface of many cell types. In plasma, it carries the vitamin D sterols and prevents polymerization of actin by binding its monomers. DBP associates with membrane-bound immunoglobulin on the surface of B-lymphocytes and with IgG Fc receptor on the membranes of T-lymphocytes.

GC Antibody (C-Term) - References

Cooke N.E., et al. J. Clin. Invest. 76:2420-2424(1985).
Yang F., et al. Proc. Natl. Acad. Sci. U.S.A. 82:7994-7998(1985).

Braun A.,et al.Biochim. Biophys. Acta 1216:385-394(1993).
Witke W.F.,et al.Genomics 16:751-754(1993).
Ota T.,et al.Nat. Genet. 36:40-45(2004).