

**GMPPB Antibody (Center)**  
**Purified Rabbit Polyclonal Antibody (Pab)**  
**Catalog # AP22043c**

**Specification**

---

**GMPPB Antibody (Center) - Product Information**

Application	WB,E
Primary Accession	<a href="#">O9Y5P6</a>
Other Accession	<a href="#">O8BTZ7</a> , <a href="#">POC5I2</a>
Reactivity	Mouse
Predicted	Pig
Host	Rabbit
Clonality	polyclonal
Isotype	Rabbit IgG
Calculated MW	39834

**GMPPB Antibody (Center) - Additional Information**

**Gene ID** 29925

**Other Names**

Mannose-1-phosphate guanyltransferase beta, 2.7.7.13, GDP-mannose pyrophosphorylase B, GTP-mannose-1-phosphate guanylyltransferase beta, GMPPB

**Target/Specificity**

This GMPPB antibody is generated from a rabbit immunized with a KLH conjugated synthetic peptide between 129-162 amino acids from the Central region of human GMPPB.

**Dilution**

WB~~1:4000

**Format**

Purified polyclonal antibody supplied in PBS with 0.09% (W/V) sodium azide. This antibody is purified through a protein A column, followed by peptide affinity purification.

**Storage**

Maintain refrigerated at 2-8°C for up to 2 weeks. For long term storage store at -20°C in small aliquots to prevent freeze-thaw cycles.

**Precautions**

GMPPB Antibody (Center) is for research use only and not for use in diagnostic or therapeutic procedures.

**GMPPB Antibody (Center) - Protein Information**

**Name** GMPPB ([HGNC:22932](#))

**Function** Catalyzes the formation of GDP-mannose, an essential precursor of glycan moieties of

glycoproteins and glycolipids.

#### Cellular Location

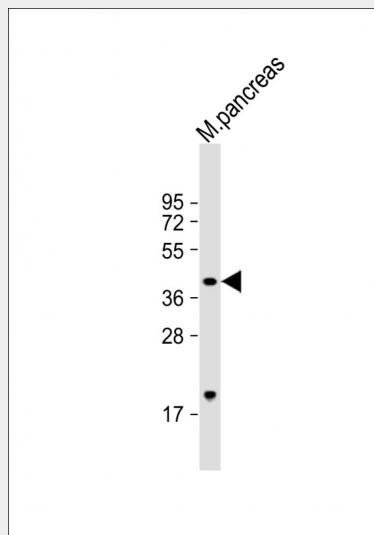
Cytoplasm.

#### GMPPB Antibody (Center) - Protocols

Provided below are standard protocols that you may find useful for product applications.

- [Western Blot](#)
- [Blocking Peptides](#)
- [Dot Blot](#)
- [Immunohistochemistry](#)
- [Immunofluorescence](#)
- [Immunoprecipitation](#)
- [Flow Cytometry](#)
- [Cell Culture](#)

#### GMPPB Antibody (Center) - Images



Anti-GMPPB Antibody (Center) at 1:4000 dilution + mouse pancreas lysate Lysates/proteins at 20  $\mu$ g per lane. Secondary Goat Anti-Rabbit IgG, (H+L), Peroxidase conjugated at 1/10000 dilution. Predicted band size : 40 kDa Blocking/Dilution buffer: 5% NFD/MTBST.

#### GMPPB Antibody (Center) - References

- Matthijs G., et al. Submitted (MAR-1999) to the EMBL/GenBank/DDBJ databases.  
Ota T., et al. Nat. Genet. 36:40-45(2004).  
Muzny D.M., et al. Nature 440:1194-1198(2006).  
Burkard T.R., et al. BMC Syst. Biol. 5:17-17(2011).  
Van Damme P., et al. Proc. Natl. Acad. Sci. U.S.A. 109:12449-12454(2012).