

RPS10 Antibody (Center)
Purified Rabbit Polyclonal Antibody (Pab)
Catalog # AP22040c

Specification

RPS10 Antibody (Center) - Product Information

Application	WB,E
Primary Accession	P46783
Other Accession	O9NQ39 , O3T0F4 , O07254 , G1T168
Reactivity	Human, Rat
Predicted	Bovine, Rabbit, Xenopus
Host	Rabbit
Clonality	polyclonal
Isotype	Rabbit IgG
Calculated MW	18898

RPS10 Antibody (Center) - Additional Information

Gene ID 6204

Other Names

40S ribosomal protein S10, RPS10

Target/Specificity

This RPS10 antibody is generated from a rabbit immunized with a KLH conjugated synthetic peptide between 78-110 amino acids from the Central region of human RPS10.

Dilution

WB~~1:2000

Format

Purified polyclonal antibody supplied in PBS with 0.09% (W/V) sodium azide. This antibody is purified through a protein A column, followed by peptide affinity purification.

Storage

Maintain refrigerated at 2-8°C for up to 2 weeks. For long term storage store at -20°C in small aliquots to prevent freeze-thaw cycles.

Precautions

RPS10 Antibody (Center) is for research use only and not for use in diagnostic or therapeutic procedures.

RPS10 Antibody (Center) - Protein Information

Name RPS10

Function Component of the 40S ribosomal subunit (PubMed:[23636399](#)). The ribosome is a large ribonucleoprotein complex responsible for the synthesis of proteins in the cell

(PubMed:[23636399](#)).

Cellular Location

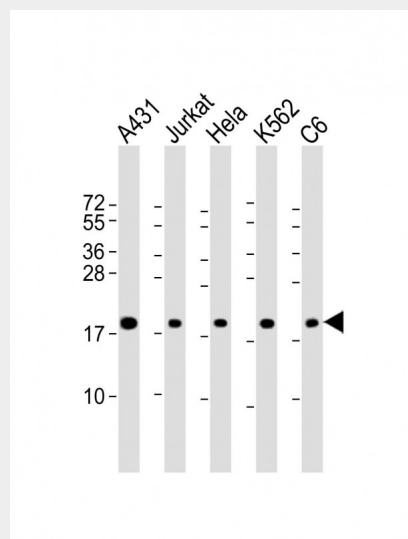
Cytoplasm. Nucleus, nucleolus. Note=Localized in the granular component (GC) region of the nucleolus. Methylation is required for its localization in the GC region. Colocalizes with NPS1 in the GC region of the nucleolus.

RPS10 Antibody (Center) - Protocols

Provided below are standard protocols that you may find useful for product applications.

- [Western Blot](#)
- [Blocking Peptides](#)
- [Dot Blot](#)
- [Immunohistochemistry](#)
- [Immunofluorescence](#)
- [Immunoprecipitation](#)
- [Flow Cytometry](#)
- [Cell Culture](#)

RPS10 Antibody (Center) - Images



All lanes : Anti-RPS10 Antibody (Center) at 1:2000 dilution Lane 1: A431 whole cell lysate Lane 2: Jurkat whole cell lysate Lane 3: HeLa whole cell lysate Lane 4: K562 whole cell lysate Lane 5: C6 whole cell lysate Lysates/proteins at 20 µg per lane. Secondary Goat Anti-Rabbit IgG, (H+L), Peroxidase conjugated at 1/10000 dilution. Predicted band size : 19 kDa Blocking/Dilution buffer: 5% NFDM/TBST.

RPS10 Antibody (Center) - Background

Component of the 40S ribosomal subunit.

RPS10 Antibody (Center) - References

- Frigerio J.-M., et al. *Biochim. Biophys. Acta* 1262:64-68(1995).
Ota T., et al. *Nat. Genet.* 36:40-45(2004).
Mungall A.J., et al. *Nature* 425:805-811(2003).

Mural R.J.,et al.Submitted (JUL-2005) to the EMBL/GenBank/DDBJ databases.
Vladimirov S.N.,et al.Eur. J. Biochem. 239:144-149(1996).