

**RPS17 Antibody (Center)**  
**Purified Rabbit Polyclonal Antibody (Pab)**  
**Catalog # AP22039c**

**Specification**

---

**RPS17 Antibody (Center) - Product Information**

Application	WB,E
Primary Accession	<a href="#">P08708</a>
Other Accession	<a href="#">P0CW22</a> , <a href="#">A5PK63</a> , <a href="#">P63273</a> , <a href="#">P08636</a> , <a href="#">O7ZUB2</a> , <a href="#">P63274</a> , <a href="#">P63275</a> , <a href="#">O90YQ6</a> , <a href="#">P63276</a> , <a href="#">O6QAP7</a> , <a href="#">P04644</a> , <a href="#">O962R2</a> , <a href="#">G1TU13</a>
Reactivity	Human
Predicted	Bovine, Chicken, Hamster, Mouse, Pig, Rabbit, Rat
Host	Rabbit
Clonality	polyclonal
Isotype	Rabbit IgG
Calculated MW	15550

**RPS17 Antibody (Center) - Additional Information**

**Gene ID** 6218

**Other Names**

40S ribosomal protein S17, RPS17

**Target/Specificity**

This RPS17 antibody is generated from a rabbit immunized with a KLH conjugated synthetic peptide between 55-87 amino acids from the Central region of human RPS17.

**Dilution**

WB~~1:2000

**Format**

Purified polyclonal antibody supplied in PBS with 0.09% (W/V) sodium azide. This antibody is purified through a protein A column, followed by peptide affinity purification.

**Storage**

Maintain refrigerated at 2-8°C for up to 2 weeks. For long term storage store at -20°C in small aliquots to prevent freeze-thaw cycles.

**Precautions**

RPS17 Antibody (Center) is for research use only and not for use in diagnostic or therapeutic procedures.

**RPS17 Antibody (Center) - Protein Information**

**Name** RPS17 ([HGNC:10397](#))

**Function** Component of the small ribosomal subunit (PubMed:[23636399](#)). The ribosome is a large ribonucleoprotein complex responsible for the synthesis of proteins in the cell (PubMed:[23636399](#)). Part of the small subunit (SSU) processome, first precursor of the small eukaryotic ribosomal subunit. During the assembly of the SSU processome in the nucleolus, many ribosome biogenesis factors, an RNA chaperone and ribosomal proteins associate with the nascent pre-rRNA and work in concert to generate RNA folding, modifications, rearrangements and cleavage as well as targeted degradation of pre-ribosomal RNA by the RNA exosome (PubMed:[34516797](#)).

#### Cellular Location

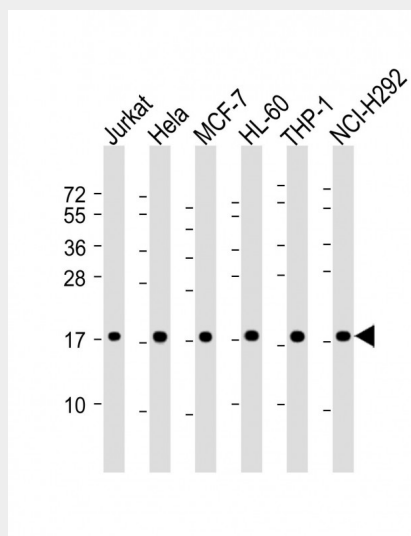
Cytoplasm. Nucleus, nucleolus

### RPS17 Antibody (Center) - Protocols

Provided below are standard protocols that you may find useful for product applications.

- [Western Blot](#)
- [Blocking Peptides](#)
- [Dot Blot](#)
- [Immunohistochemistry](#)
- [Immunofluorescence](#)
- [Immunoprecipitation](#)
- [Flow Cytometry](#)
- [Cell Culture](#)

### RPS17 Antibody (Center) - Images



All lanes : Anti-RPS17 Antibody (Center) at 1:2000 dilution Lane 1: Jurkat whole cell lysate Lane 2: HeLa whole cell lysate Lane 3: MCF-7 whole cell lysate Lane 4: HL-60 whole cell lysate Lane 5: THP-1 whole cell lysate Lane 6: NCI-H292 whole cell lysate Lysates/proteins at 20 µg per lane. Secondary Goat Anti-Rabbit IgG, (H+L), Peroxidase conjugated at 1/10000 dilution. Predicted band size : 16 kDa Blocking/Dilution buffer: 5% NFD/MTBST.

### RPS17 Antibody (Center) - References

Chen I.-T.,et al.Proc. Natl. Acad. Sci. U.S.A. 83:6907-6911(1986).  
Chen I.-T.,et al.Gene 70:107-116(1988).

Ota T., et al. Nat. Genet. 36:40-45(2004).

Zody M.C., et al. Nature 440:671-675(2006).

Mural R.J., et al. Submitted (JUL-2005) to the EMBL/GenBank/DDBJ databases.