

RPS10 Antibody (C-Term)
Purified Rabbit Polyclonal Antibody (Pab)
Catalog # AP22038b**Specification**

RPS10 Antibody (C-Term) - Product Information

Application	IF, WB, FC,E
Primary Accession	P46783
Other Accession	Q3T0F4 , G1T168
Reactivity	Human, Mouse, Rat
Predicted	Bovine, Rabbit
Host	Rabbit
Clonality	polyclonal
Isotype	Rabbit IgG
Calculated MW	18898
Antigen Region	96-129

RPS10 Antibody (C-Term) - Additional Information**Gene ID** 6204**Other Names**

40S ribosomal protein S10, RPS10

Target/Specificity

This RPS10 antibody is generated from a rabbit immunized with a KLH conjugated synthetic peptide between 96-129 amino acids from human RPS10.

Dilution

IF~~1:25

WB~~1:2000

FC~~1:25

Format

Purified polyclonal antibody supplied in PBS with 0.09% (W/V) sodium azide. This antibody is purified through a protein A column, followed by peptide affinity purification.

Storage

Maintain refrigerated at 2-8°C for up to 2 weeks. For long term storage store at -20°C in small aliquots to prevent freeze-thaw cycles.

Precautions

RPS10 Antibody (C-Term) is for research use only and not for use in diagnostic or therapeutic procedures.

RPS10 Antibody (C-Term) - Protein Information**Name** RPS10

Function Component of the 40S ribosomal subunit (PubMed:[23636399](#)). The ribosome is a large ribonucleoprotein complex responsible for the synthesis of proteins in the cell (PubMed:[23636399](#)).

Cellular Location

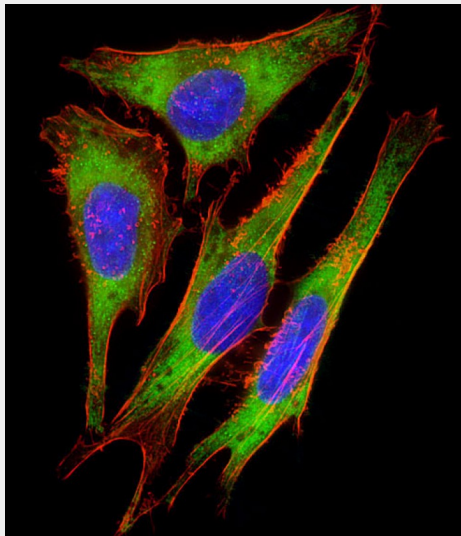
Cytoplasm. Nucleus, nucleolus. Note=Localized in the granular component (GC) region of the nucleolus. Methylation is required for its localization in the GC region. Colocalizes with NPS1 in the GC region of the nucleolus.

RPS10 Antibody (C-Term) - Protocols

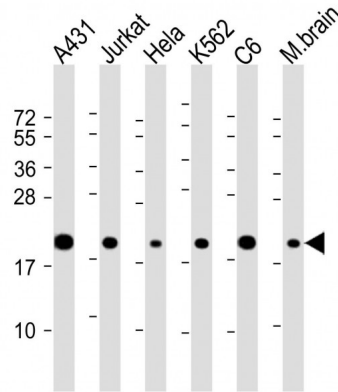
Provided below are standard protocols that you may find useful for product applications.

- [Western Blot](#)
- [Blocking Peptides](#)
- [Dot Blot](#)
- [Immunohistochemistry](#)
- [Immunofluorescence](#)
- [Immunoprecipitation](#)
- [Flow Cytometry](#)
- [Cell Culture](#)

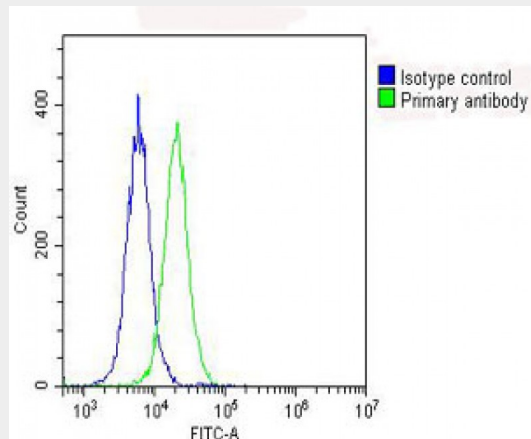
RPS10 Antibody (C-Term) - Images



Immunofluorescent analysis of 4% paraformaldehyde-fixed, 0.1% Triton X-100 permeabilized HeLa (human cervical epithelial adenocarcinoma cell line) cells labeling RPS10 with AP22038b at 1/25 dilution, followed by Dylight® 488-conjugated goat anti-rabbit IgG (NK179883) secondary antibody at 1/200 dilution (green). Immunofluorescence image showing cytoplasm staining on HeLa cell line. Cytoplasmic actin is detected with Dylight® 554 Phalloidin (PD18466410) at 1/100 dilution (red).The nuclear counter stain is DAPI (blue).



All lanes : Anti-RPS10 Antibody (C-Term) at 1:2000 dilution Lane 1: A431 whole cell lysate Lane 2: Jurkat whole cell lysate Lane 3: Hela whole cell lysate Lane 4: K562 whole cell lysate Lane 5: C6 whole cell lysate Lane 6: mouse brain lysate Lysates/proteins at 20 µg per lane. Secondary Goat Anti-Rabbit IgG, (H+L), Peroxidase conjugated at 1/10000 dilution. Predicted band size : 19 kDa Blocking/Dilution buffer: 5% NFD/DM/TBST.



Overlay histogram showing HeLa cells stained with AP22038b (green line). The cells were fixed with 2% paraformaldehyde (10 min) and then permeabilized with 90% methanol for 10 min. The cells were then incubated in 2% bovine serum albumin to block non-specific protein-protein interactions followed by the antibody (AP22038b, 1:25 dilution) for 60 min at 37°C. The secondary antibody used was Goat-Anti-Rabbit IgG, DyLight® 488 Conjugated Highly Cross-Adsorbed(OH191631) at 1/200 dilution for 40 min at 37°C. Isotype control antibody (blue line) was rabbit IgG (1µg/1x10⁶ cells) used under the same conditions. Acquisition of >10, 000 events was performed.

RPS10 Antibody (C-Term) - Background

Component of the 40S ribosomal subunit.

RPS10 Antibody (C-Term) - References

- Frigerio J.-M., et al. *Biochim. Biophys. Acta* 1262:64-68(1995).
- Ota T., et al. *Nat. Genet.* 36:40-45(2004).
- Mungall A.J., et al. *Nature* 425:805-811(2003).
- Mural R.J., et al. Submitted (JUL-2005) to the EMBL/GenBank/DDBJ databases.

Vladimirov S.N., et al. Eur. J. Biochem. 239:144-149(1996).