

**RSL1D1 Antibody (C-Term)**  
**Purified Rabbit Polyclonal Antibody (Pab)**  
**Catalog # AP22027b**

**Specification**

---

**RSL1D1 Antibody (C-Term) - Product Information**

Application	WB,E
Primary Accession	<a href="#">O76021</a>
Other Accession	<a href="#">Q5RCE6</a>
Reactivity	Human
Host	Rabbit
Clonality	polyclonal
Isotype	Rabbit IgG
Calculated MW	54973
Antigen Region	455-485

**RSL1D1 Antibody (C-Term) - Additional Information**

**Gene ID** 26156

**Other Names**

Ribosomal L1 domain-containing protein 1, CATX-11, Cellular senescence-inhibited gene protein, Protein PBK1, RSL1D1

**Target/Specificity**

This RSL1D1 antibody is generated from a rabbit immunized with a KLH conjugated synthetic peptide between 455-485 amino acids from human RSL1D1.

**Dilution**

WB~~1:2000

**Format**

Purified polyclonal antibody supplied in PBS with 0.09% (W/V) sodium azide. This antibody is purified through a protein A column, followed by peptide affinity purification.

**Storage**

Maintain refrigerated at 2-8°C for up to 2 weeks. For long term storage store at -20°C in small aliquots to prevent freeze-thaw cycles.

**Precautions**

RSL1D1 Antibody (C-Term) is for research use only and not for use in diagnostic or therapeutic procedures.

**RSL1D1 Antibody (C-Term) - Protein Information**

**Name** RSL1D1

**Synonyms** CATX11, CSIG {ECO:0000303|PubMed:1867864

**Function** Regulates cellular senescence through inhibition of PTEN translation. Acts as a pro-apoptotic regulator in response to DNA damage.

**Cellular Location**

Nucleus, nucleolus. Note=Colocalizes with ING1 in the nucleolus after UV stress.

**Tissue Location**

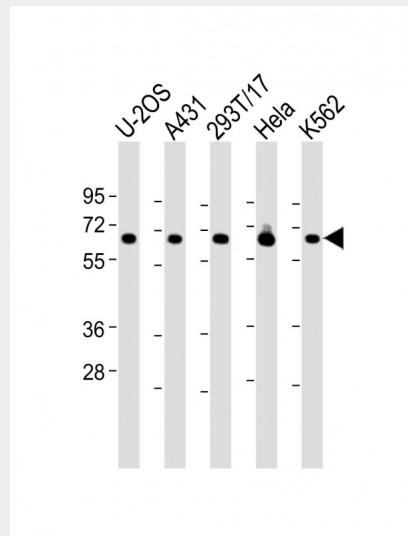
Expressed at high intensities in the heart, skeletal muscle, and placenta.

**RSL1D1 Antibody (C-Term) - Protocols**

Provided below are standard protocols that you may find useful for product applications.

- [Western Blot](#)
- [Blocking Peptides](#)
- [Dot Blot](#)
- [Immunohistochemistry](#)
- [Immunofluorescence](#)
- [Immunoprecipitation](#)
- [Flow Cytometry](#)
- [Cell Culture](#)

**RSL1D1 Antibody (C-Term) - Images**



All lanes : Anti-RSL1D1 Antibody (C-Term) at 1:2000 dilution Lane 1: U-2OS whole cell lysate Lane 2: A431 whole cell lysate Lane 3: 293T/17 whole cell lysate Lane 4: HeLa whole cell lysate Lane 5: K562 whole cell lysate Lysates/proteins at 20 µg per lane. Secondary Goat Anti-Rabbit IgG, (H+L), Peroxidase conjugated at 1/10000 dilution. Predicted band size : 55 kDa Blocking/Dilution buffer: 5% NFDN/TBST.

**RSL1D1 Antibody (C-Term) - Background**

Regulates cellular senescence through inhibition of PTEN translation. Acts as a pro-apoptotic regulator in response to DNA damage.

**RSL1D1 Antibody (C-Term) - References**

Huch G.,et al.Placenta 19:557-567(1998).  
Petroziello J.,et al.Oncogene 23:7734-7745(2004).  
Guo S.-Z.,et al.Submitted (SEP-2002) to the EMBL/GenBank/DDBJ databases.  
Ota T.,et al.Nat. Genet. 36:40-45(2004).  
Martin J.,et al.Nature 432:988-994(2004).