

**GBGT1 Antibody (Center)**  
**Purified Rabbit Polyclonal Antibody (Pab)**  
**Catalog # AP22026c**

**Specification**

---

**GBGT1 Antibody (Center) - Product Information**

Application	WB,E
Primary Accession	<a href="#">Q8N5D6</a>
Reactivity	Human
Host	Rabbit
Clonality	polyclonal
Isotype	Rabbit IgG
Calculated MW	40127
Antigen Region	154-185

**GBGT1 Antibody (Center) - Additional Information**

**Gene ID** 26301

**Other Names**

Globoside alpha-1, 3-N-acetylgalactosaminyltransferase 1, 2.4.1.-, Forssman glycolipid synthase-like protein, GBGT1

**Target/Specificity**

This GBGT1 antibody is generated from a rabbit immunized with a KLH conjugated synthetic peptide between 154-185 amino acids from the Central region of human GBGT1.

**Dilution**

WB~~1:2000

**Format**

Purified polyclonal antibody supplied in PBS with 0.09% (W/V) sodium azide. This antibody is purified through a protein A column, followed by peptide affinity purification.

**Storage**

Maintain refrigerated at 2-8°C for up to 2 weeks. For long term storage store at -20°C in small aliquots to prevent freeze-thaw cycles.

**Precautions**

GBGT1 Antibody (Center) is for research use only and not for use in diagnostic or therapeutic procedures.

**GBGT1 Antibody (Center) - Protein Information**

**Name** GBGT1 ([HGNC:20460](#))

**Function** Has lost the ability to synthesize Forssman glycolipid antigen (FORS1/FG) (PubMed:[10506200](#)). Might have acquired an alternative function in glycosphingolipid metabolism,

but it remains to be established. It appears to have drifted more slowly than confirmed pseudogenes in the glycosyltransferase 6 family, suggesting that it has remained under evolutionary pressure.

#### Cellular Location

Golgi apparatus membrane; Single-pass type II membrane protein

#### Tissue Location

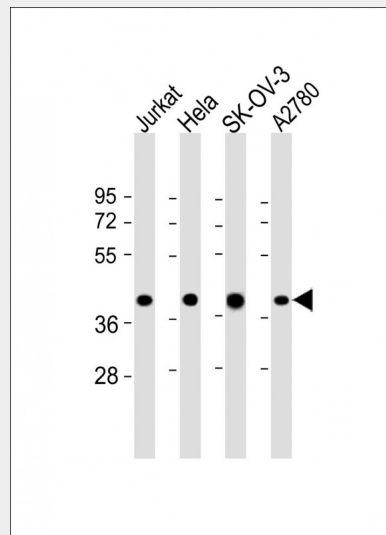
Widely expressed. Expressed at higher level in placenta, ovary and peripheral blood leukocyte, whereas it is weakly expressed in liver, thymus, and testis (PubMed:10506200). Expressed in bone marrow erythroid cells (PubMed:23255552)

### GBGT1 Antibody (Center) - Protocols

Provided below are standard protocols that you may find useful for product applications.

- [Western Blot](#)
- [Blocking Peptides](#)
- [Dot Blot](#)
- [Immunohistochemistry](#)
- [Immunofluorescence](#)
- [Immunoprecipitation](#)
- [Flow Cytometry](#)
- [Cell Culture](#)

### GBGT1 Antibody (Center) - Images



All lanes : Anti-GBGT1 Antibody (Center) at 1:2000 dilution Lane 1: Jurkat whole cell lysate Lane 2: HeLa whole cell lysate Lane 3: SK-OV-3 whole cell lysate Lane 4: A2780 whole cell lysate Lysates/proteins at 20 µg per lane. Secondary Goat Anti-Rabbit IgG, (H+L), Peroxidase conjugated at 1/10000 dilution. Predicted band size : 40 kDa Blocking/Dilution buffer: 5% NFDN/TBST.

### GBGT1 Antibody (Center) - Background

Catalyzes the formation of some glycolipid via the addition of N-acetylgalactosamine (GalNAc) in alpha-1,3-linkage to some substrate. Glycolipids probably serve for adherence of some pathogens.

**GBGT1 Antibody (Center) - References**

Xu H.,et al.J. Biol. Chem. 274:29390-29398(1999).

Clark H.F.,et al.Genome Res. 13:2265-2270(2003).

Ota T.,et al.Nat. Genet. 36:40-45(2004).

Humphray S.J.,et al.Nature 429:369-374(2004).

Mural R.J.,et al.Submitted (JUL-2005) to the EMBL/GenBank/DDBJ databases.