

CERS2 Antibody (Center)
Purified Rabbit Polyclonal Antibody (Pab)
Catalog # AP22022c

Specification

CERS2 Antibody (Center) - Product Information

Application	WB,E
Primary Accession	O96G23
Reactivity	Human
Host	Rabbit
Clonality	polyclonal
Isotype	Rabbit IgG
Calculated MW	44876

CERS2 Antibody (Center) - Additional Information

Gene ID 29956

Other Names

Ceramide synthase 2, CerS2, LAG1 longevity assurance homolog 2, SP260, Tumor metastasis-suppressor gene 1 protein, CERS2, LASS2, TMSG1

Target/Specificity

This CERS2 antibody is generated from a rabbit immunized with a KLH conjugated synthetic peptide between 137-168 amino acids from the Central region of human CERS2.

Dilution

WB~~1:2000

Format

Purified polyclonal antibody supplied in PBS with 0.09% (W/V) sodium azide. This antibody is purified through a protein A column, followed by peptide affinity purification.

Storage

Maintain refrigerated at 2-8°C for up to 2 weeks. For long term storage store at -20°C in small aliquots to prevent freeze-thaw cycles.

Precautions

CERS2 Antibody (Center) is for research use only and not for use in diagnostic or therapeutic procedures.

CERS2 Antibody (Center) - Protein Information

Name CERS2 {ECO:0000303|PubMed:17977534, ECO:0000312|HGNC:HGNC:14076}

Function Ceramide synthase that catalyzes the transfer of the acyl chain from acyl-CoA to a sphingoid base, with high selectivity toward very-long-chain fatty acyl-CoA (chain length C22-C27) (PubMed:[17977534](#), PubMed:[18165233](#), PubMed:[18541923](#), PubMed:[19728861](#),

PubMed:[20937905](#), PubMed:[22144673](#), PubMed:[22661289](#), PubMed:[26887952](#), PubMed:[29632068](#)). N- acylates sphinganine and sphingosine bases to form dihydroceramides and ceramides in de novo synthesis and salvage pathways, respectively (By similarity) (PubMed:[17977534](#), PubMed:[18165233](#), PubMed:[18541923](#), PubMed:[19728861](#), PubMed:[20937905](#), PubMed:[22144673](#), PubMed:[22661289](#), PubMed:[26887952](#), PubMed:[29632068](#)). Plays a non-redundant role in the synthesis of ceramides with very-long-chain fatty acids in kidney, liver and brain. Regulates the abundance of myelin-specific sphingolipids galactosylceramide and sulfate that affects myelin sheath architecture and motor neuron functions (By similarity).

Cellular Location

Endoplasmic reticulum membrane; Multi-pass membrane protein

Tissue Location

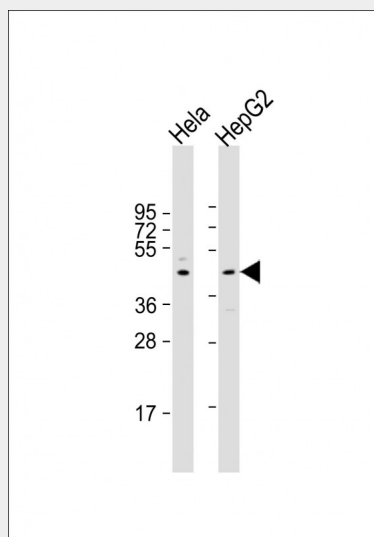
Expressed in kidney, liver, brain, heart, placenta and lung.

CERS2 Antibody (Center) - Protocols

Provided below are standard protocols that you may find useful for product applications.

- [Western Blot](#)
- [Blocking Peptides](#)
- [Dot Blot](#)
- [Immunohistochemistry](#)
- [Immunofluorescence](#)
- [Immunoprecipitation](#)
- [Flow Cytometry](#)
- [Cell Culture](#)

CERS2 Antibody (Center) - Images



All lanes : Anti-CERS2 Antibody (Center) at 1:2000 dilution Lane 1: HeLa whole cell lysate Lane 2: HepG2 whole cell lysate Lysates/proteins at 20 µg per lane. Secondary Goat Anti-Rabbit IgG, (H+L), Peroxidase conjugated at 1/10000 dilution. Predicted band size : 45 kDa Blocking/Dilution buffer: 5% NFD/MTBST.

CERS2 Antibody (Center) - Background

Suppresses the growth of cancer cells. May be involved in sphingolipid synthesis.

CERS2 Antibody (Center) - References

Pan H., et al. Genomics 77:58-64(2001).

Qin W.-X., et al. Submitted (MAY-2002) to the EMBL/GenBank/DDBJ databases.

Xingfeng C., et al. Submitted (MAR-2002) to the EMBL/GenBank/DDBJ databases.

Gregory S.G., et al. Nature 441:315-321(2006).

Mural R.J., et al. Submitted (SEP-2005) to the EMBL/GenBank/DDBJ databases.