

MTUS1 Antibody (C-Term)
Purified Rabbit Polyclonal Antibody (Pab)
Catalog # AP22012b

Specification

MTUS1 Antibody (C-Term) - Product Information

| | |
|-------------------|------------------------|
| Application | WB,E |
| Primary Accession | O9ULD2 |
| Other Accession | O5R9I1 |
| Reactivity | Human |
| Host | Rabbit |
| Clonality | polyclonal |
| Isotype | Rabbit IgG |
| Calculated MW | 141397 |

MTUS1 Antibody (C-Term) - Additional Information

Gene ID 57509

Other Names

Microtubule-associated tumor suppressor 1, AT2 receptor-binding protein, Angiotensin-II type 2 receptor-interacting protein, Mitochondrial tumor suppressor 1, MTUS1, ATBP, ATIP, GK1, KIAA1288, MTSG1

Target/Specificity

This MTUS1 antibody is generated from a rabbit immunized with a KLH conjugated synthetic peptide between 983-1017 amino acids from human MTUS1.

Dilution

WB~~1:2000

Format

Purified polyclonal antibody supplied in PBS with 0.09% (W/V) sodium azide. This antibody is purified through a protein A column, followed by peptide affinity purification.

Storage

Maintain refrigerated at 2-8°C for up to 2 weeks. For long term storage store at -20°C in small aliquots to prevent freeze-thaw cycles.

Precautions

MTUS1 Antibody (C-Term) is for research use only and not for use in diagnostic or therapeutic procedures.

MTUS1 Antibody (C-Term) - Protein Information

Name MTUS1

Synonyms ATBP, ATIP, GK1, KIAA1288, MTSG1

Function Cooperates with AGTR2 to inhibit ERK2 activation and cell proliferation. May be required for AGTR2 cell surface expression. Together with PTPN6, induces UBE2V2 expression upon angiotensin-II stimulation. Isoform 1 inhibits breast cancer cell proliferation, delays the progression of mitosis by prolonging metaphase and reduces tumor growth.

Cellular Location

Mitochondrion. Golgi apparatus. Cell membrane. Nucleus. Note=In neurons, translocates into the nucleus after treatment with angiotensin-II.

Tissue Location

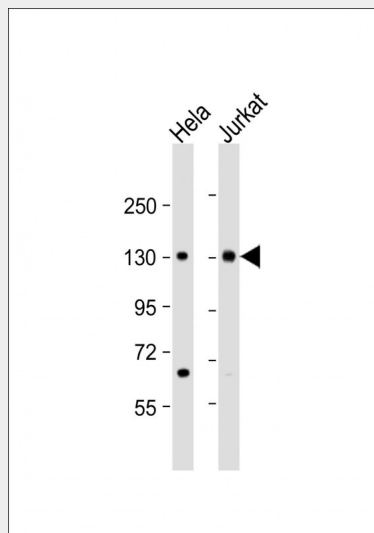
Ubiquitously expressed (at protein level). Highly expressed in brain. Down-regulated in ovarian carcinoma, pancreas carcinoma, colon carcinoma and head and neck squamous cell carcinoma (HNSCC). Isoform 1 is the major isoform in most peripheral tissues Isoform 2 is abundant in most peripheral tissues. Isoform 3 is the major isoform in brain, female reproductive tissues, thyroid and heart Within brain it is highly expressed in corpus callosum and pons Isoform 6 is brain-specific, it is the major isoform in cerebellum and fetal brain.

MTUS1 Antibody (C-Term) - Protocols

Provided below are standard protocols that you may find useful for product applications.

- [Western Blot](#)
- [Blocking Peptides](#)
- [Dot Blot](#)
- [Immunohistochemistry](#)
- [Immunofluorescence](#)
- [Immunoprecipitation](#)
- [Flow Cytometry](#)
- [Cell Culture](#)

MTUS1 Antibody (C-Term) - Images



All lanes : Anti-MTUS1 Antibody (C-Term) at 1:2000 dilution Lane 1: HeLa whole cell lysate Lane 2: Jurkat whole cell lysate Lysates/proteins at 20 µg per lane. Secondary Goat Anti-Rabbit IgG, (H+L), Peroxidase conjugated at 1/10000 dilution. Predicted band size : 141 kDa Blocking/Dilution buffer: 5% NFDM/TBST.

MTUS1 Antibody (C-Term) - Background

Cooperates with AGTR2 to inhibit ERK2 activation and cell proliferation. May be required for AGTR2 cell surface expression. Together with PTPN6, induces UBE2V2 expression upon angiotensin-II stimulation. Isoform 1 inhibits breast cancer cell proliferation, delays the progression of mitosis by prolonging metaphase and reduces tumor growth.

MTUS1 Antibody (C-Term) - References

Kinjo T., et al. J. Hum. Genet. 45:12-17(2000).
Seibold S., et al. FASEB J. 17:1180-1182(2003).
Nouet S., et al. J. Biol. Chem. 279:28989-28997(2004).
Ota T., et al. Nat. Genet. 36:40-45(2004).
Bechtel S., et al. BMC Genomics 8:399-399(2007).