

PIGC Antibody (Center)
Purified Rabbit Polyclonal Antibody (Pab)
Catalog # AP21999c

Specification

PIGC Antibody (Center) - Product Information

Application	WB,E
Primary Accession	O92535
Reactivity	Human
Host	Rabbit
Clonality	polyclonal
Isotype	Rabbit IgG
Calculated MW	33583

PIGC Antibody (Center) - Additional Information

Gene ID 5279

Other Names

Phosphatidylinositol N-acetylglucosaminyltransferase subunit C, 2.4.1.198,
Phosphatidylinositol-glycan biosynthesis class C protein, PIG-C, PIGC, GPI2

Target/Specificity

This PIGC antibody is generated from a rabbit immunized with a KLH conjugated synthetic peptide between 81-112 amino acids from the Central region of human PIGC.

Dilution

WB~~1:2000

Format

Purified polyclonal antibody supplied in PBS with 0.09% (W/V) sodium azide. This antibody is purified through a protein A column, followed by peptide affinity purification.

Storage

Maintain refrigerated at 2-8°C for up to 2 weeks. For long term storage store at -20°C in small aliquots to prevent freeze-thaw cycles.

Precautions

PIGC Antibody (Center) is for research use only and not for use in diagnostic or therapeutic procedures.

PIGC Antibody (Center) - Protein Information

Name PIGC ([HGNC:8960](#))

Synonyms GPI2

Function Part of the glycosylphosphatidylinositol-N- acetylglucosaminyltransferase (GPI-GnT)

complex that catalyzes the transfer of N-acetylglucosamine from UDP-N-acetylglucosamine to phosphatidylinositol and participates in the first step of GPI biosynthesis.

Cellular Location

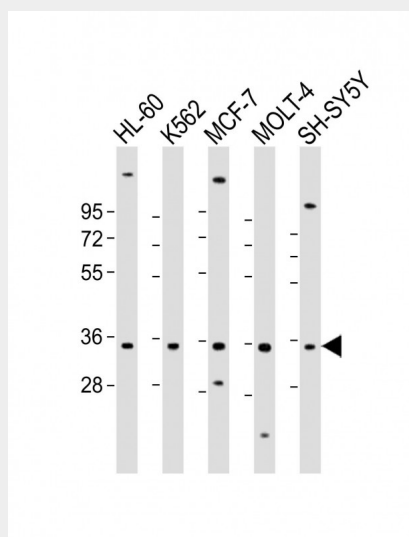
Endoplasmic reticulum membrane; Multi-pass membrane protein

PIGC Antibody (Center) - Protocols

Provided below are standard protocols that you may find useful for product applications.

- [Western Blot](#)
- [Blocking Peptides](#)
- [Dot Blot](#)
- [Immunohistochemistry](#)
- [Immunofluorescence](#)
- [Immunoprecipitation](#)
- [Flow Cytometry](#)
- [Cell Culture](#)

PIGC Antibody (Center) - Images



All lanes : Anti-PIGC Antibody (Center) at 1:2000 dilution Lane 1: HL-60 whole cell lysate Lane 2: K562 whole cell lysate Lane 3: MCF-7 whole cell lysate Lane 4: MOLT-4 whole cell lysate Lane 5: SH-SY5Y whole cell lysate Lysates/proteins at 20 μ g per lane. Secondary Goat Anti-Rabbit IgG, (H+L), Peroxidase conjugated at 1/10000 dilution. Predicted band size : 34 kDa Blocking/Dilution buffer: 5% NFDM/TBST.

PIGC Antibody (Center) - Background

Part of the complex catalyzing the transfer of N- acetylglucosamine from UDP-N-acetylglucosamine to phosphatidylinositol, the first step of GPI biosynthesis.

PIGC Antibody (Center) - References

- Inoue N.,et al.Biochem. Biophys. Res. Commun. 226:193-199(1996).
Hong Y.,et al.Genomics 44:347-349(1997).
Kalnine N.,et al.Submitted (MAY-2003) to the EMBL/GenBank/DDBJ databases.

Ebert L., et al. Submitted (MAY-2004) to the EMBL/GenBank/DDBJ databases.
Gregory S.G., et al. Nature 441:315-321(2006).