

TPM3 Antibody (C-Term)
Purified Rabbit Polyclonal Antibody (Pab)
Catalog # AP21987b

Specification

TPM3 Antibody (C-Term) - Product Information

Application	WB,E
Primary Accession	P06753
Other Accession	Q5KR49 , P04268 , P58773 , P13104 , P09493 , P84335 , P58771 , P42639 , P58772 , P13105 , P04692 , Q01173 , Q5KR47 , A1XQV4
Reactivity	Human
Predicted	Bovine, Chicken, Zebrafish, Mouse, Pig, Rabbit, Rat, Xenopus
Host	Rabbit
Clonality	polyclonal
Isotype	Rabbit IgG
Calculated MW	32950

TPM3 Antibody (C-Term) - Additional Information

Gene ID 7170

Other Names

Tropomyosin alpha-3 chain, Gamma-tropomyosin, Tropomyosin-3, Tropomyosin-5, hTM5, TPM3

Target/Specificity

This TPM3 antibody is generated from a rabbit immunized with a KLH conjugated synthetic peptide between 245-276 amino acids from the human region of human TPM3.

Dilution

WB~~1:2000

Format

Purified polyclonal antibody supplied in PBS with 0.09% (W/V) sodium azide. This antibody is purified through a protein A column, followed by peptide affinity purification.

Storage

Maintain refrigerated at 2-8°C for up to 2 weeks. For long term storage store at -20°C in small aliquots to prevent freeze-thaw cycles.

Precautions

TPM3 Antibody (C-Term) is for research use only and not for use in diagnostic or therapeutic procedures.

TPM3 Antibody (C-Term) - Protein Information

Name TPM3

Function Binds to actin filaments in muscle and non-muscle cells. Plays a central role, in association with the troponin complex, in the calcium dependent regulation of vertebrate striated muscle contraction. Smooth muscle contraction is regulated by interaction with caldesmon. In non-muscle cells is implicated in stabilizing cytoskeleton actin filaments.

Cellular Location

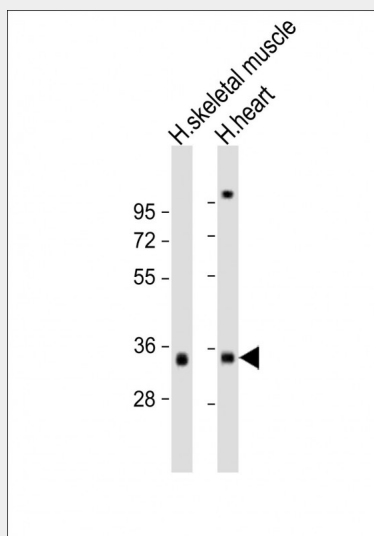
Cytoplasm, cytoskeleton.

TPM3 Antibody (C-Term) - Protocols

Provided below are standard protocols that you may find useful for product applications.

- [Western Blot](#)
- [Blocking Peptides](#)
- [Dot Blot](#)
- [Immunohistochemistry](#)
- [Immunofluorescence](#)
- [Immunoprecipitation](#)
- [Flow Cytometry](#)
- [Cell Culture](#)

TPM3 Antibody (C-Term) - Images



All lanes : Anti-TPM3 Antibody (C-Term) at 1:2000 dilution Lane 1: human skeletal muscle lysate Lane 2: human heart lysate Lysates/proteins at 20 µg per lane. Secondary Goat Anti-Rabbit IgG, (H+L), Peroxidase conjugated at 1/10000 dilution. Predicted band size : 33 kDa Blocking/Dilution buffer: 5% NFDM/TBST.

TPM3 Antibody (C-Term) - Background

Binds to actin filaments in muscle and non-muscle cells. Plays a central role, in association with the troponin complex, in the calcium dependent regulation of vertebrate striated muscle contraction. Smooth muscle contraction is regulated by interaction with caldesmon. In non-muscle cells is implicated in stabilizing cytoskeleton actin filaments.

TPM3 Antibody (C-Term) - References

Reinach F.C.,et al.Nature 322:648-650(1986).
McLeod A.R.,et al.Nucleic Acids Res. 14:8413-8426(1986).
Clayton L.,et al.J. Mol. Biol. 201:507-515(1988).
Lin J.J.-C.,et al.Submitted (JUL-2000) to the EMBL/GenBank/DDBJ databases.
Gregory S.G.,et al.Nature 441:315-321(2006).