

PHF6 Antibody (C-Term)
Purified Rabbit Polyclonal Antibody (Pab)
Catalog # AP21978b

Specification

PHF6 Antibody (C-Term) - Product Information

Application	IF, WB,E
Primary Accession	Q8IWS0
Other Accession	Q08DR0 , Q5R5Z2
Reactivity	Human
Predicted	Bovine
Host	Rabbit
Clonality	polyclonal
Isotype	Rabbit IgG
Calculated MW	41290

PHF6 Antibody (C-Term) - Additional Information

Gene ID 84295

Other Names

PHD finger protein 6, PHD-like zinc finger protein, PHF6, CENP-31, KIAA1823

Target/Specificity

This PHF6 antibody is generated from a rabbit immunized with a KLH conjugated synthetic peptide between 315-349 amino acids from human PHF6.

Dilution

IF~~1:25

WB~~1:2000

Format

Purified polyclonal antibody supplied in PBS with 0.09% (W/V) sodium azide. This antibody is purified through a protein A column, followed by peptide affinity purification.

Storage

Maintain refrigerated at 2-8°C for up to 2 weeks. For long term storage store at -20°C in small aliquots to prevent freeze-thaw cycles.

Precautions

PHF6 Antibody (C-Term) is for research use only and not for use in diagnostic or therapeutic procedures.

PHF6 Antibody (C-Term) - Protein Information

Name PHF6

Synonyms CENP-31, KIAA1823

Function Transcriptional regulator that associates with ribosomal RNA promoters and suppresses ribosomal RNA (rRNA) transcription.

Cellular Location

Nucleus. Nucleus, nucleolus. Chromosome, centromere, kinetochore. Note=Nuclear, it particularly localizes to the nucleolus

Tissue Location

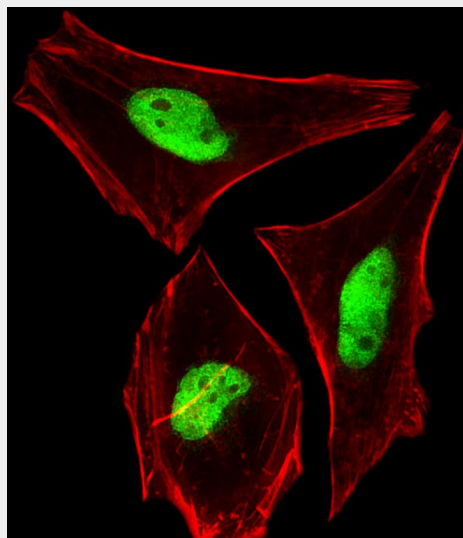
Ubiquitously expressed.

PHF6 Antibody (C-Term) - Protocols

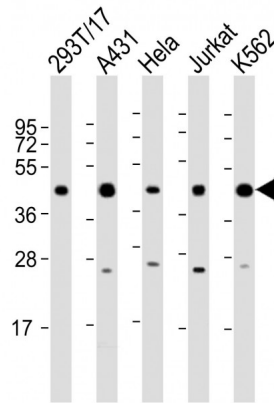
Provided below are standard protocols that you may find useful for product applications.

- [Western Blot](#)
- [Blocking Peptides](#)
- [Dot Blot](#)
- [Immunohistochemistry](#)
- [Immunofluorescence](#)
- [Immunoprecipitation](#)
- [Flow Cytometry](#)
- [Cell Culture](#)

PHF6 Antibody (C-Term) - Images



Immunofluorescent analysis of 4% paraformaldehyde-fixed, 0.1% Triton X-100 permeabilized HeLa (human cervical epithelial adenocarcinoma cell line) cells labeling PHF6 with AP21978b at 1/25 dilution, followed by Dylight® 488-conjugated goat anti-rabbit IgG (NK179883) secondary antibody at 1/200 dilution (green). Immunofluorescence image showing nucleus staining on HeLa cell line. Cytoplasmic actin is detected with Dylight® 554 Phalloidin (PD18466410) at 1/100 dilution (red).



All lanes : Anti-PHF6 Antibody (C-Term) at 1:2000 dilution Lane 1: 293T/17 whole cell lysate Lane 2: A431 whole cell lysate Lane 3: HeLa whole cell lysate Lane 4: Jurkat whole cell lysate Lane 5: K562 whole cell lysate Lysates/proteins at 20 µg per lane. Secondary Goat Anti-Rabbit IgG, (H+L), Peroxidase conjugated at 1/10000 dilution. Predicted band size : 41 kDa Blocking/Dilution buffer: 5% NFDN/TBST.

PHF6 Antibody (C-Term) - Background

Transcriptional regulator that associates with ribosomal RNA promoters and suppresses ribosomal RNA (rRNA) transcription.

PHF6 Antibody (C-Term) - References

- Lower K.M.,et al.Nat. Genet. 32:661-665(2002).
- Nagase T.,et al.DNA Res. 8:85-95(2001).
- Ota T.,et al.Nat. Genet. 36:40-45(2004).
- Ross M.T.,et al.Nature 434:325-337(2005).
- Mural R.J.,et al.Submitted (SEP-2005) to the EMBL/GenBank/DDBJ databases.