

**COL4A3 Antibody (N-Term)**  
**Purified Rabbit Polyclonal Antibody (Pab)**  
**Catalog # AP21945a**

**Specification**

---

**COL4A3 Antibody (N-Term) - Product Information**

Application	<b>WB,E</b>
Primary Accession	<a href="#">O01955</a>
Reactivity	<b>Human</b>
Host	<b>Rabbit</b>
Clonality	<b>polyclonal</b>
Isotype	<b>Rabbit IgG</b>
Calculated MW	<b>161813</b>

**COL4A3 Antibody (N-Term) - Additional Information**

**Gene ID** 1285

**Other Names**

Collagen alpha-3(IV) chain, Goodpasture antigen, Tumstatin, COL4A3

**Target/Specificity**

This COL4A3 antibody is generated from a rabbit immunized with a KLH conjugated synthetic peptide between 141-173 amino acids from human COL4A3.

**Dilution**

WB~~1:1000

**Format**

Purified polyclonal antibody supplied in PBS with 0.09% (W/V) sodium azide. This antibody is purified through a protein A column, followed by peptide affinity purification.

**Storage**

Maintain refrigerated at 2-8°C for up to 2 weeks. For long term storage store at -20°C in small aliquots to prevent freeze-thaw cycles.

**Precautions**

COL4A3 Antibody (N-Term) is for research use only and not for use in diagnostic or therapeutic procedures.

**COL4A3 Antibody (N-Term) - Protein Information**

**Name** COL4A3

**Function** Type IV collagen is the major structural component of glomerular basement membranes (GBM), forming a 'chicken-wire' meshwork together with laminins, proteoglycans and entactin/nidogen.

### Cellular Location

Secreted, extracellular space, extracellular matrix, basement membrane. Note=Colocalizes with COL4A4 and COL4A5 in GBM, tubular basement membrane (TBM) and synaptic basal lamina (BL)

### Tissue Location

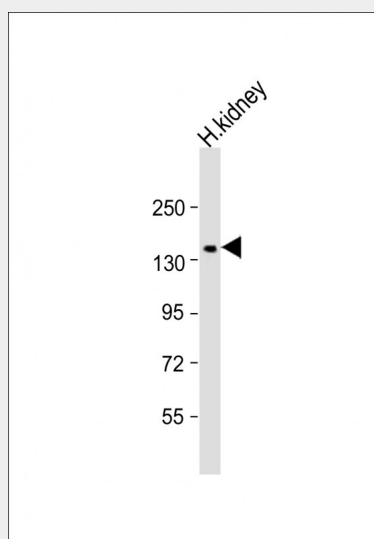
Alpha 3 and alpha 4 type IV collagens are colocalized and present in kidney, eye, basement membranes of lens capsule, cochlea, lung, skeletal muscle, aorta, synaptic fibers, fetal kidney and fetal lung. PubMed:8083201 reports similar levels of expression of alpha 3 and alpha 4 type IV collagens in kidney, but PubMed:7523402 reports that in kidney levels of alpha 3 type IV collagen are significantly lower than those of alpha 4 type IV collagen. According to PubMed:8083201, alpha 3 type IV collagen is not detected in heart, brain, placenta, liver, pancreas, extrasynaptic muscle fibers, endoneurial and perineurial nerves, fetal brain, fetal heart and fetal liver. According to PubMed:7523402, alpha 3 type IV collagen is strongly expressed in pancreas, neuroretina and calvaria and not expressed in adrenal, ileum and skin. Isoform 1 and isoform 3 are strongly expressed in kidney, lung, suprarenal capsule, muscle and spleen, in each of these tissues isoform 1 is more abundant than isoform 3. Isoform 1 and isoform 3 are expressed at low levels in artery, fat, pericardium and peripheral nerve, but not in placenta, mesangium, skin, pleura and cultured umbilical endothelial cells

### COL4A3 Antibody (N-Term) - Protocols

Provided below are standard protocols that you may find useful for product applications.

- [Western Blot](#)
- [Blocking Peptides](#)
- [Dot Blot](#)
- [Immunohistochemistry](#)
- [Immunofluorescence](#)
- [Immunoprecipitation](#)
- [Flow Cytometry](#)
- [Cell Culture](#)

### COL4A3 Antibody (N-Term) - Images



Anti-COL4A3 Antibody (N-Term) at 1:1000 dilution + kidney lysate Lysates/proteins at 20 µg per lane. Secondary Goat Anti-Rabbit IgG, (H+L), Peroxidase conjugated at 1/10000 dilution. Predicted band size : 162 kDa Blocking/Dilution buffer: 5% NFDN/TBST.

**COL4A3 Antibody (N-Term) - Background**

Type IV collagen is the major structural component of glomerular basement membranes (GBM), forming a 'chicken-wire' meshwork together with laminins, proteoglycans and entactin/nidogen.

**COL4A3 Antibody (N-Term) - References**

Mariyama M.,et al.J. Biol. Chem. 269:23013-23017(1994).  
Leinonen A.,et al.Submitted (OCT-1998) to the EMBL/GenBank/DDBJ databases.  
Heidet L.,et al.J. Am. Soc. Nephrol. 12:97-106(2001).  
Hillier L.W.,et al.Nature 434:724-731(2005).  
Momota R.,et al.FEBS Lett. 424:11-16(1998).