

ARHGEF39 Antibody (Center)
Purified Rabbit Polyclonal Antibody (Pab)
Catalog # AP21928c

Specification

ARHGEF39 Antibody (Center) - Product Information

Application	WB,E
Primary Accession	Q8N4T4
Reactivity	Human
Host	Rabbit
Clonality	polyclonal
Isotype	Rabbit IgG

ARHGEF39 Antibody (Center) - Additional Information

Gene ID 84904

Other Names

Rho guanine nucleotide exchange factor 39, ARHGEF39, C9orf100

Target/Specificity

This ARHGEF39 antibody is generated from a rabbit immunized with a KLH conjugated synthetic peptide between 180-211 amino acids from the Central region of human ARHGEF39. .

Dilution

WB~~1:2000

Format

Purified polyclonal antibody supplied in PBS with 0.09% (W/V) sodium azide. This antibody is purified through a protein A column, followed by peptide affinity purification.

Storage

Maintain refrigerated at 2-8°C for up to 2 weeks. For long term storage store at -20°C in small aliquots to prevent freeze-thaw cycles.

Precautions

ARHGEF39 Antibody (Center) is for research use only and not for use in diagnostic or therapeutic procedures.

ARHGEF39 Antibody (Center) - Protein Information

Name ARHGEF39

Synonyms C9orf100

Function Promotes cell proliferation.

Cellular Location

Cell membrane.

Tissue Location

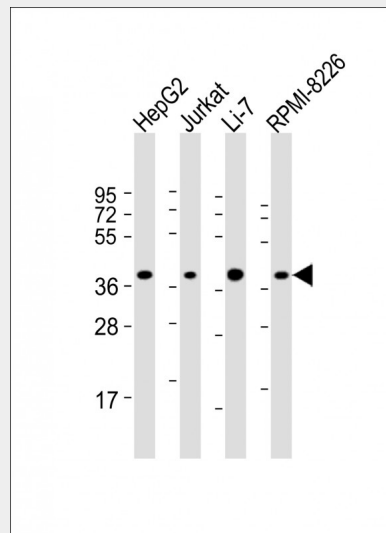
Strongly expressed in hepatocellular carcinoma (HCC) compared with their non-cancerous counterparts

ARHGEF39 Antibody (Center) - Protocols

Provided below are standard protocols that you may find useful for product applications.

- [Western Blot](#)
- [Blocking Peptides](#)
- [Dot Blot](#)
- [Immunohistochemistry](#)
- [Immunofluorescence](#)
- [Immunoprecipitation](#)
- [Flow Cytometry](#)
- [Cell Culture](#)

ARHGEF39 Antibody (Center) - Images



All lanes : Anti-C9orf100 Antibody (Center) at 1:2000 dilution Lane 1: HepG2 whole cell lysate Lane 2: Jurkat whole cell lysate Lane 3: Li-7 whole cell lysate Lane 4: RPMI-8226 whole cell lysate Lysates/proteins at 20 µg per lane. Secondary Goat Anti-Rabbit IgG, (H+L), Peroxidase conjugated at 1/10000 dilution. Predicted band size : 38 kDa Blocking/Dilution buffer: 5% NFD/MTBST.

ARHGEF39 Antibody (Center) - Background

Promotes cell proliferation.

ARHGEF39 Antibody (Center) - References

- Makela H.M.A.,et al.Submitted (SEP-2003) to the EMBL/GenBank/DDBJ databases.
Ota T.,et al.Nat. Genet. 36:40-45(2004).
Humphray S.J.,et al.Nature 429:369-374(2004).
Wang H.,et al.Mol. Med. Report. 5:1169-1174(2012).