

RPL14 Antibody (C-Term)
Purified Rabbit Polyclonal Antibody (Pab)
Catalog # AP21924b

Specification

RPL14 Antibody (C-Term) - Product Information

Application	WB,E
Primary Accession	P50914
Reactivity	Human
Host	Rabbit
Clonality	polyclonal
Isotype	Rabbit IgG
Calculated MW	23432

RPL14 Antibody (C-Term) - Additional Information

Gene ID 9045

Other Names

60S ribosomal protein L14, CAG-ISL 7, RPL14

Target/Specificity

This RPL14 antibody is generated from a rabbit immunized with a KLH conjugated synthetic peptide between 173-204 amino acids from human RPL14.

Dilution

WB~~1:2000

Storage

Maintain refrigerated at 2-8°C for up to 2 weeks. For long term storage store at -20°C in small aliquots to prevent freeze-thaw cycles.

Precautions

RPL14 Antibody (C-Term) is for research use only and not for use in diagnostic or therapeutic procedures.

RPL14 Antibody (C-Term) - Protein Information

Name RPL14

Function Component of the large ribosomal subunit (PubMed:[12962325](#), PubMed:[23636399](#), PubMed:[32669547](#)). The ribosome is a large ribonucleoprotein complex responsible for the synthesis of proteins in the cell (PubMed:[12962325](#), PubMed:[23636399](#), PubMed:[32669547](#)).

Cellular Location

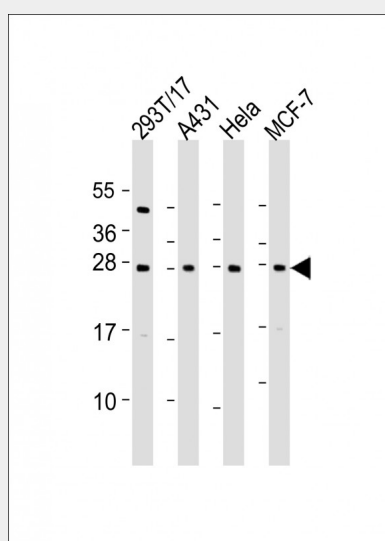
Cytoplasm.

RPL14 Antibody (C-Term) - Protocols

Provided below are standard protocols that you may find useful for product applications.

- [Western Blot](#)
- [Blocking Peptides](#)
- [Dot Blot](#)
- [Immunohistochemistry](#)
- [Immunofluorescence](#)
- [Immunoprecipitation](#)
- [Flow Cytometry](#)
- [Cell Culture](#)

RPL14 Antibody (C-Term) - Images



All lanes : Anti-RPL14 Antibody (C-Term) at 1:2000 dilution Lane 1: 293T/17 whole cell lysate Lane 2: A431 whole cell lysate Lane 3: HeLa whole cell lysate Lane 4: MCF-7 whole cell lysate Lysates/proteins at 20 µg per lane. Secondary Goat Anti-Rabbit IgG, (H+L), Peroxidase conjugated at 1/10000 dilution. Predicted band size : 23 kDa Blocking/Dilution buffer: 5% NFDM/TBST.

RPL14 Antibody (C-Term) - References

- Aoki M., et al. *Diabetes* 45:157-164(1996).
Tanaka M., et al. *Biochem. Biophys. Res. Commun.* 243:531-537(1998).
Yoshihama M., et al. *Genome Res.* 12:379-390(2002).
Lin L., et al. Submitted (JUL-2005) to the EMBL/GenBank/DDBJ databases.
Suzuki Y., et al. Submitted (APR-2005) to the EMBL/GenBank/DDBJ databases.