

**MYBL2 Antibody (Center)**  
**Purified Rabbit Polyclonal Antibody (Pab)**  
**Catalog # AP21915c**

**Specification**

---

**MYBL2 Antibody (Center) - Product Information**

Application	WB,E
Primary Accession	<a href="#">P10244</a>
Reactivity	Human
Host	Rabbit
Clonality	polyclonal
Isotype	Rabbit IgG
Calculated MW	78764

**MYBL2 Antibody (Center) - Additional Information**

**Gene ID** 4605

**Other Names**

Myb-related protein B, B-Myb, Myb-like protein 2, MYBL2, BMYB

**Target/Specificity**

This MYBL2 antibody is generated from a rabbit immunized with a KLH conjugated synthetic peptide between 245-278 amino acids from the Central region of human MYBL2.

**Dilution**

WB~~1:2000

**Format**

Purified polyclonal antibody supplied in PBS with 0.09% (W/V) sodium azide. This antibody is purified through a protein A column, followed by peptide affinity purification.

**Storage**

Maintain refrigerated at 2-8°C for up to 2 weeks. For long term storage store at -20°C in small aliquots to prevent freeze-thaw cycles.

**Precautions**

MYBL2 Antibody (Center) is for research use only and not for use in diagnostic or therapeutic procedures.

**MYBL2 Antibody (Center) - Protein Information**

**Name** MYBL2

**Synonyms** BMYB

**Function** Transcription factor involved in the regulation of cell survival, proliferation, and differentiation. Transactivates the expression of the CLU gene.

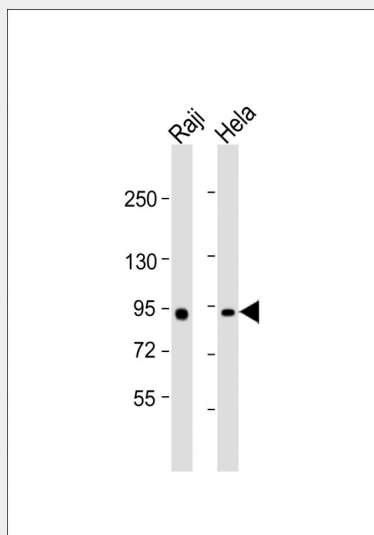
**Cellular Location**

Nucleus.

**MYBL2 Antibody (Center) - Protocols**

Provided below are standard protocols that you may find useful for product applications.

- [Western Blot](#)
- [Blocking Peptides](#)
- [Dot Blot](#)
- [Immunohistochemistry](#)
- [Immunofluorescence](#)
- [Immunoprecipitation](#)
- [Flow Cytometry](#)
- [Cell Culture](#)

**MYBL2 Antibody (Center) - Images**

All lanes : Anti-MYBL2 Antibody (Center) at 1:2000 dilution Lane 1: Raji whole cell lysate Lane 2: HeLa whole cell lysate Lysates/proteins at 20 µg per lane. Secondary Goat Anti-Rabbit IgG, (H+L), Peroxidase conjugated at 1/10000 dilution. Predicted band size : 79 kDa Blocking/Dilution buffer: 5% NFDM/TBST.

**MYBL2 Antibody (Center) - Background**

Transcription factor involved in the regulation of cell survival, proliferation, and differentiation. Transactivates the expression of the CLU gene.

**MYBL2 Antibody (Center) - References**

- Nomura N., et al. *Nucleic Acids Res.* 16:11075-11089(1988).  
Ota T., et al. *Nat. Genet.* 36:40-45(2004).  
Totoki Y., et al. Submitted (APR-2005) to the EMBL/GenBank/DDBJ databases.  
Deloukas P., et al. *Nature* 414:865-871(2001).  
Mural R.J., et al. Submitted (SEP-2005) to the EMBL/GenBank/DDBJ databases.