

SKI Antibody (N-Term)
Purified Rabbit Polyclonal Antibody (Pab)
Catalog # AP21908a

Specification

SKI Antibody (N-Term) - Product Information

Application	WB,E
Primary Accession	P12755
Other Accession	Q9TUG2
Reactivity	Human
Predicted	Horse
Host	Rabbit
Clonality	polyclonal
Isotype	Rabbit IgG
Calculated MW	80005

SKI Antibody (N-Term) - Additional Information

Gene ID 6497

Other Names

Ski oncogene, Proto-oncogene c-Ski, SKI

Target/Specificity

This SKI antibody is generated from a rabbit immunized with a KLH conjugated synthetic peptide between 21-54 amino acids from human SKI.

Dilution

WB~~1:2000

Format

Purified polyclonal antibody supplied in PBS with 0.09% (W/V) sodium azide. This antibody is purified through a protein A column, followed by peptide affinity purification.

Storage

Maintain refrigerated at 2-8°C for up to 2 weeks. For long term storage store at -20°C in small aliquots to prevent freeze-thaw cycles.

Precautions

SKI Antibody (N-Term) is for research use only and not for use in diagnostic or therapeutic procedures.

SKI Antibody (N-Term) - Protein Information

Name SKI

Function May play a role in terminal differentiation of skeletal muscle cells but not in the determination of cells to the myogenic lineage. Functions as a repressor of TGF-beta signaling.

Cellular Location

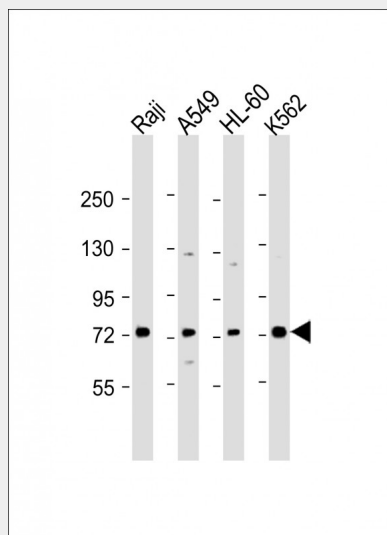
Nucleus.

SKI Antibody (N-Term) - Protocols

Provided below are standard protocols that you may find useful for product applications.

- [Western Blot](#)
- [Blocking Peptides](#)
- [Dot Blot](#)
- [Immunohistochemistry](#)
- [Immunofluorescence](#)
- [Immunoprecipitation](#)
- [Flow Cytometry](#)
- [Cell Culture](#)

SKI Antibody (N-Term) - Images



All lanes : Anti-SKI Antibody (N-Term) at 1:2000 dilution Lane 1: Raji whole cell lysate Lane 2: A549 whole cell lysate Lane 3: HL-60 whole cell lysate Lane 4: K562 whole cell lysate Lysates/proteins at 20 µg per lane. Secondary Goat Anti-Rabbit IgG, (H+L), Peroxidase conjugated at 1/10000 dilution. Predicted band size : 80 kDa Blocking/Dilution buffer: 5% NFDN/TBST.

SKI Antibody (N-Term) - Background

May play a role in terminal differentiation of skeletal muscle cells but not in the determination of cells to the myogenic lineage. Functions as a repressor of TGF-beta signaling.

SKI Antibody (N-Term) - References

- Nomura N., et al. *Nucleic Acids Res.* 17:5489-5500(1989).
Gregory S.G., et al. *Nature* 441:315-321(2006).
Harada J., et al. *J. Biol. Chem.* 278:38998-39005(2003).
Gauci S., et al. *Anal. Chem.* 81:4493-4501(2009).
Takahata M., et al. *J. Biol. Chem.* 284:3334-3344(2009).