

FGFR10P Antibody (Center)
Purified Rabbit Polyclonal Antibody (Pab)
Catalog # AP21889c

Specification

FGFR10P Antibody (Center) - Product Information

| | |
|-------------------|------------------------|
| Application | WB,E |
| Primary Accession | O95684 |
| Other Accession | Q4R7V3 |
| Reactivity | Human |
| Host | Rabbit |
| Clonality | polyclonal |
| Isotype | Rabbit IgG |
| Calculated MW | 43065 |
| Antigen Region | 183-214 |

FGFR10P Antibody (Center) - Additional Information

Gene ID 11116

Other Names

FGFR1 oncogene partner, FGFR10P, FOP

Target/Specificity

This FGFR10P antibody is generated from a rabbit immunized with a KLH conjugated synthetic peptide between 183-214 amino acids from the Central region of human FGFR10P.

Dilution

WB~~1:1000-1:2000

Format

Purified polyclonal antibody supplied in PBS with 0.09% (W/V) sodium azide. This antibody is purified through a protein A column, followed by peptide affinity purification.

Storage

Maintain refrigerated at 2-8°C for up to 2 weeks. For long term storage store at -20°C in small aliquots to prevent freeze-thaw cycles.

Precautions

FGFR10P Antibody (Center) is for research use only and not for use in diagnostic or therapeutic procedures.

FGFR10P Antibody (Center) - Protein Information

Name CEP43 ([HGNC:17012](#))

Synonyms FGFR10P, FOP

Function Required for anchoring microtubules to the centrosomes (PubMed:[16314388](#), PubMed:[28659385](#)). Required for ciliation (PubMed:[28625565](#), PubMed:[28659385](#)).

Cellular Location

Cytoplasm, cytoskeleton, microtubule organizing center, centrosome. Cytoplasm, cytoskeleton, microtubule organizing center, centrosome, centriole. Cytoplasm, cytoskeleton, cilium basal body Note=Associated with gamma-tubulin (PubMed:16314388). Localizes on both mother and daughter centrioles (PubMed:28428259, PubMed:28625565) Localizes to an axial position on the mother centriole (PubMed:28625565). Localizes to the distal end of the centriole partly on the subdistal appendage region (PubMed:28659385)

Tissue Location

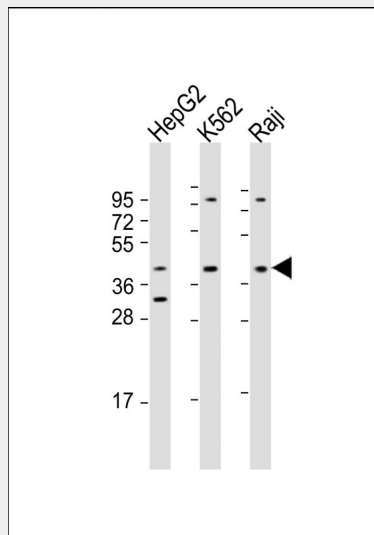
Ubiquitous. Highly expressed in heart, liver, muscle, kidney, intestine, colon, adrenal gland, prostate, testis, and pancreas.

FGFR1OP Antibody (Center) - Protocols

Provided below are standard protocols that you may find useful for product applications.

- [Western Blot](#)
- [Blocking Peptides](#)
- [Dot Blot](#)
- [Immunohistochemistry](#)
- [Immunofluorescence](#)
- [Immunoprecipitation](#)
- [Flow Cytometry](#)
- [Cell Culture](#)

FGFR1OP Antibody (Center) - Images



All lanes : Anti-FGFR1OP Antibody (Center) at 1:1000-1:2000 dilution Lane 1: HepG2 whole cell lysate Lane 2: K562 whole cell lysate Lane 3: Raji whole cell lysate Lysates/proteins at 20 µg per lane. Secondary Goat Anti-Rabbit IgG, (H+L), Peroxidase conjugated at 1/10000 dilution. Predicted band size : 43 kDa Blocking/Dilution buffer: 5% NFD/DM/TBST.

FGFR1OP Antibody (Center) - Background

Required for anchoring microtubules to the centrosomes.

FGFR1OP Antibody (Center) - References

Popovici C., et al. Blood 93:1381-1389(1999).

Ota T., et al. Nat. Genet. 36:40-45(2004).

Mungall A.J., et al. Nature 425:805-811(2003).

Mural R.J., et al. Submitted (SEP-2005) to the EMBL/GenBank/DDBJ databases.

Andersen J.S., et al. Nature 426:570-574(2003).