

RPL7A Antibody (C-Term)
Purified Rabbit Polyclonal Antibody (Pab)
Catalog # AP21883b

Specification

RPL7A Antibody (C-Term) - Product Information

Application	WB,E
Primary Accession	P62424
Other Accession	Q2TBO5 , Q4R5C2 , P12970 , P62425 , G1STW0
Reactivity	Human, Mouse, Rat
Predicted	Bovine, Monkey, Rabbit
Host	Rabbit
Clonality	polyclonal
Isotype	Rabbit IgG
Calculated MW	29996

RPL7A Antibody (C-Term) - Additional Information

Gene ID 6130

Other Names

60S ribosomal protein L7a, PLA-X polypeptide, Surfeit locus protein 3, RPL7A, SURF-3, SURF3

Target/Specificity

This RPL7A antibody is generated from a rabbit immunized with a KLH conjugated synthetic peptide between 200-235 amino acids from human RPL7A.

Dilution

WB~~1:2000

Format

Purified polyclonal antibody supplied in PBS with 0.09% (W/V) sodium azide. This antibody is purified through a protein A column, followed by peptide affinity purification.

Storage

Maintain refrigerated at 2-8°C for up to 2 weeks. For long term storage store at -20°C in small aliquots to prevent freeze-thaw cycles.

Precautions

RPL7A Antibody (C-Term) is for research use only and not for use in diagnostic or therapeutic procedures.

RPL7A Antibody (C-Term) - Protein Information

Name RPL7A

Synonyms SURF-3, SURF3

Function Component of the large ribosomal subunit (PubMed:[23636399](#), PubMed:[32669547](#)). The ribosome is a large ribonucleoprotein complex responsible for the synthesis of proteins in the cell (PubMed:[23636399](#), PubMed:[32669547](#)).

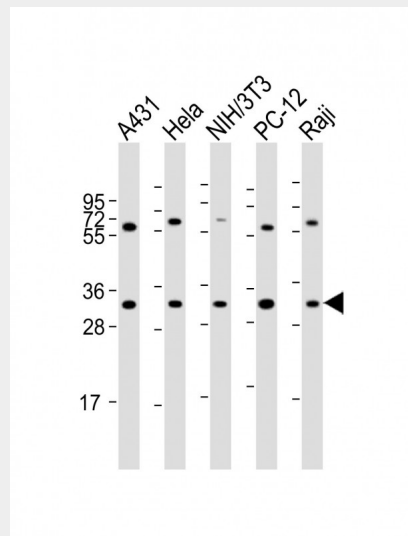
Cellular Location
Cytoplasm.

RPL7A Antibody (C-Term) - Protocols

Provided below are standard protocols that you may find useful for product applications.

- [Western Blot](#)
- [Blocking Peptides](#)
- [Dot Blot](#)
- [Immunohistochemistry](#)
- [Immunofluorescence](#)
- [Immunoprecipitation](#)
- [Flow Cytometry](#)
- [Cell Culture](#)

RPL7A Antibody (C-Term) - Images



All lanes : Anti-RPL7A Antibody (C-Term) at 1:2000 dilution Lane 1: A431 whole cell lysate Lane 2: HeLa whole cell lysate Lane 3: NIH/3T3 whole cell lysate Lane 4: PC-12 whole cell lysate Lane 5: Raji whole cell lysate Lysates/proteins at 20 µg per lane. Secondary Goat Anti-Rabbit IgG, (H+L), Peroxidase conjugated at 1/10000 dilution. Predicted band size : 30 kDa Blocking/Dilution buffer: 5% NFDM/TBST.

RPL7A Antibody (C-Term) - References

- Kozma S.C.,et al.EMBO J. 7:147-154(1988).
Colombo P.,et al.Biochim. Biophys. Acta 1129:93-95(1991).
De Falco S.,et al.Gene 126:227-235(1993).
Ben-Ishai R.,et al.Proc. Natl. Acad. Sci. U.S.A. 87:6039-6043(1990).
Ota T.,et al.Nat. Genet. 36:40-45(2004).