

CHRNA4 Antibody (N-Term)
Purified Rabbit Polyclonal Antibody (Pab)
Catalog # AP21830a

Specification

CHRNA4 Antibody (N-Term) - Product Information

Application	WB,E
Primary Accession	P43681
Reactivity	Human, Mouse
Host	Rabbit
Clonality	polyclonal
Isotype	Rabbit IgG
Calculated MW	69957

CHRNA4 Antibody (N-Term) - Additional Information

Gene ID 1137

Other Names

Neuronal acetylcholine receptor subunit alpha-4, CHRNA4, NACRA4

Target/Specificity

This CHRNA4 antibody is generated from a rabbit immunized with a KLH conjugated synthetic peptide between 176-208 amino acids from human CHRNA4.

Dilution

WB~~1:2000

Format

Purified polyclonal antibody supplied in PBS with 0.09% (W/V) sodium azide. This antibody is purified through a protein A column, followed by peptide affinity purification.

Storage

Maintain refrigerated at 2-8°C for up to 2 weeks. For long term storage store at -20°C in small aliquots to prevent freeze-thaw cycles.

Precautions

CHRNA4 Antibody (N-Term) is for research use only and not for use in diagnostic or therapeutic procedures.

CHRNA4 Antibody (N-Term) - Protein Information

Name CHRNA4

Synonyms NACRA4

Function After binding acetylcholine, the AChR responds by an extensive change in conformation that affects all subunits and leads to opening of an ion-conducting channel across the plasma

membrane permeable to sodium ions.

Cellular Location

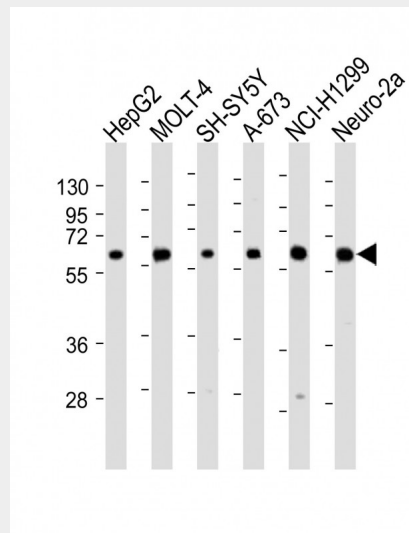
Postsynaptic cell membrane; Multi-pass membrane protein. Cell membrane; Multi-pass membrane protein. Cell membrane; Lipid-anchor

CHRNA4 Antibody (N-Term) - Protocols

Provided below are standard protocols that you may find useful for product applications.

- [Western Blot](#)
- [Blocking Peptides](#)
- [Dot Blot](#)
- [Immunohistochemistry](#)
- [Immunofluorescence](#)
- [Immunoprecipitation](#)
- [Flow Cytometry](#)
- [Cell Culture](#)

CHRNA4 Antibody (N-Term) - Images



All lanes : Anti-CHRNA4 Antibody (N-Term) at 1:2000 dilution Lane 1: HepG2 whole cell lysate Lane 2: MOLT-4 whole cell lysate Lane 3: SH-SY5Y whole cell lysate Lane 4: A-673 whole cell lysate Lane 5: NCI-H1299 whole cell lysate Lane 6: Neuro-2a whole cell lysate Lysates/proteins at 20 µg per lane. Secondary Goat Anti-Rabbit IgG, (H+L), Peroxidase conjugated at 1/10000 dilution. Predicted band size : 70 kDa Blocking/Dilution buffer: 5% NFDM/TBST.

CHRNA4 Antibody (N-Term) - Background

After binding acetylcholine, the AChR responds by an extensive change in conformation that affects all subunits and leads to opening of an ion-conducting channel across the plasma membrane permeable to sodium ions.

CHRNA4 Antibody (N-Term) - References

Monteggia L.M., et al. Gene 155:189-193(1995).
Steinlein O.K., et al. Genomics 32:289-294(1996).

Elliott K.J., et al. J. Mol. Neurosci. 7:217-228(1996).
Groot Kormelink P.J., et al. FEBS Lett. 400:309-314(1997).
Deloukas P., et al. Nature 414:865-871(2001).