

**HUMAN-LDHB(Y240)**  
**Purified Rabbit Polyclonal Antibody (Pab)**  
**Catalog # AP21816a**

**Specification**

---

**HUMAN-LDHB(Y240) - Product Information**

Application	WB,E
Primary Accession	<a href="#">P07195</a>
Reactivity	Human, Mouse
Host	Rabbit
Clonality	polyclonal
Isotype	Rabbit IgG

**HUMAN-LDHB(Y240) - Additional Information**

**Gene ID** 3945

**Other Names**

L-lactate dehydrogenase B chain, LDH-B, LDH heart subunit, LDH-H, Renal carcinoma antigen NY-REN-46, LDHB

**Target/Specificity**

This antibody is generated from a rabbit immunized with a KLH conjugated synthetic peptide between 220-250 amino acids of human.

**Dilution**

WB~~1:2000

**Format**

Purified polyclonal antibody supplied in PBS with 0.09% (W/V) sodium azide. This antibody is purified through a protein A column, followed by peptide affinity purification.

**Storage**

Maintain refrigerated at 2-8°C for up to 2 weeks. For long term storage store at -20°C in small aliquots to prevent freeze-thaw cycles.

**Precautions**

HUMAN-LDHB(Y240) is for research use only and not for use in diagnostic or therapeutic procedures.

**HUMAN-LDHB(Y240) - Protein Information**

**Name** LDHB

**Function** Interconverts simultaneously and stereospecifically pyruvate and lactate with concomitant interconversion of NADH and NAD(+).

**Cellular Location**

Cytoplasm. Mitochondrion inner membrane; Peripheral membrane protein

#### Tissue Location

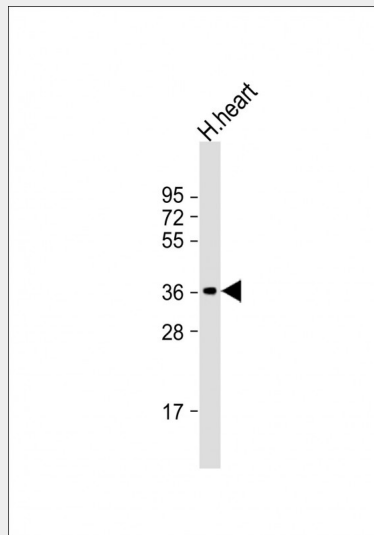
Predominantly expressed in aerobic tissues such as cardiac muscle.

#### HUMAN-LDHB(Y240) - Protocols

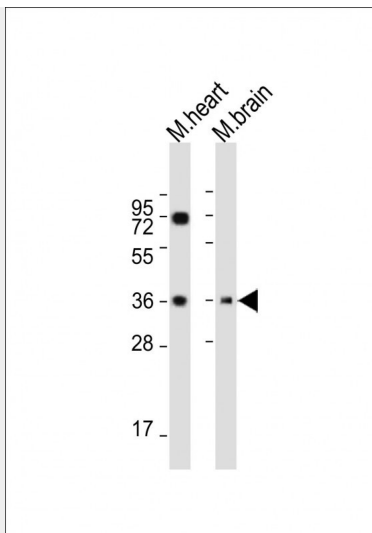
Provided below are standard protocols that you may find useful for product applications.

- [Western Blot](#)
- [Blocking Peptides](#)
- [Dot Blot](#)
- [Immunohistochemistry](#)
- [Immunofluorescence](#)
- [Immunoprecipitation](#)
- [Flow Cytometry](#)
- [Cell Culture](#)

#### HUMAN-LDHB(Y240) - Images



Anti-LDHB Antibody (Y240) at 1:2000 dilution + human heart lysate Lysates/proteins at 20 µg per lane. Secondary Goat Anti-Rabbit IgG, (H+L), Peroxidase conjugated at 1/10000 dilution. Predicted band size : 37 kDa Blocking/Dilution buffer: 5% NFDM/TBST.



All lanes : Anti-HUMAN-LDHB(Y240) at 1:2000 dilution Lane 1: Mouse heart whole cell lysate Lane 2: Mouse brain whole cell lysate Lysates/proteins at 20 µg per lane. Secondary Goat Anti-Rabbit IgG, (H+L), Peroxidase conjugated at 1/10000 dilution. Predicted band size : 37 kDa Blocking/Dilution buffer: 5% NFDN/TBST.

#### **HUMAN-LDHB(Y240) - References**

Takeno T.,et al.Biochem. J. 257:921-924(1989).  
Sakai I.,et al.Biochem. J. 248:933-936(1987).  
Bienvenut W.V.,et al.Submitted (MAY-2005) to UniProtKB.  
Lubec G.,et al.Submitted (DEC-2008) to UniProtKB.  
Scanlan M.J.,et al.Int. J. Cancer 83:456-464(1999).

#### **HUMAN-LDHB(Y240) - Citations**

- [LXR/RXR pathway signaling associated with triple-negative breast cancer in African American women.](#)