

**NDUFB3 Antibody (N-Term)**  
**Purified Rabbit Polyclonal Antibody (Pab)**  
**Catalog # AP21777a**

**Specification**

---

**NDUFB3 Antibody (N-Term) - Product Information**

Application	WB,E
Primary Accession	<a href="#">O43676</a>
Reactivity	Human, Mouse
Host	Rabbit
Clonality	polyclonal
Isotype	Rabbit IgG
Calculated MW	11402

**NDUFB3 Antibody (N-Term) - Additional Information**

**Gene ID** 4709

**Other Names**

NADH dehydrogenase [ubiquinone] 1 beta subcomplex subunit 3, Complex I-B12, CI-B12, NADH-ubiquinone oxidoreductase B12 subunit, NDUFB3

**Target/Specificity**

This NDUFB3 antibody is generated from a rabbit immunized with a KLH conjugated synthetic peptide between 13-45 amino acids from human NDUFB3.

**Dilution**

WB~~1:2000

**Format**

Purified polyclonal antibody supplied in PBS with 0.09% (W/V) sodium azide. This antibody is purified through a protein A column, followed by peptide affinity purification.

**Storage**

Maintain refrigerated at 2-8°C for up to 2 weeks. For long term storage store at -20°C in small aliquots to prevent freeze-thaw cycles.

**Precautions**

NDUFB3 Antibody (N-Term) is for research use only and not for use in diagnostic or therapeutic procedures.

**NDUFB3 Antibody (N-Term) - Protein Information**

**Name** NDUFB3

**Function** Accessory subunit of the mitochondrial membrane respiratory chain NADH dehydrogenase (Complex I), that is believed not to be involved in catalysis. Complex I functions in the transfer of electrons from NADH to the respiratory chain. The immediate electron acceptor for

the enzyme is believed to be ubiquinone.

#### Cellular Location

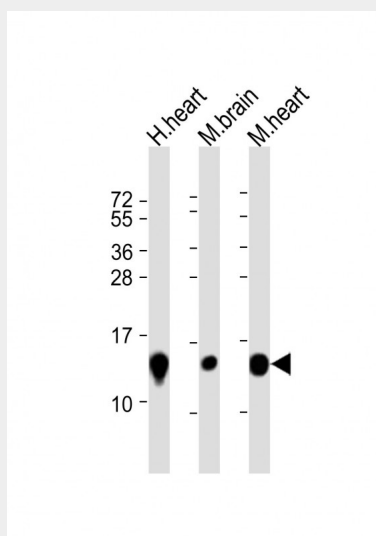
Mitochondrion inner membrane; Single-pass membrane protein; Matrix side

#### NDUFB3 Antibody (N-Term) - Protocols

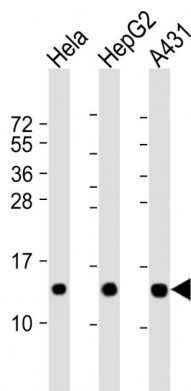
Provided below are standard protocols that you may find useful for product applications.

- [Western Blot](#)
- [Blocking Peptides](#)
- [Dot Blot](#)
- [Immunohistochemistry](#)
- [Immunofluorescence](#)
- [Immunoprecipitation](#)
- [Flow Cytometry](#)
- [Cell Culture](#)

#### NDUFB3 Antibody (N-Term) - Images



All lanes : Anti-NDUFB3 Antibody (N-Term) at 1:8000 dilution Lane 1: human heart lysate Lane 2: mouse brain lysate Lane 3: mouse heart lysate Lysates/proteins at 20 µg per lane. Secondary Goat Anti-Rabbit IgG, (H+L), Peroxidase conjugated at 1/10000 dilution. Predicted band size : 11 kDa Blocking/Dilution buffer: 5% NFDN/TBST.



All lanes : Anti-NDUFB3 Antibody (N-Term) at 1:2000 dilution Lane 1: HeLa whole cell lysate Lane 2: HepG2 whole cell lysate Lane 3: A431 whole cell lysate Lysates/proteins at 20 µg per lane. Secondary Goat Anti-Rabbit IgG, (H+L), Peroxidase conjugated at 1/10000 dilution. Predicted band size : 11kDa Blocking/Dilution buffer: 5% NFDM/TBST.

#### **NDUFB3 Antibody (N-Term) - Background**

Accessory subunit of the mitochondrial membrane respiratory chain NADH dehydrogenase (Complex I), that is believed not to be involved in catalysis. Complex I functions in the transfer of electrons from NADH to the respiratory chain. The immediate electron acceptor for the enzyme is believed to be ubiquinone.

#### **NDUFB3 Antibody (N-Term) - References**

Ton C., et al. *Biochem. Biophys. Res. Commun.* 241:589-594(1997).  
 Loeffen J.L.C.M., et al. *Biochem. Biophys. Res. Commun.* 253:415-422(1998).  
 Ebert L., et al. Submitted (JUN-2004) to the EMBL/GenBank/DDBJ databases.  
 Hillier L.W., et al. *Nature* 434:724-731(2005).  
 Mural R.J., et al. Submitted (JUL-2005) to the EMBL/GenBank/DDBJ databases.