

**Zebrafish wnt8a Antibody (Center)**  
**Purified Rabbit Polyclonal Antibody (Pab)**  
**Catalog # AP21770c**

## Specification

---

### Zebrafish wnt8a Antibody (Center) - Product Information

Application	WB,E
Primary Accession	<a href="#">P51028</a>
Reactivity	Zebrafish
Host	Rabbit
Clonality	polyclonal
Isotype	Rabbit IgG
Calculated MW	40289
Antigen Region	135-170

### Zebrafish wnt8a Antibody (Center) - Additional Information

**Gene ID** 30122

#### Other Names

Protein Wnt-8a, wnt8a, wnt-8, wnt8

#### Target/Specificity

This Zebrafish wnt8a antibody is generated from a rabbit immunized with a KLH conjugated synthetic peptide between 135-170 amino acids from the Central region of Zebrafish wnt8a.

#### Dilution

WB~~1:1000-1:2000

#### Format

Purified polyclonal antibody supplied in PBS with 0.09% (W/V) sodium azide. This antibody is purified through a protein A column, followed by peptide affinity purification.

#### Storage

Maintain refrigerated at 2-8°C for up to 2 weeks. For long term storage store at -20°C in small aliquots to prevent freeze-thaw cycles.

#### Precautions

Zebrafish wnt8a Antibody (Center) is for research use only and not for use in diagnostic or therapeutic procedures.

### Zebrafish wnt8a Antibody (Center) - Protein Information

**Name** wnt8a

**Synonyms** wnt-8, wnt8

**Function** Ligand for members of the frizzled family of seven transmembrane receptors (Probable).

Required for mesoderm and neural ectoderm patterning during gastrulation (PubMed:[11703928](#)). Involved in axis formation during embryonic development, via activation of canonical Wnt/CTNNB1 signaling (PubMed:[11703928](#), PubMed:[25371059](#)). May be involved in the specification of the spatial patterns of expression of Gsc and other regulatory genes leading to the establishment of the embryonic axis (PubMed:[7600994](#)).

#### Cellular Location

Secreted, extracellular space, extracellular matrix {ECO:0000250|UniProtKB:Q9H1J5}. Secreted {ECO:0000250|UniProtKB:Q9H1J5}

#### Tissue Location

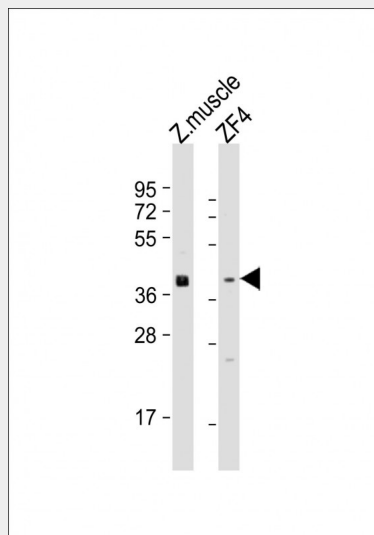
Expressed in the margin of the pregastrula embryo destined to be the future mesoderm.

### Zebrafish wnt8a Antibody (Center) - Protocols

Provided below are standard protocols that you may find useful for product applications.

- [Western Blot](#)
- [Blocking Peptides](#)
- [Dot Blot](#)
- [Immunohistochemistry](#)
- [Immunofluorescence](#)
- [Immunoprecipitation](#)
- [Flow Cytometry](#)
- [Cell Culture](#)

### Zebrafish wnt8a Antibody (Center) - Images



All lanes : Anti-Zebrafish wnt8a Antibody (Center) at 1:1000-1:2000 dilution Lane 1: zebrafish muscle lysate Lane 2: ZF4 whole cell lysate Lysates/proteins at 20 µg per lane. Secondary Goat Anti-Rabbit IgG, (H+L), Peroxidase conjugated at 1/10000 dilution. Predicted band size : 40 kDa Blocking/Dilution buffer: 5% NFDM/TBST.

### Zebrafish wnt8a Antibody (Center) - Background

Ligand for members of the frizzled family of seven transmembrane receptors. Probable developmental protein. Is likely to signal over only few cell diameters. May be involved in the

specification of the spatial patterns of expression of Gsc and other regulatory genes leading to the establishment of the embryonic axis.

#### **Zebrafish wnt8a Antibody (Center) - References**

Kelly G.M., et al. Development 121:1787-1799(1995).  
Lekven A.C., et al. Dev. Cell 1:103-114(2001).

#### **Zebrafish wnt8a Antibody (Center) - Citations**

- [The ESCRT-Related ATPase Vps4 Is Modulated by Interferon during Herpes Simplex Virus 1 Infection.](#)