

**Dsk2 Antibody (C-term)**  
**Purified Rabbit Polyclonal Antibody (Pab)**  
**Catalog # AP2175b**

**Specification**

---

**Dsk2 Antibody (C-term) - Product Information**

|                   |                        |
|-------------------|------------------------|
| Application       | WB,E                   |
| Primary Accession | <a href="#">O9UHD9</a> |
| Reactivity        | Human                  |
| Host              | Rabbit                 |
| Clonality         | Polyclonal             |
| Isotype           | Rabbit IgG             |
| Calculated MW     | 65696                  |
| Antigen Region    | 515-545                |

**Dsk2 Antibody (C-term) - Additional Information**

**Gene ID** 29978

**Other Names**

Ubiquilin-2, Chap1, DSK2 homolog, Protein linking IAP with cytoskeleton 2, PLIC-2, hPLIC-2, Ubiquitin-like product Chap1/Dsk2, UBQLN2, N4BP4, PLIC2

**Target/Specificity**

This Dsk2 antibody is generated from rabbits immunized with a KLH conjugated synthetic peptide between 515-545 amino acids from the C-terminal region of human Dsk2.

**Dilution**

WB~~1:1000

**Format**

Purified polyclonal antibody supplied in PBS with 0.09% (W/V) sodium azide. This antibody is prepared by Saturated Ammonium Sulfate (SAS) precipitation followed by dialysis against PBS.

**Storage**

Maintain refrigerated at 2-8°C for up to 2 weeks. For long term storage store at -20°C in small aliquots to prevent freeze-thaw cycles.

**Precautions**

Dsk2 Antibody (C-term) is for research use only and not for use in diagnostic or therapeutic procedures.

**Dsk2 Antibody (C-term) - Protein Information**

**Name** UBQLN2

**Synonyms** N4BP4, PLIC2

**Function** Plays an important role in the regulation of different protein degradation mechanisms and pathways including ubiquitin- proteasome system (UPS), autophagy and the endoplasmic reticulum- associated protein degradation (ERAD) pathway. Mediates the proteasomal targeting of misfolded or accumulated proteins for degradation by binding (via UBA domain) to their polyubiquitin chains and by interacting (via ubiquitin-like domain) with the subunits of the proteasome (PubMed:[10983987](#)). Plays a role in the ERAD pathway via its interaction with ER-localized proteins FAF2/UBXD8 and HERPUD1 and may form a link between the polyubiquitinated ERAD substrates and the proteasome (PubMed:[18307982](#), PubMed:[24215460](#)). Involved in the regulation of macroautophagy and autophagosome formation; required for maturation of autophagy-related protein LC3 from the cytosolic form LC3-I to the membrane-bound form LC3-II and may assist in the maturation of autophagosomes to autolysosomes by mediating autophagosome-lysosome fusion (PubMed:[19148225](#), PubMed:[20529957](#)). Negatively regulates the endocytosis of GPCR receptors: AVPR2 and ADRB2, by specifically reducing the rate at which receptor-arrestin complexes concentrate in clathrin-coated pits (CCPs) (PubMed:[18199683](#)).

#### Cellular Location

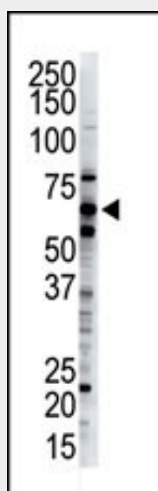
Cytoplasm. Nucleus. Membrane {ECO:0000250|UniProtKB:Q9QZM0} Cytoplasmic vesicle, autophagosome Note=Colocalizes with a subset of proteasomes, namely those that are cytoskeleton associated or free in the cytosol. Associated with fibers in mitotic cells.

#### Dsk2 Antibody (C-term) - Protocols

Provided below are standard protocols that you may find useful for product applications.

- [Western Blot](#)
- [Blocking Peptides](#)
- [Dot Blot](#)
- [Immunohistochemistry](#)
- [Immunofluorescence](#)
- [Immunoprecipitation](#)
- [Flow Cytometry](#)
- [Cell Culture](#)

#### Dsk2 Antibody (C-term) - Images



The anti-Dsk2 Pab (Cat. #AP2175b) is used in Western blot to detect Dsk2 in HeLa cell lysate.

#### Dsk2 Antibody (C-term) - Background

Dsk2 increases the half-life of proteins destined to be degraded by the proteasome, and may modulate proteasome-mediated protein degradation. The Dsk2 protein binds UBE3A and BTRC, and interacts with the 19S proteasome subunit. In the cytoplasm, Dsk2 colocalizes with the proteasome; it is also associated with fibers in mitotic cells in the nucleus. Dsk2 is highly expressed in mitotic cells from metaphase to telophase, while expression in non-mitotic cells is very low.

#### **Dsk2 Antibody (C-term) - References**

- Walters, K.J., et al., *Biochemistry* 41(6):1767-1777 (2002).  
Kleijnen, M.F., et al., *Mol. Cell* 6(2):409-419 (2000).  
Ueki, N., et al., *Nat. Biotechnol.* 16(13):1338-1342 (1998).