

DPEP2 Antibody (Center)
Purified Rabbit Polyclonal Antibody (Pab)
Catalog # AP21755c

Specification

DPEP2 Antibody (Center) - Product Information

Application	WB,E
Primary Accession	O9H4A9
Reactivity	Mouse
Host	Rabbit
Clonality	polyclonal
Isotype	Rabbit IgG
Antigen Region	220-254

DPEP2 Antibody (Center) - Additional Information

Gene ID 64174

Other Names
Dipeptidase 2, DPEP2

Target/Specificity
This DPEP2 antibody is generated from a rabbit immunized with a KLH conjugated synthetic peptide between 220-254 amino acids from the Central region of human DPEP2.

Dilution
WB~~1:2000

Format
Purified polyclonal antibody supplied in PBS with 0.09% (W/V) sodium azide. This antibody is purified through a protein A column, followed by peptide affinity purification.

Storage
Maintain refrigerated at 2-8°C for up to 2 weeks. For long term storage store at -20°C in small aliquots to prevent freeze-thaw cycles.

Precautions
DPEP2 Antibody (Center) is for research use only and not for use in diagnostic or therapeutic procedures.

DPEP2 Antibody (Center) - Protein Information

Name DPEP2

Function Dipeptidase that hydrolyzes leukotriene D4 (LTD4) into leukotriene E4 (LTE4) (PubMed:[32325220](#)). Hydrolyzes cystinyl-bis- glycine (PubMed:[32325220](#)).

Cellular Location

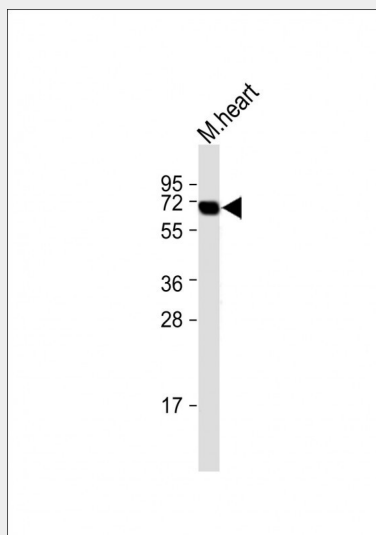
Membrane {ECO:0000250|UniProtKB:Q8C255}; Lipid- anchor, GPI-anchor
{ECO:0000250|UniProtKB:Q8C255}

DPEP2 Antibody (Center) - Protocols

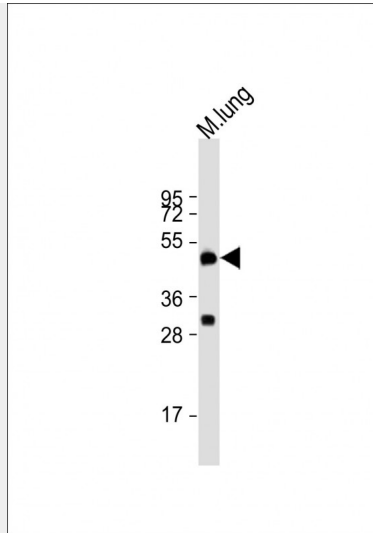
Provided below are standard protocols that you may find useful for product applications.

- [Western Blot](#)
- [Blocking Peptides](#)
- [Dot Blot](#)
- [Immunohistochemistry](#)
- [Immunofluorescence](#)
- [Immunoprecipitation](#)
- [Flow Cytometry](#)
- [Cell Culture](#)

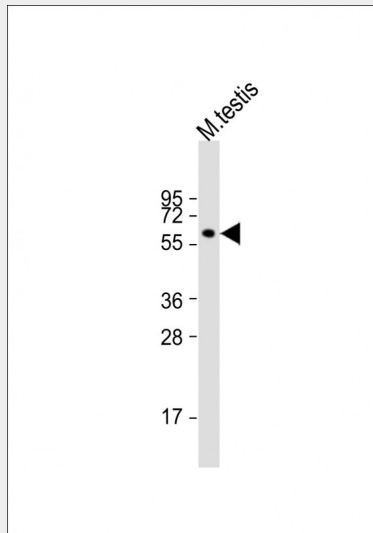
DPEP2 Antibody (Center) - Images



All lanes : Anti-DPEP2 Antibody (Center) at 1:1000 dilution Lane 1: mouse heart lysate
Lysates/proteins at 20 µg per lane. Secondary Goat Anti-Rabbit IgG, (H+L), Peroxidase conjugated
at 1/10000 dilution. Observed band size : 70 kDa Blocking/Dilution buffer: 5% NFDN/TBST.



Anti-DPEP2 Antibody (Center) at 1:2000 dilution + mouse lung lysate Lysates/proteins at 20 μ g per lane. Secondary Goat Anti-Rabbit IgG, (H+L), Peroxidase conjugated at 1/10000 dilution. Predicted band size : 53 kDa Blocking/Dilution buffer: 5% NFD/MTBST.



Anti-DPEP2 Antibody (Center) at 1:2000 dilution + mouse testis lysate Lysates/proteins at 20 μ g per lane. Secondary Goat Anti-Rabbit IgG, (H+L), Peroxidase conjugated at 1/10000 dilution. Predicted band size : 53 kDa Blocking/Dilution buffer: 5% NFD/MTBST.

DPEP2 Antibody (Center) - Background

Probable metalloprotease which hydrolyzes leukotriene D4 (LTD4) into leukotriene E4 (LTE4).

DPEP2 Antibody (Center) - References

- Chen J.M.,et al.Submitted (OCT-2000) to the EMBL/GenBank/DDBJ databases.
- Ota T.,et al.Nat. Genet. 36:40-45(2004).
- Martin J.,et al.Nature 432:988-994(2004).
- Mural R.J.,et al.Submitted (JUL-2005) to the EMBL/GenBank/DDBJ databases.
- Clark H.F.,et al.Genome Res. 13:2265-2270(2003).