

**LSM2 Antibody (C-Term)**  
**Purified Rabbit Polyclonal Antibody (Pab)**  
**Catalog # AP21749b**

**Specification**

---

**LSM2 Antibody (C-Term) - Product Information**

Application	<b>WB, IHC-P,E</b>
Primary Accession	<a href="#">O9Y333</a>
Reactivity	<b>Human, Mouse</b>
Host	<b>Rabbit</b>
Clonality	<b>polyclonal</b>
Isotype	<b>Rabbit IgG</b>
Calculated MW	<b>10835</b>

**LSM2 Antibody (C-Term) - Additional Information**

**Gene ID** 57819

**Other Names**

U6 snRNA-associated Sm-like protein LSm2, Protein G7b, Small nuclear ribonuclear protein D homolog, snRNP core Sm-like protein Sm-x5, LSM2, C6orf28, G7B

**Target/Specificity**

This LSM2 antibody is generated from a rabbit immunized with a KLH conjugated synthetic peptide between 55-89 amino acids from human LSM2.

**Dilution**

WB~~1:2000

IHC-P~~1:25

**Format**

Purified polyclonal antibody supplied in PBS with 0.09% (W/V) sodium azide. This antibody is purified through a protein A column, followed by peptide affinity purification.

**Storage**

Maintain refrigerated at 2-8°C for up to 2 weeks. For long term storage store at -20°C in small aliquots to prevent freeze-thaw cycles.

**Precautions**

LSM2 Antibody (C-Term) is for research use only and not for use in diagnostic or therapeutic procedures.

**LSM2 Antibody (C-Term) - Protein Information**

**Name** LSM2

**Synonyms** C6orf28, G7B

**Function** Plays a role in pre-mRNA splicing as component of the U4/U6- U5 tri-snRNP complex that is involved in spliceosome assembly, and as component of the precatalytic spliceosome (spliceosome B complex) (PubMed:[28781166](#)). The heptameric LSM2-8 complex binds specifically to the 3'-terminal U-tract of U6 snRNA (PubMed:[10523320](#)).

#### Cellular Location

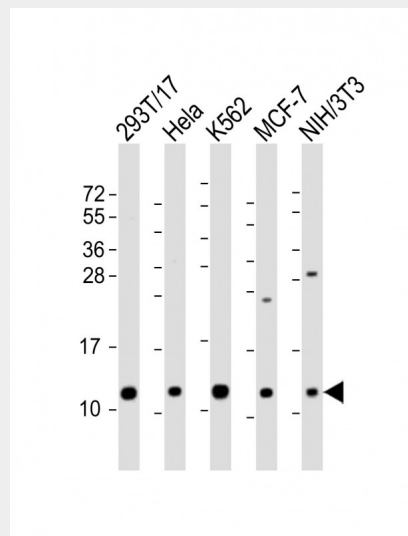
Nucleus

#### LSM2 Antibody (C-Term) - Protocols

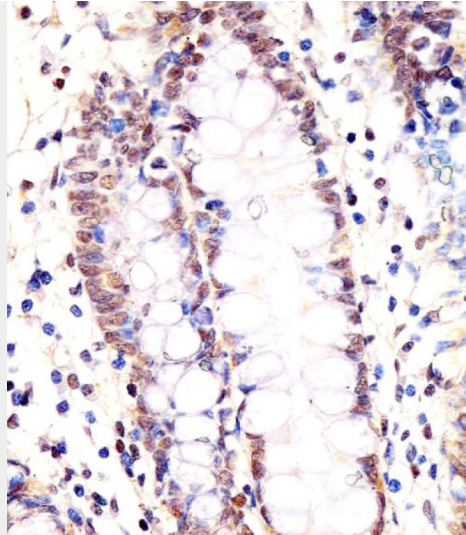
Provided below are standard protocols that you may find useful for product applications.

- [Western Blot](#)
- [Blocking Peptides](#)
- [Dot Blot](#)
- [Immunohistochemistry](#)
- [Immunofluorescence](#)
- [Immunoprecipitation](#)
- [Flow Cytometry](#)
- [Cell Culture](#)

#### LSM2 Antibody (C-Term) - Images



All lanes : Anti-LSM2 Antibody (C-Term) at 1:2000 dilution Lane 1: 293T/17 whole cell lysate Lane 2: HeLa whole cell lysate Lane 3: K562 whole cell lysate Lane 4: MCF-7 whole cell lysate Lane 5: NIH/3T3 whole cell lysate Lysates/proteins at 20 µg per lane. Secondary Goat Anti-Rabbit IgG, (H+L), Peroxidase conjugated at 1/10000 dilution. Predicted band size : 11 kDa Blocking/Dilution buffer: 5% NFD/MTBST.



AP21749b staining LSM2 in human colon tissue sections by Immunohistochemistry (IHC-P - paraformaldehyde-fixed, paraffin-embedded sections). Tissue was fixed with formaldehyde and blocked with 3% BSA for 0.5 hour at room temperature; antigen retrieval was by heat mediation with a citrate buffer (pH6). Samples were incubated with primary antibody (1/25) for 1 hour at 37°C. A undiluted biotinylated goat polyvalent antibody was used as the secondary antibody.

#### **LSM2 Antibody (C-Term) - Background**

Binds specifically to the 3'-terminal U-tract of U6 snRNA. May be involved in pre-mRNA splicing.

#### **LSM2 Antibody (C-Term) - References**

- Achsel T., et al. EMBO J. 18:5789-5802(1999).
- Olavesen M.G., et al. Submitted (AUG-1999) to the EMBL/GenBank/DDBJ databases.
- Schmarda A., et al. Submitted (OCT-1999) to the EMBL/GenBank/DDBJ databases.
- Xie T., et al. Genome Res. 13:2621-2636(2003).
- Shiina S., et al. Submitted (SEP-1999) to the EMBL/GenBank/DDBJ databases.