

**ROPN1 Antibody (Center)**  
**Purified Rabbit Polyclonal Antibody (Pab)**  
**Catalog # AP21743c**

**Specification**

---

**ROPN1 Antibody (Center) - Product Information**

Application	WB,E
Primary Accession	<a href="#">O9HAT0</a>
Reactivity	Human
Host	Rabbit
Clonality	polyclonal
Isotype	Rabbit IgG
Calculated MW	23893
Antigen Region	91-121

**ROPN1 Antibody (Center) - Additional Information**

**Gene ID** 54763

**Other Names**

Ropporin-1A, Cancer/testis antigen 91, CT91, Rhophilin-associated protein 1A, ROPN1, ROPN1A

**Target/Specificity**

This ROPN1 antibody is generated from a rabbit immunized with a KLH conjugated synthetic peptide between 91-121 amino acids from the Central region of human ROPN1.

**Dilution**

WB~~1:2000

**Format**

Purified polyclonal antibody supplied in PBS with 0.09% (W/V) sodium azide. This antibody is purified through a protein A column, followed by peptide affinity purification.

**Storage**

Maintain refrigerated at 2-8°C for up to 2 weeks. For long term storage store at -20°C in small aliquots to prevent freeze-thaw cycles.

**Precautions**

ROPN1 Antibody (Center) is for research use only and not for use in diagnostic or therapeutic procedures.

**ROPN1 Antibody (Center) - Protein Information**

**Name** ROPN1

**Synonyms** ROPN1A

**Function** Important for male fertility. With ROPN1L, involved in fibrous sheath integrity and sperm

motility, plays a role in PKA- dependent signaling processes required for spermatozoa capacitation.

#### Cellular Location

Cell projection, cilium, flagellum {ECO:0000250|UniProtKB:Q9ESG2}. Note=In the sperm tail, found in the principal piece and in the cytoplasmic droplet located at the distal end of the midpiece. Inner surface of the fibrous sheath {ECO:0000250|UniProtKB:Q9ESG2}

#### Tissue Location

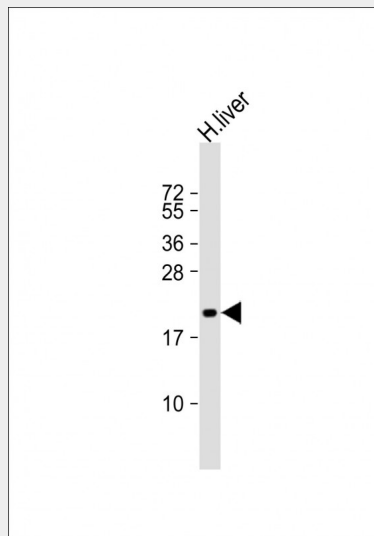
Testis specific in adult. Overexpressed in hematologic tumor cells.

### ROPN1 Antibody (Center) - Protocols

Provided below are standard protocols that you may find useful for product applications.

- [Western Blot](#)
- [Blocking Peptides](#)
- [Dot Blot](#)
- [Immunohistochemistry](#)
- [Immunofluorescence](#)
- [Immunoprecipitation](#)
- [Flow Cytometry](#)
- [Cell Culture](#)

### ROPN1 Antibody (Center) - Images



Anti-ROPN1 Antibody (Center) at 1:2000 dilution + human liver lysate Lysates/proteins at 20 µg per lane. Secondary Goat Anti-Rabbit IgG, (H+L), Peroxidase conjugated at 1/10000 dilution. Predicted band size : 24 kDa Blocking/Dilution buffer: 5% NFDN/TBST.

### ROPN1 Antibody (Center) - References

- Zhou Z.M.,et al.Submitted (AUG-2001) to the EMBL/GenBank/DDBJ databases.  
Bechtel S.,et al.BMC Genomics 8:399-399(2007).  
Mural R.J.,et al.Submitted (SEP-2005) to the EMBL/GenBank/DDBJ databases.  
Li Z.,et al.Int. J. Cancer 121:1507-1511(2007).