

**TWF1 Antibody (Center)**  
**Purified Rabbit Polyclonal Antibody (Pab)**  
**Catalog # AP21742c**

**Specification**

---

**TWF1 Antibody (Center) - Product Information**

Application	WB,E
Primary Accession	<a href="#">Q12792</a>
Reactivity	Human, Mouse
Host	Rabbit
Clonality	polyclonal
Isotype	Rabbit IgG
Calculated MW	40283

**TWF1 Antibody (Center) - Additional Information**

**Gene ID** 5756

**Other Names**

Twinfilin-1, Protein A6, Protein tyrosine kinase 9, TWF1, PTK9

**Target/Specificity**

This TWF1 antibody is generated from a rabbit immunized with a KLH conjugated synthetic peptide between 201-235 amino acids from the Central region of human TWF1.

**Dilution**

WB~~1:2000

**Format**

Purified polyclonal antibody supplied in PBS with 0.09% (W/V) sodium azide. This antibody is purified through a protein A column, followed by peptide affinity purification.

**Storage**

Maintain refrigerated at 2-8°C for up to 2 weeks. For long term storage store at -20°C in small aliquots to prevent freeze-thaw cycles.

**Precautions**

TWF1 Antibody (Center) is for research use only and not for use in diagnostic or therapeutic procedures.

**TWF1 Antibody (Center) - Protein Information**

**Name** TWF1

**Synonyms** PTK9

**Function** Actin-binding protein involved in motile and morphological processes. Inhibits actin polymerization, likely by sequestering G- actin. By capping the barbed ends of filaments, it also

regulates motility. Seems to play an important role in clathrin-mediated endocytosis and distribution of endocytic organelles (By similarity).

#### Cellular Location

Cytoplasm. Cytoplasm, cytoskeleton. Note=Diffuse cytoplasmic localization with perinuclear and G-actin-rich cortical actin structures sublocalization. Also found at membrane ruffles and cell-cell contacts (By similarity).

#### Tissue Location

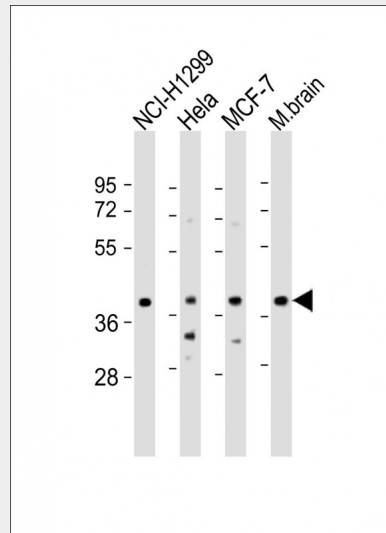
Expressed at high levels in the colon, testis, ovary, prostate and lung. Expressed at lower levels in the brain, bladder and heart. Not detected in liver.

### TWF1 Antibody (Center) - Protocols

Provided below are standard protocols that you may find useful for product applications.

- [Western Blot](#)
- [Blocking Peptides](#)
- [Dot Blot](#)
- [Immunohistochemistry](#)
- [Immunofluorescence](#)
- [Immunoprecipitation](#)
- [Flow Cytometry](#)
- [Cell Culture](#)

### TWF1 Antibody (Center) - Images



All lanes : Anti-TWF1 Antibody (Center) at 1:2000 dilution Lane 1: NCI-H1299 whole cell lysate Lane 2: HeLa whole cell lysate Lane 3: MCF-7 whole cell lysate Lane 4: mouse brain lysate Lysates/proteins at 20 µg per lane. Secondary Goat Anti-Rabbit IgG, (H+L), Peroxidase conjugated at 1/10000 dilution. Predicted band size : 40 kDa Blocking/Dilution buffer: 5% NFD/MTBST.

### TWF1 Antibody (Center) - Background

Actin-binding protein involved in motile and morphological processes. Inhibits actin polymerization, likely by sequestering G-actin. By capping the barbed ends of filaments, it also regulates motility. Seems to play an important role in clathrin-mediated endocytosis and

distribution of endocytic organelles (By similarity).

#### **TWF1 Antibody (Center) - References**

Beeler J.F.,et al.Mol. Cell. Biol. 14:982-988(1994).  
Ota T.,et al.Nat. Genet. 36:40-45(2004).  
Halleck A.,et al.Submitted (JUN-2004) to the EMBL/GenBank/DDBJ databases.  
Kalnine N.,et al.Submitted (OCT-2004) to the EMBL/GenBank/DDBJ databases.  
Totoki Y.,et al.Submitted (MAR-2005) to the EMBL/GenBank/DDBJ databases.