

**NDUFB3 Antibody (Center)**  
**Purified Rabbit Polyclonal Antibody (Pab)**  
**Catalog # AP21738c****Specification**

---

**NDUFB3 Antibody (Center) - Product Information**

Application	<b>WB,E</b>
Primary Accession	<a href="#">O43676</a>
Reactivity	<b>Human, Mouse</b>
Host	<b>Rabbit</b>
Clonality	<b>polyclonal</b>
Isotype	<b>Rabbit IgG</b>
Calculated MW	<b>11402</b>

**NDUFB3 Antibody (Center) - Additional Information****Gene ID** 4709**Other Names**

NADH dehydrogenase [ubiquinone] 1 beta subcomplex subunit 3, Complex I-B12, CI-B12, NADH-ubiquinone oxidoreductase B12 subunit, NDUFB3

**Target/Specificity**

This NDUFB3 antibody is generated from a rabbit immunized with a KLH conjugated synthetic peptide between 14-49 amino acids from the Central region of human NDUFB3.

**Dilution**

WB~~1:2000

**Format**

Purified polyclonal antibody supplied in PBS with 0.09% (W/V) sodium azide. This antibody is purified through a protein A column, followed by peptide affinity purification.

**Storage**

Maintain refrigerated at 2-8°C for up to 2 weeks. For long term storage store at -20°C in small aliquots to prevent freeze-thaw cycles.

**Precautions**

NDUFB3 Antibody (Center) is for research use only and not for use in diagnostic or therapeutic procedures.

**NDUFB3 Antibody (Center) - Protein Information****Name** NDUFB3**Function** Accessory subunit of the mitochondrial membrane respiratory chain NADH dehydrogenase (Complex I), that is believed not to be involved in catalysis. Complex I functions in the transfer of electrons from NADH to the respiratory chain. The immediate electron acceptor for

the enzyme is believed to be ubiquinone.

#### Cellular Location

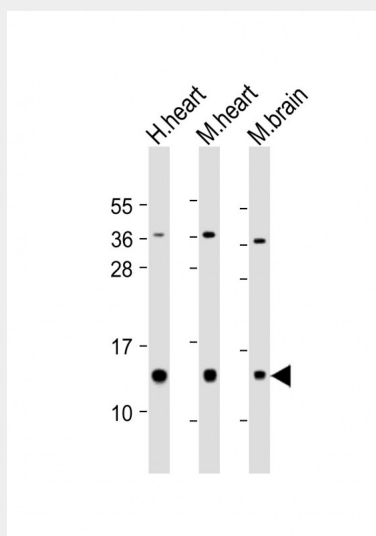
Mitochondrion inner membrane; Single-pass membrane protein; Matrix side

#### NDUFB3 Antibody (Center) - Protocols

Provided below are standard protocols that you may find useful for product applications.

- [Western Blot](#)
- [Blocking Peptides](#)
- [Dot Blot](#)
- [Immunohistochemistry](#)
- [Immunofluorescence](#)
- [Immunoprecipitation](#)
- [Flow Cytometry](#)
- [Cell Culture](#)

#### NDUFB3 Antibody (Center) - Images



All lanes : Anti-NDUFB3 Antibody (Center) at 1:2000 dilution Lane 1: human heart lysate Lane 2: mouse heart lysate Lane 3: mouse brain lysate Lysates/proteins at 20 µg per lane. Secondary Goat Anti-Rabbit IgG, (H+L), Peroxidase conjugated at 1/10000 dilution. Predicted band size : 11 kDa Blocking/Dilution buffer: 5% NFDN/TBST.

#### NDUFB3 Antibody (Center) - Background

Accessory subunit of the mitochondrial membrane respiratory chain NADH dehydrogenase (Complex I), that is believed not to be involved in catalysis. Complex I functions in the transfer of electrons from NADH to the respiratory chain. The immediate electron acceptor for the enzyme is believed to be ubiquinone.

#### NDUFB3 Antibody (Center) - References

- Ton C., et al. *Biochem. Biophys. Res. Commun.* 241:589-594(1997).  
Loeffen J.L.C.M., et al. *Biochem. Biophys. Res. Commun.* 253:415-422(1998).  
Ebert L., et al. Submitted (JUN-2004) to the EMBL/GenBank/DDBJ databases.

Hillier L.W.,et al.Nature 434:724-731(2005).

Mural R.J.,et al.Submitted (JUL-2005) to the EMBL/GenBank/DDBJ databases.