

XPNPEP2 Antibody (Center)
Purified Rabbit Polyclonal Antibody (Pab)
Catalog # AP21732c

Specification

XPNPEP2 Antibody (Center) - Product Information

Application	WB,E
Primary Accession	O43895
Reactivity	Human
Host	Rabbit
Clonality	polyclonal
Isotype	Rabbit IgG
Calculated MW	75625

XPNPEP2 Antibody (Center) - Additional Information

Gene ID 7512

Other Names

Xaa-Pro aminopeptidase 2, Aminoacylproline aminopeptidase, Membrane-bound aminopeptidase P, Membrane-bound APP, Membrane-bound AmP, mAmP, X-Pro aminopeptidase 2, XPNPEP2

Target/Specificity

This XPNPEP2 antibody is generated from a rabbit immunized with a KLH conjugated synthetic peptide between 373-407 amino acids from the Central region of human XPNPEP2.

Dilution

WB~~1:2000

Format

Purified polyclonal antibody supplied in PBS with 0.09% (W/V) sodium azide. This antibody is purified through a protein A column, followed by peptide affinity purification.

Storage

Maintain refrigerated at 2-8°C for up to 2 weeks. For long term storage store at -20°C in small aliquots to prevent freeze-thaw cycles.

Precautions

XPNPEP2 Antibody (Center) is for research use only and not for use in diagnostic or therapeutic procedures.

XPNPEP2 Antibody (Center) - Protein Information

Name XPNPEP2

Function Membrane-bound metalloprotease which catalyzes the removal of a penultimate prolyl residue from the N-termini of peptides, such as Arg-Pro-Pro. May play a role in the metabolism of the vasodilator bradykinin.

Cellular Location

Cell membrane {ECO:0000250|UniProtKB:Q95333}; Lipid-anchor, GPI-anchor {ECO:0000250|UniProtKB:Q95333}

Tissue Location

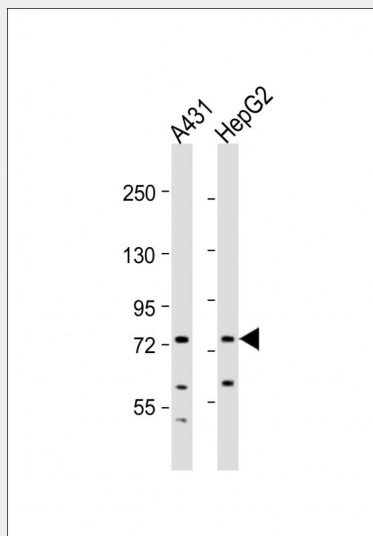
Expressed in kidney, lung, heart, placenta, liver, small intestine and colon. No expression in brain, skeletal muscle, pancreas, spleen, thymus, prostate, testis and ovary

XPNPEP2 Antibody (Center) - Protocols

Provided below are standard protocols that you may find useful for product applications.

- [Western Blot](#)
- [Blocking Peptides](#)
- [Dot Blot](#)
- [Immunohistochemistry](#)
- [Immunofluorescence](#)
- [Immunoprecipitation](#)
- [Flow Cytometry](#)
- [Cell Culture](#)

XPNPEP2 Antibody (Center) - Images



All lanes : Anti-XPNPEP2 Antibody (Center) at 1:2000 dilution Lane 1: A431 whole cell lysate Lane 2: HepG2 whole cell lysate Lysates/proteins at 20 µg per lane. Secondary Goat Anti-Rabbit IgG, (H+L), Peroxidase conjugated at 1/10000 dilution. Predicted band size : 76 kDa Blocking/Dilution buffer: 5% NFDM/TBST.

XPNPEP2 Antibody (Center) - Background

A metalloprotease that may play a role in the inflammatory process and other reactions produced in response to injury or infection. May also play a role in the metabolism of the vasodilator bradykinin.

XPNPEP2 Antibody (Center) - References

Venema R.C., et al. Biochim. Biophys. Acta 1354:45-48(1997).

Sprinkle T.J.C.,et al.Submitted (SEP-2000) to the EMBL/GenBank/DDBJ databases.

Ryan J.W.,et al.Submitted (OCT-1999) to the EMBL/GenBank/DDBJ databases.

Ross M.T.,et al.Nature 434:325-337(2005).

Duan Q.L.,et al.Am. J. Hum. Genet. 77:617-626(2005).