

**PM20D1 Antibody (N-Term)**  
**Purified Rabbit Polyclonal Antibody (Pab)**  
**Catalog # AP21685a**

**Specification**

---

**PM20D1 Antibody (N-Term) - Product Information**

Application	WB,E
Primary Accession	<a href="#">Q6GTS8</a>
Reactivity	Human
Host	Rabbit
Clonality	polyclonal
Isotype	Rabbit IgG
Calculated MW	55741
Antigen Region	125-159

**PM20D1 Antibody (N-Term) - Additional Information**

**Gene ID** 148811

**Other Names**

Probable carboxypeptidase PM20D1, 3417-, Peptidase M20 domain-containing protein 1, PM20D1

**Target/Specificity**

This PM20D1 antibody is generated from a rabbit immunized with a KLH conjugated synthetic peptide between 125-159 amino acids from the human region of human PM20D1.

**Dilution**

WB~~1:2000

**Format**

Purified polyclonal antibody supplied in PBS with 0.09% (W/V) sodium azide. This antibody is purified through a protein A column, followed by peptide affinity purification.

**Storage**

Maintain refrigerated at 2-8°C for up to 2 weeks. For long term storage store at -20°C in small aliquots to prevent freeze-thaw cycles.

**Precautions**

PM20D1 Antibody (N-Term) is for research use only and not for use in diagnostic or therapeutic procedures.

**PM20D1 Antibody (N-Term) - Protein Information**

**Name** PM20D1 ([HGNC:26518](#))

**Function** Secreted enzyme that regulates the endogenous N-fatty acyl amino acid (NAAs) tissue and circulating levels by functioning as a bidirectional NAA synthase/hydrolase (PubMed:[27374330](#)). It condenses free fatty acids and free amino acids to generate NAAs and

bidirectionally catalyzes the reverse hydrolysis reaction (PubMed:[27374330](#)). Some of these NAAs stimulate oxidative metabolism via mitochondrial uncoupling, increasing energy expenditure in a UPC1- independent manner. Thereby, this secreted protein may indirectly regulate whole body energy expenditure. PM20D1 circulates in tight association with both low- and high-density (LDL and HDL, respectively) lipoprotein particles (By similarity).

#### Cellular Location

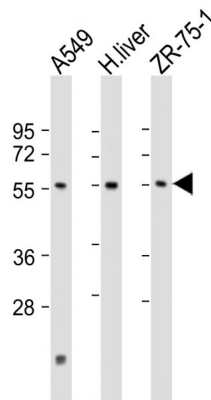
Secreted {ECO:0000250|UniProtKB:Q8C165}.

#### PM20D1 Antibody (N-Term) - Protocols

Provided below are standard protocols that you may find useful for product applications.

- [Western Blot](#)
- [Blocking Peptides](#)
- [Dot Blot](#)
- [Immunohistochemistry](#)
- [Immunofluorescence](#)
- [Immunoprecipitation](#)
- [Flow Cytometry](#)
- [Cell Culture](#)

#### PM20D1 Antibody (N-Term) - Images



All lanes : Anti-PM20D1 Antibody (N-Term) at 1:2000 dilution Lane 1: A549 whole cell lysate Lane 2: human liver lysate Lane 3: ZR-75-1 whole cell lysate Lysates/proteins at 20 µg per lane. Secondary Goat Anti-Rabbit IgG, (H+L), Peroxidase conjugated at 1/10000 dilution. Predicted band size : 56 kDa Blocking/Dilution buffer: 5% NFDM/TBST.

#### PM20D1 Antibody (N-Term) - References

Ota T., et al. Nat. Genet. 36:40-45(2004).  
Gregory S.G., et al. Nature 441:315-321(2006).