

**ADCY5 Antibody (Center)**  
**Purified Rabbit Polyclonal Antibody (Pab)**  
**Catalog # AP21676c**

**Specification**

---

**ADCY5 Antibody (Center) - Product Information**

Application	<b>WB,E</b>
Primary Accession	<a href="#">O95622</a>
Reactivity	<b>Human</b>
Host	<b>Rabbit</b>
Clonality	<b>polyclonal</b>
Isotype	<b>Rabbit IgG</b>
Calculated MW	<b>138908</b>

**ADCY5 Antibody (Center) - Additional Information**

**Gene ID** 111

**Other Names**

Adenylate cyclase type 5, ATP pyrophosphate-lyase 5, Adenylate cyclase type V, Adenylyl cyclase 5, ADCY5

**Target/Specificity**

This ADCY5 antibody is generated from a rabbit immunized with a KLH conjugated synthetic peptide between 604-639 amino acids from the Central region of human ADCY5.

**Dilution**

WB~~1:1000-1:2000

**Format**

Purified polyclonal antibody supplied in PBS with 0.09% (W/V) sodium azide. This antibody is purified through a protein A column, followed by peptide affinity purification.

**Storage**

Maintain refrigerated at 2-8°C for up to 2 weeks. For long term storage store at -20°C in small aliquots to prevent freeze-thaw cycles.

**Precautions**

ADCY5 Antibody (Center) is for research use only and not for use in diagnostic or therapeutic procedures.

**ADCY5 Antibody (Center) - Protein Information**

**Name** ADCY5

**Function** Catalyzes the formation of the signaling molecule cAMP in response to G-protein signaling (PubMed:[15385642](#), PubMed:[24700542](#), PubMed:[26206488](#)). Mediates signaling downstream of ADRB1 (PubMed:[24700542](#)). Regulates the increase of free cytosolic Ca(2+) in

response to increased blood glucose levels and contributes to the regulation of Ca<sup>2+</sup>-dependent insulin secretion (PubMed:[24740569](#)).

#### Cellular Location

Cell membrane; Multi-pass membrane protein. Cell projection, cilium  
{ECO:0000250|UniProtKB:P84309}

#### Tissue Location

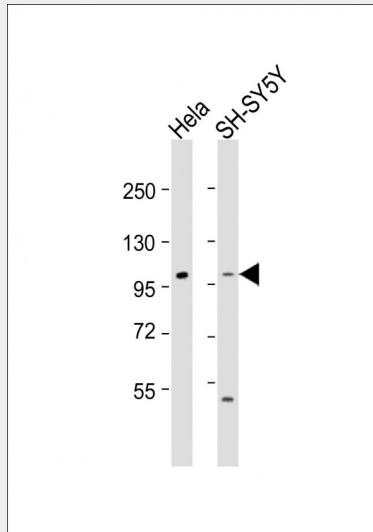
Detected in pancreas islets (at protein level). Expressed in the brain, with high expression in the corpus striatum (PubMed:26085604).

### ADCY5 Antibody (Center) - Protocols

Provided below are standard protocols that you may find useful for product applications.

- [Western Blot](#)
- [Blocking Peptides](#)
- [Dot Blot](#)
- [Immunohistochemistry](#)
- [Immunofluorescence](#)
- [Immunoprecipitation](#)
- [Flow Cytometry](#)
- [Cell Culture](#)

### ADCY5 Antibody (Center) - Images



All lanes : Anti-ADCY5 Antibody (Center) at 1:1000-1:2000 dilution Lane 1: HeLa whole cell lysate  
Lane 2: SH-SY5Y whole cell lysate Lysates/proteins at 20 µg per lane. Secondary Goat Anti-Rabbit IgG, (H+L), Peroxidase conjugated at 1/10000 dilution. Predicted band size : 139 kDa  
Blocking/Dilution buffer: 5% NFD/MTBST.

### ADCY5 Antibody (Center) - Background

This is a membrane-bound, calcium-inhibitable adenylyl cyclase.

### ADCY5 Antibody (Center) - References

Ota T.,et al.Nat. Genet. 36:40-45(2004).  
Muzny D.M.,et al.Nature 440:1194-1198(2006).  
Ludwig M.G.,et al.J. Recept. Signal Transduct. 22:79-110(2002).  
Raimundo S.,et al.Clin. Chim. Acta 285:155-161(1999).  
Ding Q.,et al.Mol. Pharmacol. 66:921-928(2004).