

**NGFR Antibody (C-term)**  
**Purified Rabbit Polyclonal Antibody (Pab)**  
**Catalog # AP21671b**

**Specification**

---

**NGFR Antibody (C-term) - Product Information**

Application	<b>WB, FC,E</b>
Primary Accession	<a href="#">P08138</a>
Reactivity	<b>Human</b>
Host	<b>Rabbit</b>
Clonality	<b>polyclonal</b>
Isotype	<b>Rabbit IgG</b>
Calculated MW	<b>45183</b>

**NGFR Antibody (C-term) - Additional Information**

**Gene ID** 4804

**Other Names**

Tumor necrosis factor receptor superfamily member 16, Gp80-LNGFR, Low affinity neurotrophin receptor p75NTR, Low-affinity nerve growth factor receptor, NGF receptor, p75 ICD, CD271, NGFR, TNFRSF16

**Target/Specificity**

This NGFR antibody is generated from a rabbit immunized with a KLH conjugated synthetic peptide between 276-310 amino acids from the C-terminal region of human NGFR.

**Dilution**

WB~~1:2000

FC~~1:25

**Format**

Purified polyclonal antibody supplied in PBS with 0.09% (W/V) sodium azide. This antibody is purified through a protein A column, followed by peptide affinity purification.

**Storage**

Maintain refrigerated at 2-8°C for up to 2 weeks. For long term storage store at -20°C in small aliquots to prevent freeze-thaw cycles.

**Precautions**

NGFR Antibody (C-term) is for research use only and not for use in diagnostic or therapeutic procedures.

**NGFR Antibody (C-term) - Protein Information**

**Name** NGFR

**Synonyms** TNFRSF16

**Function** Low affinity receptor which can bind to NGF, BDNF, NTF3, and NTF4. Forms a heterodimeric receptor with SORCS2 that binds the precursor forms of NGF, BDNF and NTF3 with high affinity, and has much lower affinity for mature NGF and BDNF (PubMed:[24908487](#)). Plays an important role in differentiation and survival of specific neuronal populations during development (By similarity). Can mediate cell survival as well as cell death of neural cells. Plays a role in the inactivation of RHOA (PubMed:[26646181](#)). Plays a role in the regulation of the translocation of GLUT4 to the cell surface in adipocytes and skeletal muscle cells in response to insulin, probably by regulating RAB31 activity, and thereby contributes to the regulation of insulin- dependent glucose uptake (By similarity). Necessary for the circadian oscillation of the clock genes BMAL1, PER1, PER2 and NR1D1 in the suprachiasmatic nucleus (SCMgetaN) of the brain and in liver and of the genes involved in glucose and lipid metabolism in the liver (PubMed:[23785138](#)). Together with BFAR negatively regulates NF-kappa-B and JNK-related signaling pathways (PubMed:[22566094](#)).

#### Cellular Location

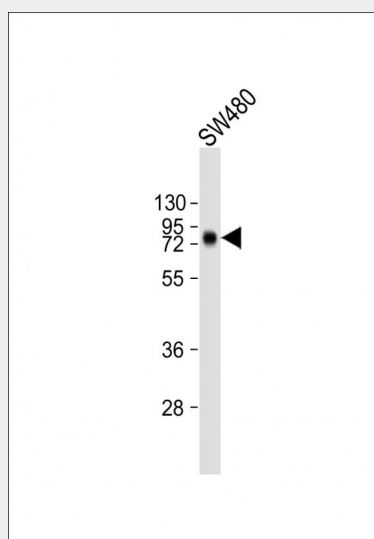
Cell membrane; Single-pass type I membrane protein. Cytoplasm. Perikaryon {ECO:0000250|UniProtKB:Q9Z0W1}. Cell projection, growth cone {ECO:0000250|UniProtKB:Q9Z0W1}. Cell projection, dendritic spine {ECO:0000250|UniProtKB:Q9Z0W1}

#### NGFR Antibody (C-term) - Protocols

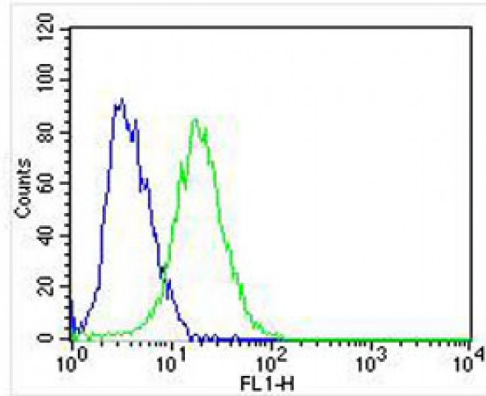
Provided below are standard protocols that you may find useful for product applications.

- [Western Blot](#)
- [Blocking Peptides](#)
- [Dot Blot](#)
- [Immunohistochemistry](#)
- [Immunofluorescence](#)
- [Immunoprecipitation](#)
- [Flow Cytometry](#)
- [Cell Culture](#)

#### NGFR Antibody (C-term) - Images



Anti-NGFR Antibody (C-term) at 1:2000 dilution + SW480 whole cell lysate Lysates/proteins at 20 µg per lane. Secondary Goat Anti-Rabbit IgG, (H+L), Peroxidase conjugated at 1/10000 dilution. Predicted band size : 45 kDa Blocking/Dilution buffer: 5% NFD/MBST.



Overlay histogram showing SH-SY5Y cells stained with AP21671b (green line). The cells were fixed with 2% paraformaldehyde (10 min). The cells were then incubated in 2% bovine serum albumin to block non-specific protein-protein interactions followed by the antibody (AP21671b, 1:25 dilution) for 60 min at 37°C. The secondary antibody used was Goat-Anti-Rabbit IgG, DyLight® 488 Conjugated Highly Cross-Adsorbed(OH191631) at 1/400 dilution for 40 min at 37°C. Isotype control antibody (blue line) was rabbit IgG (1µg/1x10<sup>6</sup> cells) used under the same conditions. Acquisition of >10,000 events was performed.

**NGFR Antibody (C-term) - Background**

Plays a role in the regulation of the translocation of GLUT4 to the cell surface in adipocytes and skeletal muscle cells in response to insulin, probably by regulating RAB31 activity, and thereby contributes to the regulation of insulin-dependent glucose uptake (By similarity). Low affinity receptor which can bind to NGF, BDNF, NT-3, and NT-4. Can mediate cell survival as well as cell death of neural cells. Necessary for the circadian oscillation of the clock genes ARNTL/BMAL1, PER1, PER2 and NR1D1 in the suprachiasmatic nucleus (SCN) of the brain and in liver and of the genes involved in glucose and lipid metabolism in the liver.

**NGFR Antibody (C-term) - References**

Johnson D.,et al.Cell 47:545-554(1986).  
 Ota T.,et al.Nat. Genet. 36:40-45(2004).  
 Zody M.C.,et al.Nature 440:1045-1049(2006).  
 Mural R.J.,et al.Submitted (SEP-2005) to the EMBL/GenBank/DDBJ databases.  
 Sehgal A.,et al.Mol. Cell. Biol. 8:3160-3167(1988).