

PRSS33 Antibody (Center)
Purified Rabbit Polyclonal Antibody (Pab)
Catalog # AP21663c

Specification

PRSS33 Antibody (Center) - Product Information

Application	WB,E
Primary Accession	Q8NF86
Reactivity	Human
Host	Rabbit
Clonality	polyclonal
Isotype	Rabbit IgG
Calculated MW	29787

PRSS33 Antibody (Center) - Additional Information

Gene ID 260429

Other Names

Serine protease 33, 3421-, Serine protease EOS, PRSS33

Target/Specificity

This PRSS33 antibody is generated from a rabbit immunized with a KLH conjugated synthetic peptide between 105-128 amino acids from the Central region of human PRSS33.

Dilution

WB~~1:2000

Format

Purified polyclonal antibody supplied in PBS with 0.09% (W/V) sodium azide. This antibody is purified through a protein A column, followed by peptide affinity purification.

Storage

Maintain refrigerated at 2-8°C for up to 2 weeks. For long term storage store at -20°C in small aliquots to prevent freeze-thaw cycles.

Precautions

PRSS33 Antibody (Center) is for research use only and not for use in diagnostic or therapeutic procedures.

PRSS33 Antibody (Center) - Protein Information

Name PRSS33

Function Serine protease that has amidolytic activity, cleaving its substrates before Arg residues.

Cellular Location

Secreted.

Tissue Location

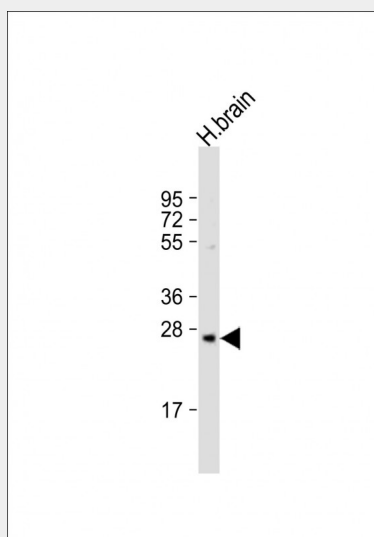
Predominantly expressed in macrophages. Present in the spleen, small and large intestine, lung and brain (at protein level). Highly expressed in peripheral leukocytes, ovary, retina, spleen and stomach. Moderately expressed in thymus, uterus and platelets, as well as some brain tissues, such as thalamus and fetal brain.

PRSS33 Antibody (Center) - Protocols

Provided below are standard protocols that you may find useful for product applications.

- [Western Blot](#)
- [Blocking Peptides](#)
- [Dot Blot](#)
- [Immunohistochemistry](#)
- [Immunofluorescence](#)
- [Immunoprecipitation](#)
- [Flow Cytometry](#)
- [Cell Culture](#)

PRSS33 Antibody (Center) - Images



Anti-PRSS33 Antibody (Center) at 1:2000 dilution + human brain lysate Lysates/proteins at 20 μ g per lane. Secondary Goat Anti-Rabbit IgG, (H+L), Peroxidase conjugated at 1/10000 dilution. Predicted band size : 30 kDa Blocking/Dilution buffer: 5% NFD/MTBST.

PRSS33 Antibody (Center) - Background

Serine protease that has amidolytic activity, cleaving its substrates before Arg residues.

PRSS33 Antibody (Center) - References

- Chen C., et al. *Biochem. J.* 374:97-107(2003).
Martin J., et al. *Nature* 432:988-994(2004).
Mural R.J., et al. Submitted (SEP-2005) to the EMBL/GenBank/DDBJ databases.