

**SPPL2B Antibody (N-Term)**  
**Purified Rabbit Polyclonal Antibody (Pab)**  
**Catalog # AP21660a**

**Specification**

---

**SPPL2B Antibody (N-Term) - Product Information**

Application	WB,E
Primary Accession	<a href="#">Q8TCT7</a>
Reactivity	Human
Host	Rabbit
Clonality	polyclonal
Isotype	Rabbit IgG
Calculated MW	64644

**SPPL2B Antibody (N-Term) - Additional Information**

**Gene ID** 56928

**Other Names**

Signal peptide peptidase-like 2B, SPP-like 2B, SPPL2b, 3423-, Intramembrane protease 4, IMP-4, Presenilin homologous protein 4, PSH4, Presenilin-like protein 1, SPPL2B, IMP4, KIAA1532, PSL1

**Target/Specificity**

This SPPL2B antibody is generated from a rabbit immunized with a KLH conjugated synthetic peptide between 126-160 amino acids from human SPPL2B.

**Dilution**

WB~~1:2000

**Format**

Purified polyclonal antibody supplied in PBS with 0.09% (W/V) sodium azide. This antibody is purified through a protein A column, followed by peptide affinity purification.

**Storage**

Maintain refrigerated at 2-8°C for up to 2 weeks. For long term storage store at -20°C in small aliquots to prevent freeze-thaw cycles.

**Precautions**

SPPL2B Antibody (N-Term) is for research use only and not for use in diagnostic or therapeutic procedures.

**SPPL2B Antibody (N-Term) - Protein Information**

**Name** SPPL2B {ECO:0000303|PubMed:15385547, ECO:0000312|HGNC:HGNC:30627}

**Function** Intramembrane-cleaving aspartic protease (I-CLiP) that cleaves type II membrane signal peptides in the hydrophobic plane of the membrane. Functions in ITM2B and TNF processing (PubMed:[16829951](#), PubMed:[16829952](#), PubMed:[17965014](#), PubMed:[19114711](#),

PubMed:[22194595](#)). Catalyzes the intramembrane cleavage of the anchored fragment of shed TNF-alpha (TNF), which promotes the release of the intracellular domain (ICD) for signaling to the nucleus (PubMed:[16829951](#), PubMed:[16829952](#)). May play a role in the regulation of innate and adaptive immunity (PubMed:[16829952](#)). Catalyzes the intramembrane cleavage of the simian foamy virus processed leader peptide gp18 of the envelope glycoprotein gp130 dependently of prior ectodomain shedding by furin or furin-like proprotein convertase (PC)-mediated cleavage proteolysis (PubMed:[23132852](#)).

#### Cellular Location

Cell membrane; Multi-pass membrane protein. Golgi apparatus membrane; Multi-pass membrane protein. Lysosome membrane; Multi-pass membrane protein. Endosome membrane; Multi-pass membrane protein. Membrane; Multi-pass membrane protein; Luminal side. Note=targeted through the entire secretory pathway to endosomes/lysosomes (PubMed:15998642)

#### Tissue Location

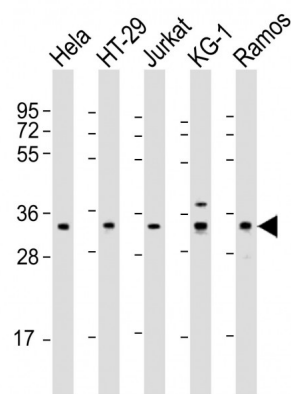
Expressed predominantly in adrenal cortex and mammary gland.

### SPPL2B Antibody (N-Term) - Protocols

Provided below are standard protocols that you may find useful for product applications.

- [Western Blot](#)
- [Blocking Peptides](#)
- [Dot Blot](#)
- [Immunohistochemistry](#)
- [Immunofluorescence](#)
- [Immunoprecipitation](#)
- [Flow Cytometry](#)
- [Cell Culture](#)

### SPPL2B Antibody (N-Term) - Images



All lanes : Anti-SPPL2B Antibody (N-Term) at 1:2000 dilution Lane 1: HeLa whole cell lysate Lane 2: HT-29 whole cell lysate Lane 3: Jurkat whole cell lysate Lane 4: KG-1 whole cell lysate Lane 5: Ramos whole cell lysate Lysates/proteins at 20 µg per lane. Secondary Goat Anti-Rabbit IgG, (H+L), Peroxidase conjugated at 1/10000 dilution. Predicted band size : 65 kDa Blocking/Dilution buffer: 5% NFDM/TBST.

### **SPPL2B Antibody (N-Term) - Background**

Intramembrane-cleaving aspartic protease (I-CLiP) that cleaves type II membrane signal peptides in the hydrophobic plane of the membrane. Functions in ITM2B and TNF processing. Catalyzes the intramembrane cleavage of the anchored fragment of shed TNF- alpha (TNF), which promotes the release of the intracellular domain (ICD) for signaling to the nucleus. May play a role in the regulation of innate and adaptive immunity.

### **SPPL2B Antibody (N-Term) - References**

Irmiler M.,et al.Submitted (SEP-2001) to the EMBL/GenBank/DDBJ databases.  
Martoglio B.,et al.Submitted (NOV-2001) to the EMBL/GenBank/DDBJ databases.  
Grigorenko A.P.,et al.Biochemistry (Mosc.) 67:826-834(2002).  
Nagase T.,et al.DNA Res. 7:143-150(2000).  
Grimwood J.,et al.Nature 428:529-535(2004).