

FMN1 Antibody (Center)
Purified Rabbit Polyclonal Antibody (Pab)
Catalog # AP21647c

Specification

FMN1 Antibody (Center) - Product Information

Application	WB,E
Primary Accession	Q68DA7
Reactivity	Human
Host	Rabbit
Clonality	polyclonal
Isotype	Rabbit IgG
Calculated MW	157578

FMN1 Antibody (Center) - Additional Information

Gene ID 342184

Other Names

Formin-1, Limb deformity protein homolog, FMN1, FMN, LD

Target/Specificity

This FMN1 antibody is generated from a rabbit immunized with a KLH conjugated synthetic peptide between 270-304 amino acids from the Central region of human FMN1.

Dilution

WB~~1:2000

Format

Purified polyclonal antibody supplied in PBS with 0.09% (W/V) sodium azide. This antibody is purified through a protein A column, followed by peptide affinity purification.

Storage

Maintain refrigerated at 2-8°C for up to 2 weeks. For long term storage store at -20°C in small aliquots to prevent freeze-thaw cycles.

Precautions

FMN1 Antibody (Center) is for research use only and not for use in diagnostic or therapeutic procedures.

FMN1 Antibody (Center) - Protein Information

Name FMN1

Synonyms FMN, LD

Function Plays a role in the formation of adherens junction and the polymerization of linear actin cables.

Cellular Location

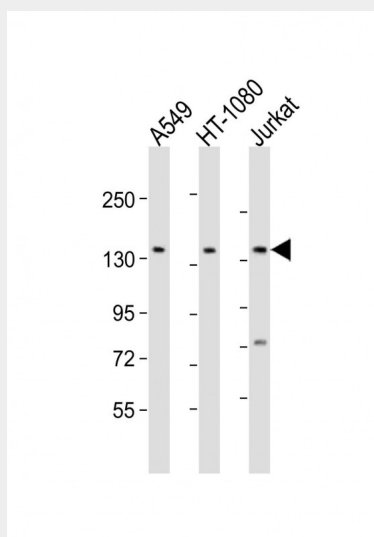
Nucleus. Cytoplasm. Cell junction, adherens junction. Cell membrane; Peripheral membrane protein; Cytoplasmic side. Note=Localization to the adherens junctions is alpha-catenin-dependent. Also localizes to F-actin bundles originating from adherens junctions and to microtubules (By similarity)

FMN1 Antibody (Center) - Protocols

Provided below are standard protocols that you may find useful for product applications.

- [Western Blot](#)
- [Blocking Peptides](#)
- [Dot Blot](#)
- [Immunohistochemistry](#)
- [Immunofluorescence](#)
- [Immunoprecipitation](#)
- [Flow Cytometry](#)
- [Cell Culture](#)

FMN1 Antibody (Center) - Images



All lanes : Anti-FMN1 Antibody (Center) at 1:2000 dilution Lane 1: A549 whole cell lysate Lane 2: HT-1080 whole cell lysate Lane 3: Jurkat whole cell lysate Lysates/proteins at 20 µg per lane. Secondary Goat Anti-Rabbit IgG, (H+L), Peroxidase conjugated at 1/10000 dilution. Predicted band size : 158 kDa Blocking/Dilution buffer: 5% NFD/MTBST.

FMN1 Antibody (Center) - Background

Plays a role in the formation of adherens junction and the polymerization of linear actin cables.

FMN1 Antibody (Center) - References

- Bechtel S.,et al.BMC Genomics 8:399-399(2007).
Zody M.C.,et al.Nature 440:671-675(2006).
Ota T.,et al.Nat. Genet. 36:40-45(2004).
Maas R.L.,et al.Am. J. Hum. Genet. 48:687-695(1991).
Katoh M.,et al.Int. J. Mol. Med. 14:121-126(2004).

