

SEMA4B Antibody (C-term)
Purified Rabbit Polyclonal Antibody (Pab)
Catalog # AP21616b

Specification

SEMA4B Antibody (C-term) - Product Information

Application	WB,E
Primary Accession	O9NPR2
Reactivity	Human
Host	Rabbit
Clonality	polyclonal
Isotype	Rabbit IgG
Calculated MW	92766

SEMA4B Antibody (C-term) - Additional Information

Gene ID 10509

Other Names

Semaphorin-4B, SEMA4B, KIAA1745, SEMAC

Target/Specificity

This SEMA4B antibody is generated from a rabbit immunized with a KLH conjugated synthetic peptide between 371-405 amino acids from the C-terminal region of human SEMA4B.

Dilution

WB~~1:2000

Format

Purified polyclonal antibody supplied in PBS with 0.09% (W/V) sodium azide. This antibody is purified through a protein A column, followed by peptide affinity purification.

Storage

Maintain refrigerated at 2-8°C for up to 2 weeks. For long term storage store at -20°C in small aliquots to prevent freeze-thaw cycles.

Precautions

SEMA4B Antibody (C-term) is for research use only and not for use in diagnostic or therapeutic procedures.

SEMA4B Antibody (C-term) - Protein Information

Name SEMA4B ([HGNC:10730](#))

Function Inhibits axonal extension by providing local signals to specify territories inaccessible for growing axons.

Cellular Location

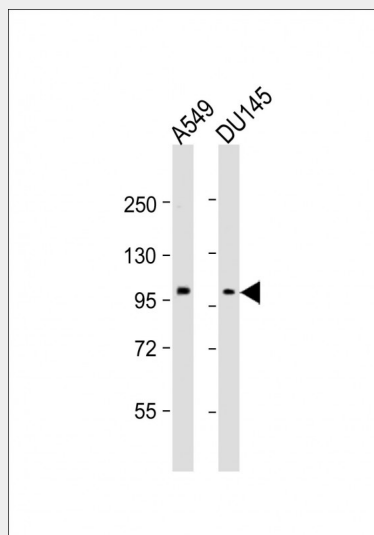
Membrane; Single-pass type I membrane protein.

SEMA4B Antibody (C-term) - Protocols

Provided below are standard protocols that you may find useful for product applications.

- [Western Blot](#)
- [Blocking Peptides](#)
- [Dot Blot](#)
- [Immunohistochemistry](#)
- [Immunofluorescence](#)
- [Immunoprecipitation](#)
- [Flow Cytometry](#)
- [Cell Culture](#)

SEMA4B Antibody (C-term) - Images



All lanes : Anti-SEMA4B Antibody (C-term) at 1:2000 dilution Lane 1: A549 whole cell lysates Lane 2: DU145 whole cell lysates Lysates/proteins at 20 µg per lane. Secondary Goat Anti-Rabbit IgG, (H+L), Peroxidase conjugated at 1/10000 dilution. Predicted band size : 92 kDa Blocking/Dilution buffer: 5% NFDM/TBST.

SEMA4B Antibody (C-term) - Background

Inhibits axonal extension by providing local signals to specify territories inaccessible for growing axons.

SEMA4B Antibody (C-term) - References

White J.R.,et al.Submitted (OCT-2003) to the EMBL/GenBank/DDBJ databases.
Nagase T.,et al.DNA Res. 7:347-355(2000).
Clark H.F.,et al.Genome Res. 13:2265-2270(2003).
Zody M.C.,et al.Nature 440:671-675(2006).
Zhang Z.,et al.Protein Sci. 13:2819-2824(2004).