

**CMA1 Antibody (N-Term)**  
**Purified Rabbit Polyclonal Antibody (Pab)**  
**Catalog # AP21604a**

**Specification**

---

**CMA1 Antibody (N-Term) - Product Information**

Application	WB,E
Primary Accession	<a href="#">P23946</a>
Reactivity	Human
Host	Rabbit
Clonality	polyclonal
Isotype	Rabbit IgG
Calculated MW	27325

**CMA1 Antibody (N-Term) - Additional Information**

**Gene ID** 1215

**Other Names**

Chymase, Alpha-chymase, Mast cell protease I, CMA1, CYH, CYM

**Target/Specificity**

This CMA1 antibody is generated from a rabbit immunized with a KLH conjugated synthetic peptide between 84-118 amino acids from human CMA1.

**Dilution**

WB~~1:2000

**Format**

Purified polyclonal antibody supplied in PBS with 0.09% (W/V) sodium azide. This antibody is purified through a protein A column, followed by peptide affinity purification.

**Storage**

Maintain refrigerated at 2-8°C for up to 2 weeks. For long term storage store at -20°C in small aliquots to prevent freeze-thaw cycles.

**Precautions**

CMA1 Antibody (N-Term) is for research use only and not for use in diagnostic or therapeutic procedures.

**CMA1 Antibody (N-Term) - Protein Information**

**Name** CMA1

**Synonyms** CYH, CYM

**Function** Major secreted protease of mast cells with suspected roles in vasoactive peptide generation, extracellular matrix degradation, and regulation of gland secretion.

### Cellular Location

Secreted. Cytoplasmic granule. Note=Mast cell granules

### Tissue Location

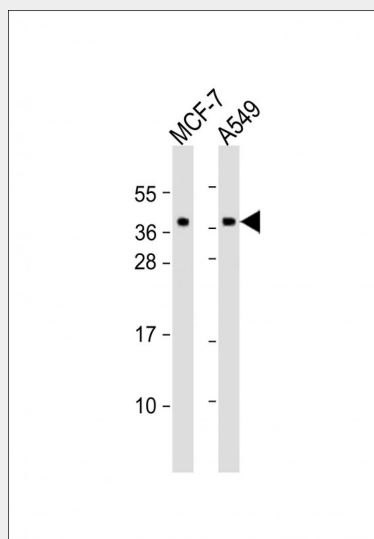
Mast cells in lung, heart, skin and placenta. Expressed in both normal skin and in urticaria pigmentosa lesions

### CMA1 Antibody (N-Term) - Protocols

Provided below are standard protocols that you may find useful for product applications.

- [Western Blot](#)
- [Blocking Peptides](#)
- [Dot Blot](#)
- [Immunohistochemistry](#)
- [Immunofluorescence](#)
- [Immunoprecipitation](#)
- [Flow Cytometry](#)
- [Cell Culture](#)

### CMA1 Antibody (N-Term) - Images



All lanes : Anti-CMA1 Antibody (N-Term) at 1:2000 dilution Lane 1: MCF-7 whole cell lysates Lane 2: A549 whole cell lysates Lysates/proteins at 20 µg per lane. Secondary Goat Anti-Rabbit IgG, (H+L), Peroxidase conjugated at 1/10000 dilution. Predicted band size : 27 kDa Blocking/Dilution buffer: 5% NFDM/TBST.

### CMA1 Antibody (N-Term) - Background

Major secreted protease of mast cells with suspected roles in vasoactive peptide generation, extracellular matrix degradation, and regulation of gland secretion.

### CMA1 Antibody (N-Term) - References

- Caughey G.H., et al. J. Biol. Chem. 266:12956-12963(1991).  
Urata H., et al. J. Biol. Chem. 266:17173-17179(1991).  
Schechter N.M., et al. J. Immunol. 152:4062-4069(1994).

Goshima N., et al. Nat. Methods 5:1011-1017(2008).  
Heilig R., et al. Nature 421:601-607(2003).