

DPEP2 Antibody (N-Term)
Purified Rabbit Polyclonal Antibody (Pab)
Catalog # AP21601a

Specification

DPEP2 Antibody (N-Term) - Product Information

Application	WB,E
Primary Accession	O9H4A9
Reactivity	Human
Host	Rabbit
Clonality	polyclonal
Isotype	Rabbit IgG
Calculated MW	53365

DPEP2 Antibody (N-Term) - Additional Information

Gene ID 64174

Other Names
Dipeptidase 2, DPEP2

Target/Specificity
This DPEP2 antibody is generated from a rabbit immunized with a KLH conjugated synthetic peptide between 138-171 amino acids from human DPEP2.

Dilution
WB~~1:2000

Format
Purified polyclonal antibody supplied in PBS with 0.09% (W/V) sodium azide. This antibody is purified through a protein A column, followed by peptide affinity purification.

Storage
Maintain refrigerated at 2-8°C for up to 2 weeks. For long term storage store at -20°C in small aliquots to prevent freeze-thaw cycles.

Precautions
DPEP2 Antibody (N-Term) is for research use only and not for use in diagnostic or therapeutic procedures.

DPEP2 Antibody (N-Term) - Protein Information

Name DPEP2

Function Dipeptidase that hydrolyzes leukotriene D4 (LTD4) into leukotriene E4 (LTE4) (PubMed:[32325220](#)). Hydrolyzes cystinyl-bis- glycine (PubMed:[32325220](#)).

Cellular Location

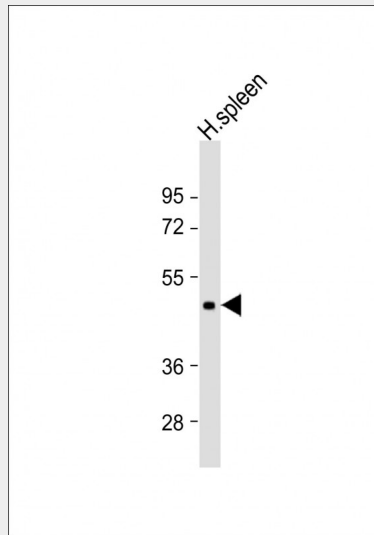
Membrane {ECO:0000250|UniProtKB:Q8C255}; Lipid- anchor, GPI-anchor
{ECO:0000250|UniProtKB:Q8C255}

DPEP2 Antibody (N-Term) - Protocols

Provided below are standard protocols that you may find useful for product applications.

- [Western Blot](#)
- [Blocking Peptides](#)
- [Dot Blot](#)
- [Immunohistochemistry](#)
- [Immunofluorescence](#)
- [Immunoprecipitation](#)
- [Flow Cytometry](#)
- [Cell Culture](#)

DPEP2 Antibody (N-Term) - Images



Anti-DPEP2 Antibody (N-Term) at 1:2000 dilution + human spleen lysates. Lysates/proteins at 20 µg per lane. Secondary Goat Anti-Rabbit IgG, (H+L), Peroxidase conjugated at 1/10000 dilution. Predicted band size : 53 kDa. Blocking/Dilution buffer: 5% NFD/MTBST.

DPEP2 Antibody (N-Term) - Background

Probable metalloprotease which hydrolyzes leukotriene D4 (LTD4) into leukotriene E4 (LTE4).

DPEP2 Antibody (N-Term) - References

- Chen J.M., et al. Submitted (OCT-2000) to the EMBL/GenBank/DDBJ databases.
Ota T., et al. Nat. Genet. 36:40-45(2004).
Martin J., et al. Nature 432:988-994(2004).
Mural R.J., et al. Submitted (JUL-2005) to the EMBL/GenBank/DDBJ databases.
Clark H.F., et al. Genome Res. 13:2265-2270(2003).