

SH3GL3 Antibody (C-term)
Purified Rabbit Polyclonal Antibody (Pab)
Catalog # AP21576b

Specification

SH3GL3 Antibody (C-term) - Product Information

Application	WB,E
Primary Accession	Q99963
Reactivity	Human, Mouse
Host	Rabbit
Clonality	polyclonal
Isotype	Rabbit IgG
Calculated MW	39285

SH3GL3 Antibody (C-term) - Additional Information

Gene ID 6457

Other Names

Endophilin-A3, EEN-B2, Endophilin-3, SH3 domain protein 2C, SH3 domain-containing GRB2-like protein 3, SH3GL3, CNSA3, SH3D2C

Target/Specificity

This SH3GL3 antibody is generated from a rabbit immunized with a KLH conjugated synthetic peptide between 290-325 amino acids from the C-terminal region of human SH3GL3.

Dilution

WB~~1:2000

Format

Purified polyclonal antibody supplied in PBS with 0.09% (W/V) sodium azide. This antibody is purified through a protein A column, followed by peptide affinity purification.

Storage

Maintain refrigerated at 2-8°C for up to 2 weeks. For long term storage store at -20°C in small aliquots to prevent freeze-thaw cycles.

Precautions

SH3GL3 Antibody (C-term) is for research use only and not for use in diagnostic or therapeutic procedures.

SH3GL3 Antibody (C-term) - Protein Information

Name SH3GL3

Synonyms CNSA3, SH3D2C

Function Implicated in endocytosis. May recruit other proteins to membranes with high curvature

(By similarity).

Cellular Location

Cytoplasm {ECO:0000250|UniProtKB:O35180}. Early endosome membrane {ECO:0000250|UniProtKB:O35180}; Peripheral membrane protein {ECO:0000250|UniProtKB:O35180}. Note=Associated with postsynaptic endosomes in hippocampal neurons. Associated with presynaptic endosomes in olfactory neurons {ECO:0000250|UniProtKB:O35180}

Tissue Location

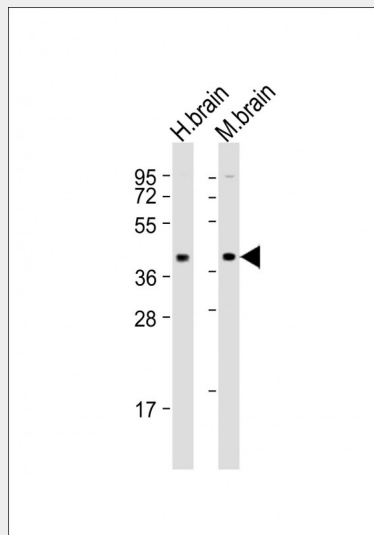
Brain and testis.

SH3GL3 Antibody (C-term) - Protocols

Provided below are standard protocols that you may find useful for product applications.

- [Western Blot](#)
- [Blocking Peptides](#)
- [Dot Blot](#)
- [Immunohistochemistry](#)
- [Immunofluorescence](#)
- [Immunoprecipitation](#)
- [Flow Cytometry](#)
- [Cell Culture](#)

SH3GL3 Antibody (C-term) - Images



All lanes : Anti-SH3GL3 Antibody (C-term) at 1:2000 dilution Lane 1: human brain lysates Lane 2: mouse brain lysates Lysates/proteins at 20 µg per lane. Secondary Goat Anti-Rabbit IgG, (H+L), Peroxidase conjugated at 1/10000 dilution. Predicted band size : 39 kDa Blocking/Dilution buffer: 5% NFD/MTBST.

SH3GL3 Antibody (C-term) - Background

Implicated in endocytosis. May recruit other proteins to membranes with high curvature (By similarity).

SH3GL3 Antibody (C-term) - References

Giachino C., et al. Genomics 41:427-434(1997).

So C.W., et al. Submitted (MAR-1998) to the EMBL/GenBank/DDBJ databases.

Sittler A., et al. Mol. Cell 2:427-436(1998).

Cestra G., et al. J. Biol. Chem. 274:32001-32007(1999).

Trevaskis J., et al. Endocrinology 146:3757-3764(2005).