

**PDHB Antibody (C-term)**  
**Purified Rabbit Polyclonal Antibody (Pab)**  
**Catalog # AP21567b**

**Specification**

---

**PDHB Antibody (C-term) - Product Information**

Application	WB,E
Primary Accession	<a href="#">P11177</a>
Reactivity	Human, Mouse, Rat
Host	Rabbit
Clonality	polyclonal
Isotype	Rabbit IgG
Calculated MW	39233

**PDHB Antibody (C-term) - Additional Information**

**Gene ID** 5162

**Other Names**

Pyruvate dehydrogenase E1 component subunit beta, mitochondrial, PDHE1-B, PDHB, PHE1B

**Target/Specificity**

This PDHB antibody is generated from a rabbit immunized with a KLH conjugated synthetic peptide between 324-356 amino acids from the C-terminal region of human PDHB.

**Dilution**

WB~~1:2000

**Format**

Purified polyclonal antibody supplied in PBS with 0.09% (W/V) sodium azide. This antibody is purified through a protein A column, followed by peptide affinity purification.

**Storage**

Maintain refrigerated at 2-8°C for up to 2 weeks. For long term storage store at -20°C in small aliquots to prevent freeze-thaw cycles.

**Precautions**

PDHB Antibody (C-term) is for research use only and not for use in diagnostic or therapeutic procedures.

**PDHB Antibody (C-term) - Protein Information**

**Name** PDHB

**Synonyms** PHE1B

**Function** The pyruvate dehydrogenase complex catalyzes the overall conversion of pyruvate to acetyl-CoA and CO(2), and thereby links the glycolytic pathway to the tricarboxylic cycle.

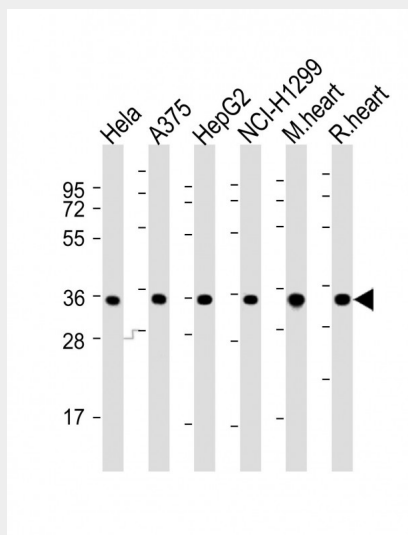
**Cellular Location**  
Mitochondrion matrix.

### PDHB Antibody (C-term) - Protocols

Provided below are standard protocols that you may find useful for product applications.

- [Western Blot](#)
- [Blocking Peptides](#)
- [Dot Blot](#)
- [Immunohistochemistry](#)
- [Immunofluorescence](#)
- [Immunoprecipitation](#)
- [Flow Cytometry](#)
- [Cell Culture](#)

### PDHB Antibody (C-term) - Images



All lanes : Anti-PDHB Antibody (C-term) at 1:2000 dilution Lane 1: HeLa whole cell lysates Lane 2: A375 whole cell lysates Lane 3: HepG2 whole cell lysates Lane 4: NCI-H1299 whole cell lysates Lane 5: mouse heart lysates Lane 6: rat heart lysates Lysates/proteins at 20 µg per lane. Secondary Goat Anti-Rabbit IgG, (H+L), Peroxidase conjugated at 1/10000 dilution. Predicted band size : 39 kDa Blocking/Dilution buffer: 5% NFD/MTBST.

### PDHB Antibody (C-term) - Background

The pyruvate dehydrogenase complex catalyzes the overall conversion of pyruvate to acetyl-CoA and CO<sub>2</sub>, and thereby links the glycolytic pathway to the tricarboxylic cycle.

### PDHB Antibody (C-term) - References

- Ho L.,et al.Gene 86:297-302(1990).  
Chun K.,et al.Eur. J. Biochem. 194:587-592(1990).  
Huh T.L.,et al.J. Biol. Chem. 265:13320-13326(1990).  
Koike K.,et al.Proc. Natl. Acad. Sci. U.S.A. 87:5594-5597(1990).  
Koike K.,et al.Proc. Natl. Acad. Sci. U.S.A. 85:41-45(1988).