

IP6K2 Antibody (Center)
Purified Rabbit Polyclonal Antibody (Pab)
Catalog # AP21553c

Specification

IP6K2 Antibody (Center) - Product Information

Application	WB,E
Primary Accession	O9UHH9
Reactivity	Mouse
Host	Rabbit
Clonality	polyclonal
Isotype	Rabbit IgG
Calculated MW	49186
Antigen Region	226-258

IP6K2 Antibody (Center) - Additional Information

Gene ID 51447

Other Names

Inositol hexakisphosphate kinase 2, InsP6 kinase 2, P(i)-uptake stimulator, PiUS, IP6K2, IHPK2

Target/Specificity

This IP6K2 antibody is generated from a rabbit immunized with a KLH conjugated synthetic peptide between 226-258 amino acids from the Central region of human IP6K2.

Dilution

WB~~1:2000

Format

Purified polyclonal antibody supplied in PBS with 0.09% (W/V) sodium azide. This antibody is purified through a protein A column, followed by peptide affinity purification.

Storage

Maintain refrigerated at 2-8°C for up to 2 weeks. For long term storage store at -20°C in small aliquots to prevent freeze-thaw cycles.

Precautions

IP6K2 Antibody (Center) is for research use only and not for use in diagnostic or therapeutic procedures.

IP6K2 Antibody (Center) - Protein Information

Name IP6K2 {ECO:0000303|PubMed:30624931}

Synonyms IHPK2

Function Converts inositol hexakisphosphate (InsP6) to diphosphoinositol pentakisphosphate

(InsP7/PP-InsP5).

Cellular Location

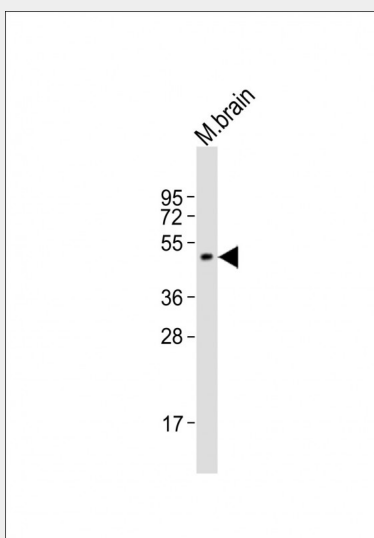
Nucleus.

IP6K2 Antibody (Center) - Protocols

Provided below are standard protocols that you may find useful for product applications.

- [Western Blot](#)
- [Blocking Peptides](#)
- [Dot Blot](#)
- [Immunohistochemistry](#)
- [Immunofluorescence](#)
- [Immunoprecipitation](#)
- [Flow Cytometry](#)
- [Cell Culture](#)

IP6K2 Antibody (Center) - Images



Anti-IP6K2 Antibody (Center) at 1:2000 dilution + mouse brain lysates Lysates/proteins at 20 µg per lane. Secondary Goat Anti-Rabbit IgG, (H+L), Peroxidase conjugated at 1/10000 dilution. Predicted band size : 49 kDa Blocking/Dilution buffer: 5% NFDN/TBST.

IP6K2 Antibody (Center) - Background

Converts inositol hexakisphosphate (InsP6) to diphosphoinositol pentakisphosphate (InsP7/PP-InsP5). Converts 1,3,4,5,6-pentakisphosphate (InsP5) to PP-InsP4.

IP6K2 Antibody (Center) - References

- Saiardi A., et al. *Curr. Biol.* 9:1323-1326(1999).
Zhou J., et al. Submitted (JUL-2000) to the EMBL/GenBank/DDBJ databases.
Ota T., et al. *Nat. Genet.* 36:40-45(2004).
Muzny D.M., et al. *Nature* 440:1194-1198(2006).
Bechtel S., et al. *BMC Genomics* 8:399-399(2007).