

**MMP23A Antibody (C-Term)**  
**Purified Rabbit Polyclonal Antibody (Pab)**  
**Catalog # AP21546b****Specification**

---

**MMP23A Antibody (C-Term) - Product Information**

Application	WB,E
Primary Accession	<a href="#">O75900</a>
Reactivity	Human
Host	Rabbit
Clonality	polyclonal
Isotype	Rabbit IgG
Calculated MW	43935
Antigen Region	328-362

**MMP23A Antibody (C-Term) - Additional Information****Gene ID** 8510**Other Names**

Matrix metalloproteinase-23, MMP-23, 3424-, Femalysin, MIFR-1, Matrix metalloproteinase-21, MMP-21, Matrix metalloproteinase-22, MMP-22, Matrix metalloproteinase-23, soluble form, MMP23A, MMP21

**Target/Specificity**

This MMP23A antibody is generated from a rabbit immunized with a KLH conjugated synthetic peptide between 328-362 amino acids from human MMP23A.

**Dilution**

WB~~1:1000

**Format**

Purified polyclonal antibody supplied in PBS with 0.09% (W/V) sodium azide. This antibody is purified through a protein A column, followed by peptide affinity purification.

**Storage**

Maintain refrigerated at 2-8°C for up to 2 weeks. For long term storage store at -20°C in small aliquots to prevent freeze-thaw cycles.

**Precautions**

MMP23A Antibody (C-Term) is for research use only and not for use in diagnostic or therapeutic procedures.

**MMP23A Antibody (C-Term) - Protein Information****Name** MMP23B**Synonyms** MMP21, MMP22

**Function** Protease. May regulate the surface expression of some potassium channels by retaining them in the endoplasmic reticulum (By similarity).

**Cellular Location**

Endoplasmic reticulum membrane; Single-pass type II membrane protein. Membrane; Single-pass type II membrane protein. Note=A secreted form produced by proteolytic cleavage may also exist.

**Tissue Location**

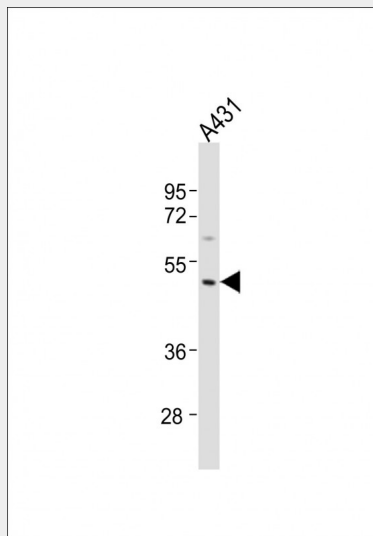
Predominantly expressed in ovary, testis and prostate.

**MMP23A Antibody (C-Term) - Protocols**

Provided below are standard protocols that you may find useful for product applications.

- [Western Blot](#)
- [Blocking Peptides](#)
- [Dot Blot](#)
- [Immunohistochemistry](#)
- [Immunofluorescence](#)
- [Immunoprecipitation](#)
- [Flow Cytometry](#)
- [Cell Culture](#)

**MMP23A Antibody (C-Term) - Images**



Anti-MMP23A Antibody (C-Term) at 1:1000 dilution + A431 whole cell lysates Lysates/proteins at 20 µg per lane. Secondary Goat Anti-Rabbit IgG, (H+L), Peroxidase conjugated at 1/10000 dilution Predicted band size : 44 kDa Blocking/Dilution buffer: 5% NFD/MTBST.

**MMP23A Antibody (C-Term) - Background**

Protease. May regulate the surface expression of some potassium channels by retaining them in the endoplasmic reticulum (By similarity).

**MMP23A Antibody (C-Term) - References**

Gururajan R., et al. Genomics 52:101-106(1998).

Velasco G., et al. J. Biol. Chem. 274:4570-4576(1999).  
Ohnishi J., et al. Mol. Endocrinol. 15:747-764(2001).  
Gregory S.G., et al. Nature 441:315-321(2006).